

Texas

NAEP proficiency level and percentile data as well as results from state assessments demonstrate the existence of substantial Excellence Gaps for African-American, Hispanic, and Free and Reduced Lunch Eligible students. White students had higher average AP scores than African-American and Hispanic students on AP tests and were more likely to make a “5” on an AP exam or take an AP exam.

According to NAEP proficiency data, the percentage of students at the advanced level increased in Math for all subgroups and in Reading for non-FARM students in both grades and white students in Grade 4, with a decline for Hispanic students in Grade 8. Achievement gaps generally increased except for the gap between white and African-American students in Grade 8 Reading.

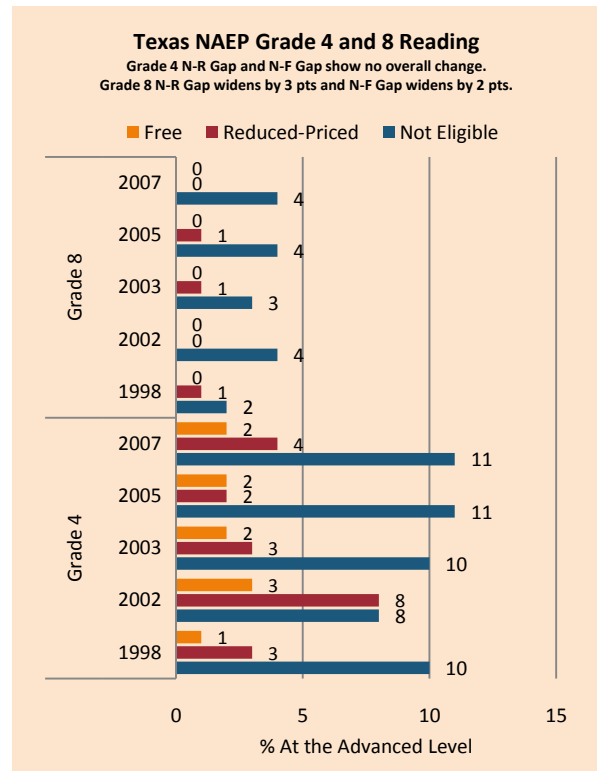
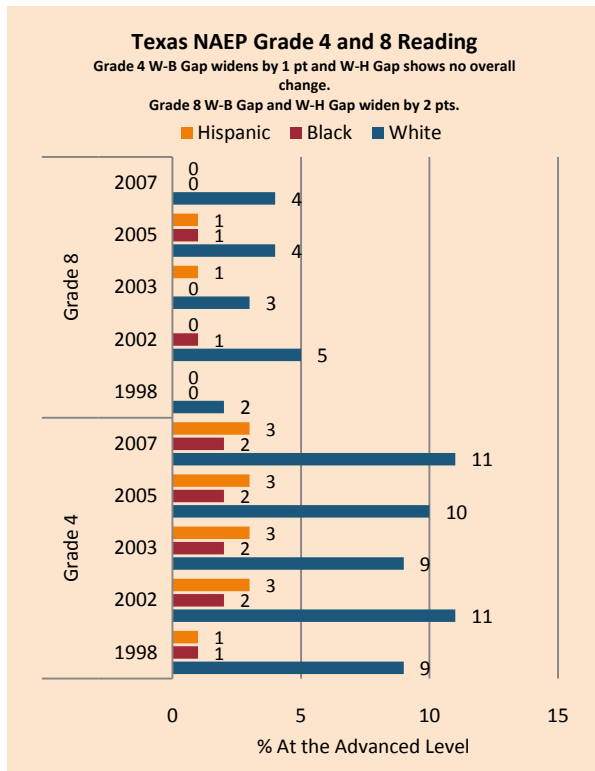
NAEP scale scores at the 90th percentile increased for most subgroups in Math, accompanied by declines in achievement gaps excepting the Hispanic students decline in performance in Grade 4. Although generally positive, improvement was slower in Reading with achievement gaps narrowing for Hispanic students in Grade 4 and FARM students in Grade 8 and expanding for African-Americans in both grades and FARM students in Grade 8.

The percentage of students performing at the advanced level on state assessments increased across grade levels in both Reading and Math across ethnic and income subgroups. With the sole exception of Hispanic students in Grade 4 Reading, who kept pace with white students, the share of high-income and white students registering as top performers grew more quickly than did African-American, Hispanic, or low-income students.

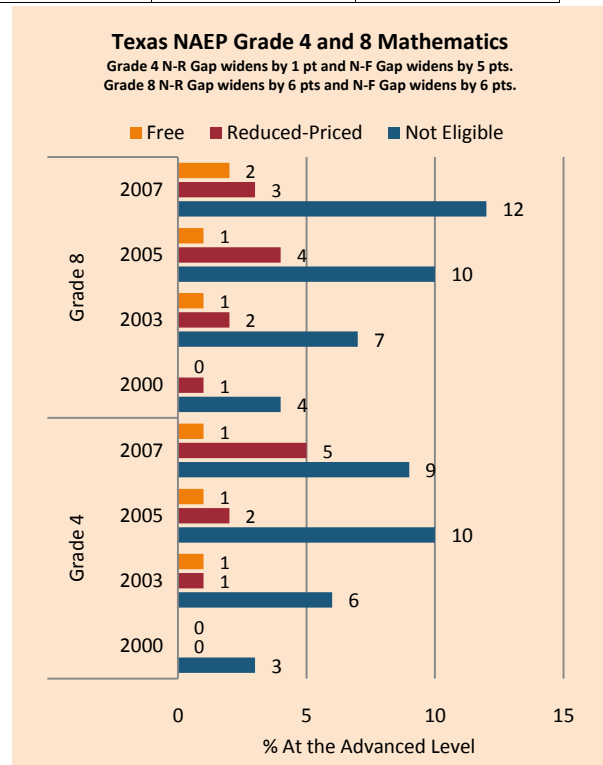
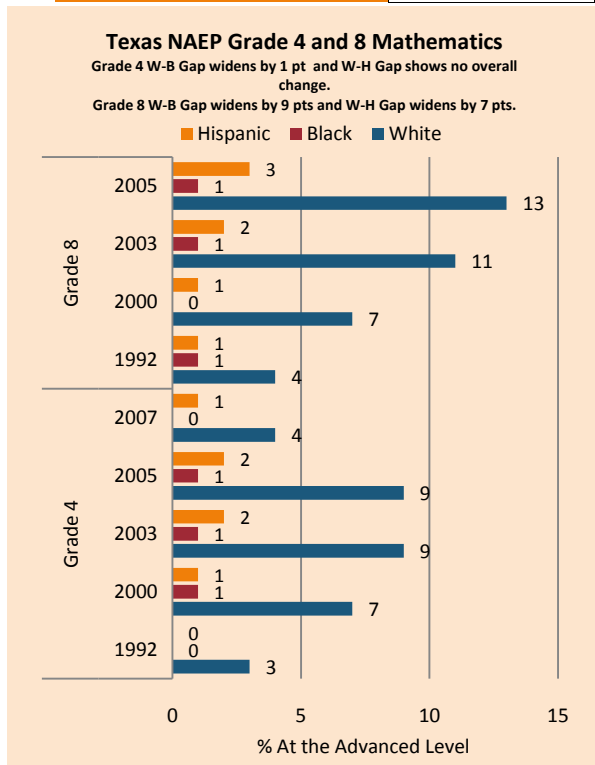
On the AP exams, there were increases in achievement gaps in mean AP scores, the percentage of tests scoring a 5 (weighted), and the number of tests taken. There was also a decrease in the gap between white and Hispanic students in the percentage of tests scoring a 5 (unweighted).

Summary of State Policy as of 2006-2007

| State | Mandate Identify | Mandate Services | Gifted Identified | Identified by Gender | Identified by Ethnicity | GT Funding | GT Funding per Identified |
|-------|------------------|------------------|-------------------|----------------------|-------------------------|--------------|---------------------------|
| Texas | yes | yes | 343,158 | yes | yes | \$77,191,366 | \$224.94 |



| NAEP Scores at the 90 th Percentile | | | | |
|--|------|------|----------|----------|
| Subject, Grade, Group | 2003 | 2007 | 2003 Gap | 2007 Gap |
| Math 4 Male | 272 | 275 | 4 | 2 |
| Math 4 Female | 267 | 273 | | |
| Math 8 Male | 321 | 329 | 5 | 4 |
| Math 8 Female | 316 | 324 | | |
| Reading 4 Male | 256 | 258 | 5 | 5 |
| Reading 4 Female | 261 | 263 | | |
| Reading 8 Male | 295 | 296 | 10 | 10 |
| Reading 8 Female | 306 | 305 | | |
| Math 4 ELL | 250 | 259 | 22 | 16 |
| Math 4 NonELL | 271 | 275 | | |
| Math 8 ELL | 280 | 289 | 39 | 39 |
| Math 8 NonELL | 320 | 328 | | |
| Reading 4 ELL | 231 | 237 | 30 | 25 |
| Reading 4 NonELL | 261 | 262 | | |
| Reading 8 ELL | 257 | 255 | 44 | 48 |
| Reading 8 NonELL | 301 | 302 | | |
| Math 4 FARM | 259 | 264 | 18 | 17 |
| Math 4 NonFARM | 277 | 281 | | |
| Math 8 FARM | 302 | 311 | 25 | 24 |



| | | | | |
|--------------------|-----|-----|----|----|
| Math 8 NonFARM | 327 | 336 | | |
| Reading 4 FARM | 247 | 247 | 20 | 22 |
| Reading 4 NonFARM | 267 | 270 | | |
| Reading 8 FARM | 284 | 287 | 24 | 22 |
| Reading 8 NonFARM | 308 | 310 | | |
| Math 4 White | 268 | 271 | | |
| Math 4 Black | 242 | 248 | 26 | 23 |
| Math 4 Hispanic | 256 | 254 | 12 | 17 |
| Math 8 White | 328 | 336 | | |
| Math 8 Black | 296 | 307 | 32 | 29 |
| Math 8 Hispanic | 304 | 314 | 24 | 22 |
| Reading 4 White | 267 | 269 | | |
| Reading 4 Black | 246 | 247 | 21 | 22 |
| Reading 4 Hispanic | 248 | 251 | 19 | 19 |
| Reading 8 White | 309 | 311 | | |
| Reading 8 Black | 287 | 286 | 22 | 25 |
| Reading 8 Hispanic | 287 | 289 | 23 | 22 |

| Texas Assessment of Knowledge and Skills Grade 4, 7, 10 English/Language Arts Excellence Achievement Gaps on Race | | | | | | | | | | | | | | | |
|---|---------|----|----|-----------|-----------|---------|----|----|-----------|-----------|----------|---|----|-----------|-----------|
| % At the Advanced Level | Grade 4 | | | | | Grade 7 | | | | | Grade 10 | | | | |
| | W | B | H | W-B | W-H | W | B | H | W-B | W-H | W | B | H | W-B | W-H |
| 2003 | 27 | 8 | 9 | 19 | 18 | 22 | 5 | 6 | 17 | 16 | 8 | 2 | 2 | 6 | 6 |
| 2004 | 36 | 14 | 16 | 22 | 20 | 29 | 8 | 11 | 21 | 18 | 6 | 1 | 1 | 5 | 5 |
| 2005 | 33 | 13 | 16 | 20 | 17 | 33 | 11 | 11 | 22 | 22 | 8 | 2 | 2 | 6 | 6 |
| 2006 | 30 | 11 | 13 | 19 | 17 | 32 | 11 | 13 | 21 | 19 | 19 | 6 | 7 | 13 | 12 |
| 2007 | 41 | 20 | 21 | 21 | 20 | 38 | 15 | 15 | 23 | 23 | 17 | 5 | 6 | 12 | 11 |
| 2008 | 36 | 15 | 17 | 21 | 19 | 43 | 20 | 21 | 23 | 22 | 25 | 9 | 11 | 16 | 14 |

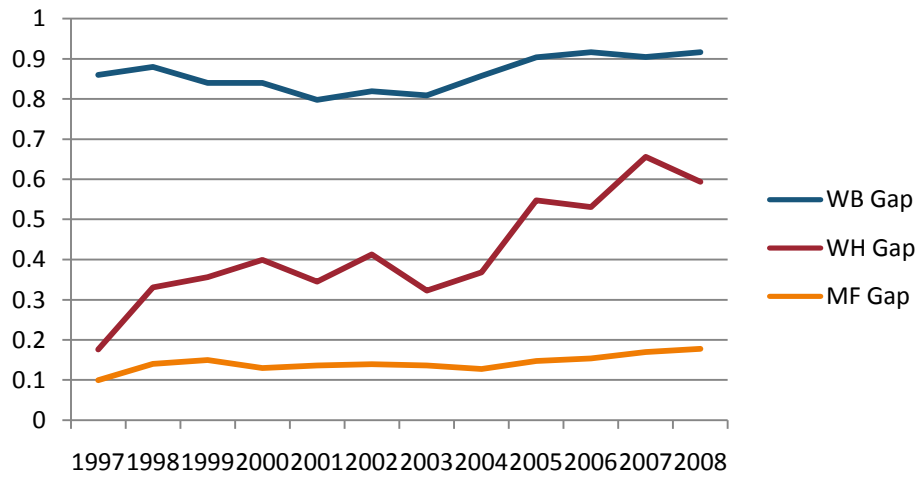
| Texas Assessment of Knowledge and Skills Grade 4, 7, 10 Mathematics Excellence Achievement Gaps on Race | | | | | | | | | | | | | | | |
|---|---------|----|----|-----------|-----------|---------|---|---|-----------|-----------|----------|---|---|-----------|-----------|
| % At the Advanced Level | Grade 4 | | | | | Grade 7 | | | | | Grade 10 | | | | |
| | W | B | H | W-B | W-H | W | B | H | W-B | W-H | W | B | H | W-B | W-H |
| 2003 | 24 | 7 | 9 | 17 | 15 | 11 | 2 | 3 | 9 | 8 | 11 | 2 | 3 | 9 | 8 |
| 2004 | 30 | 10 | 15 | 20 | 15 | 11 | 2 | 3 | 9 | 8 | 13 | 2 | 3 | 11 | 10 |
| 2005 | 39 | 14 | 21 | 25 | 18 | 18 | 4 | 6 | 14 | 12 | 14 | 3 | 4 | 11 | 10 |

| | | | | | | | | | | | | | | | |
|-------------|----|----|----|-----------|-----------|----|---|----|-----------|-----------|----|---|----|-----------|-----------|
| 2006 | 42 | 17 | 24 | 25 | 18 | 20 | 5 | 8 | 15 | 12 | 18 | 3 | 6 | 15 | 12 |
| 2007 | 45 | 19 | 26 | 26 | 19 | 25 | 8 | 11 | 17 | 14 | 22 | 4 | 8 | 18 | 14 |
| 2008 | 40 | 18 | 25 | 22 | 15 | 27 | 8 | 12 | 19 | 15 | 23 | 6 | 10 | 17 | 13 |

| Texas Assessment of Knowledge and Skills Grade 4, 7, 10 English/Language Arts Excellence Achievement Gaps on SES | | | | | | | | | |
|--|---------|----|-----------|---------|----|-----------|----------|---|-----------|
| % At the Advanced Level | Grade 4 | | | Grade 7 | | | Grade 10 | | |
| | N | P | Gap | N | P | Gap | N | P | Gap |
| 2003 | 26 | 8 | 18 | 20 | 5 | 15 | 7 | 2 | 5 |
| 2004 | 36 | 14 | 22 | 28 | 10 | 18 | 5 | 1 | 4 |
| 2005 | 34 | 14 | 20 | 31 | 11 | 20 | 7 | 2 | 5 |
| 2006 | 30 | 11 | 19 | 31 | 12 | 19 | 17 | 6 | 11 |
| 2007 | 42 | 19 | 23 | 37 | 14 | 23 | 16 | 5 | 11 |
| 2008 | 37 | 15 | 22 | 42 | 18 | 24 | 24 | 9 | 15 |

| Texas Assessment of Knowledge and Skills Grade 4, 7, 10 Mathematics Excellence Achievement Gaps on SES | | | | | | | | | |
|--|---------|----|-----------|---------|----|-----------|----------|---|-----------|
| % At the Advanced Level | Grade 4 | | | Grade 7 | | | Grade 10 | | |
| | N | P | Gap | N | P | Gap | N | P | Gap |
| 2003 | 24 | 8 | 16 | 11 | 2 | 9 | 10 | 2 | 8 |
| 2004 | 30 | 13 | 17 | 11 | 3 | 8 | 11 | 3 | 8 |
| 2005 | 40 | 19 | 21 | 18 | 5 | 13 | 13 | 4 | 9 |
| 2006 | 43 | 21 | 22 | 20 | 6 | 14 | 17 | 5 | 12 |
| 2007 | 46 | 24 | 22 | 25 | 10 | 15 | 20 | 7 | 13 |
| 2008 | 41 | 22 | 19 | 28 | 10 | 18 | 22 | 9 | 13 |

Gaps in Mean AP Scores



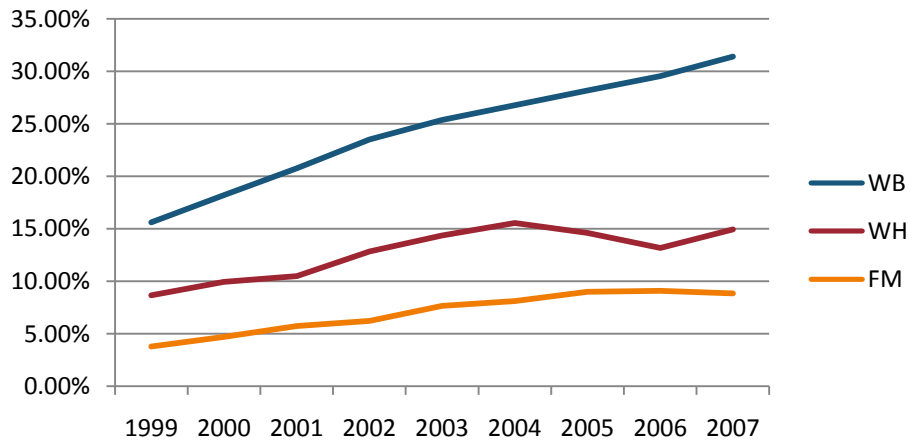
Gaps in the Percentage of Tests Taken Receiving a "5" on the AP Exam by Subgroup*

| | 1997 | 1998 | 1999 | 2000 | 2001 | 2002 | 2003 | 2004 | 2005 | 2006 | 2007 | 2008 |
|----------|--------|--------|--------|--------|--------|--------|--------|--------|--------|--------|--------|--------|
| Male | 14.53% | 13.84% | 13.55% | 13.06% | 11.95% | 12.43% | 12.28% | 12.06% | 10.73% | 11.37% | 10.96% | 11.34% |
| Female | 12.62% | 11.01% | 10.73% | 14.34% | 9.54% | 9.87% | 10.12% | 9.78% | 8.45% | 8.61% | 7.99% | 8.34% |
| White | 11.68% | 10.80% | 11.07% | 10.68% | 9.59% | 10.45% | 9.71% | 10.08% | 9.93% | 10.12% | 10.29% | 10.48% |
| Black | 2.85% | 2.50% | 1.92% | 2.37% | 2.20% | 2.70% | 2.14% | 2.50% | 2.01% | 2.01% | 2.24% | 2.14% |
| Hispanic | 18.56% | 15.62% | 13.34% | 14.82% | 12.67% | 11.35% | 13.91% | 11.58% | 7.35% | 8.16% | 6.14% | 6.91% |
| M-F Gap | 1.90% | 2.83% | 2.81% | -1.27% | 2.41% | 2.55% | 2.16% | 2.28% | 2.28% | 2.77% | 2.96% | 3.00% |
| W-B Gap | 8.83% | 8.29% | 9.15% | 8.31% | 7.39% | 7.75% | 7.57% | 7.59% | 7.92% | 8.12% | 8.06% | 8.34% |
| W-H Gap | -6.88% | -4.83% | -2.27% | -4.14% | -3.07% | -0.90% | -4.20% | -1.49% | 2.59% | 1.96% | 4.15% | 3.56% |

Gaps in the Percentage of Tests Taken Receiving a "5" on the AP Exam by Subgroup Weighted by Enrollment*

| | 1999 | 2000 | 2001 | 2002 | 2003 | 2004 | 2005 | 2006 | 2007 |
|----------|-------|--------|-------|-------|--------|--------|-------|-------|-------|
| Male | 2.39% | 2.74% | 2.87% | 3.29% | 3.54% | 3.83% | 3.72% | 4.22% | 4.39% |
| Female | 2.30% | 3.68% | 2.84% | 3.23% | 3.69% | 3.90% | 3.69% | 3.97% | 3.91% |
| White | 2.38% | 2.79% | 2.86% | 3.50% | 3.62% | 4.11% | 4.33% | 4.55% | 5.08% |
| Black | 0.11% | 0.19% | 0.20% | 0.27% | 0.25% | 0.35% | 0.31% | 0.31% | 0.40% |
| Hispanic | 1.71% | 2.40% | 2.44% | 2.34% | 3.19% | 2.92% | 2.13% | 2.60% | 2.12% |
| M-F Gap | 0.09% | -0.94% | 0.03% | 0.06% | -0.15% | -0.07% | 0.03% | 0.24% | 0.48% |
| W-B Gap | 2.27% | 2.61% | 2.66% | 3.23% | 3.36% | 3.76% | 4.02% | 4.24% | 4.68% |
| W-H Gap | 0.67% | 0.39% | 0.42% | 1.15% | 0.43% | 1.19% | 2.20% | 1.96% | 2.97% |

Gaps in the Number of Tests Taken Weighted by Subgroup Enrollment*



*The unit of analysis for AP data is the test, not the student. AP test results are presented as the number of scores received by members of each subgroup, NOT the number of students who received a given score on any exam. These numbers are not equivalent because some students take multiple tests.