

Rhode Island

NAEP proficiency level and percentile data as well as results from state assessments demonstrate the existence of substantial Excellence Gaps for African-American, Hispanic, and Free and Reduced Lunch Eligible students on most exams. White students had higher average AP scores than African-American and Hispanic students on AP tests and were more likely to make a “5” on an AP exam or take an AP exam.

According to NAEP proficiency data, the percentage of students at the advanced level increased among non-FARM students in Math, white students in Math Grade 8 and Reading Grade 4, African-American students in Math Grade 4, and Hispanic students in Math Grade 8. Achievement gaps increased in Math Grade 8, as they did for FARM students in Math Grade 4, FARM and Hispanic students in Reading Grade 8, and minority students in Reading Grade 4. African American students narrowed the gap with white students in Math Grade 4.

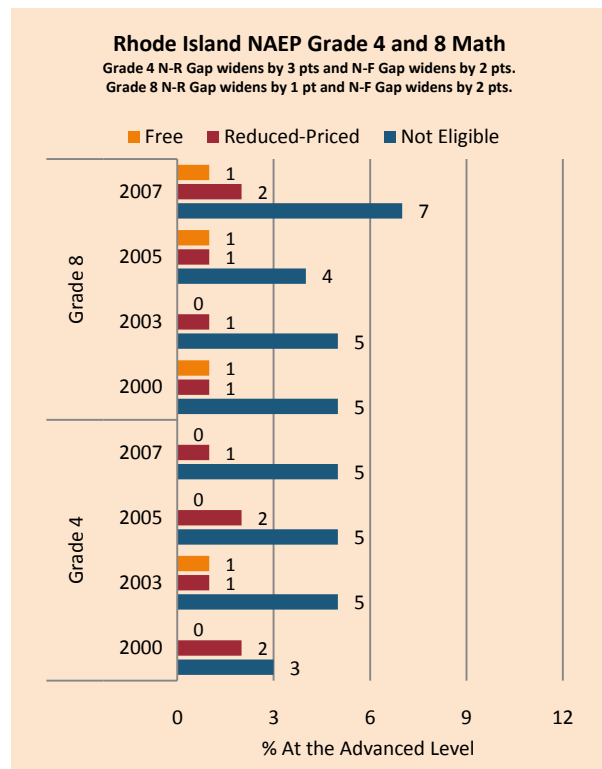
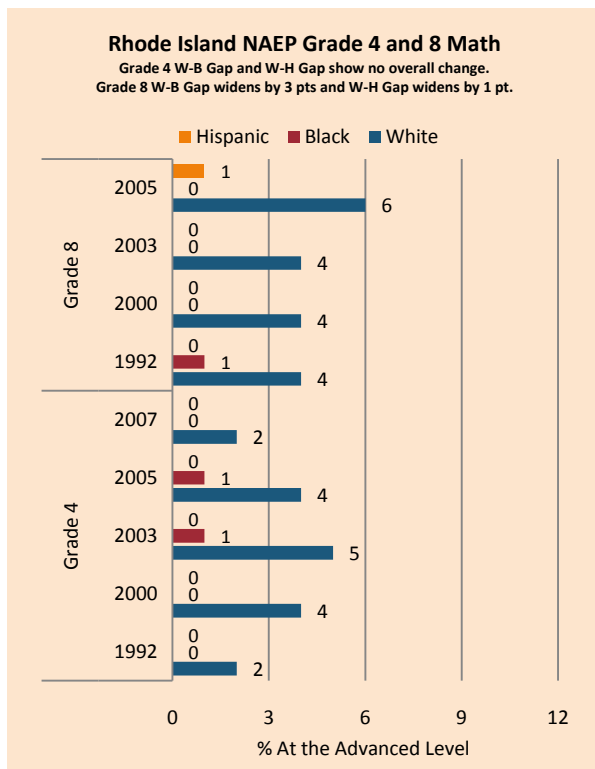
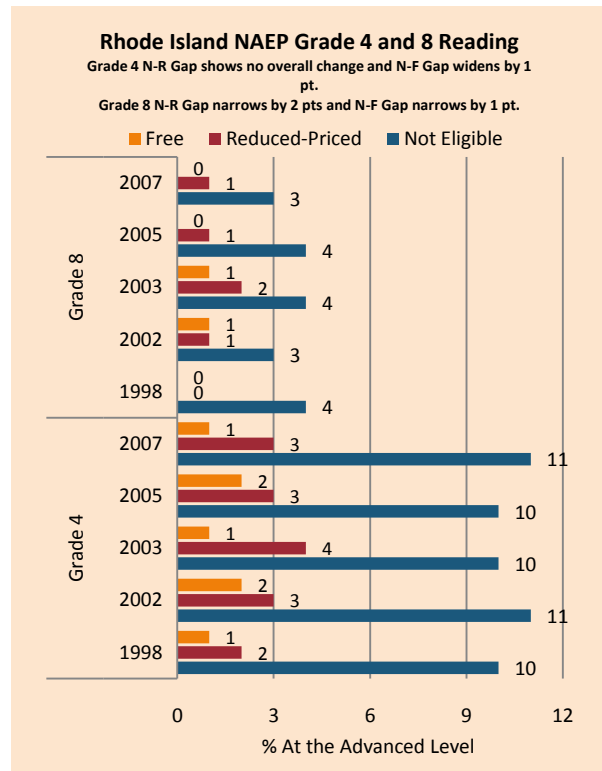
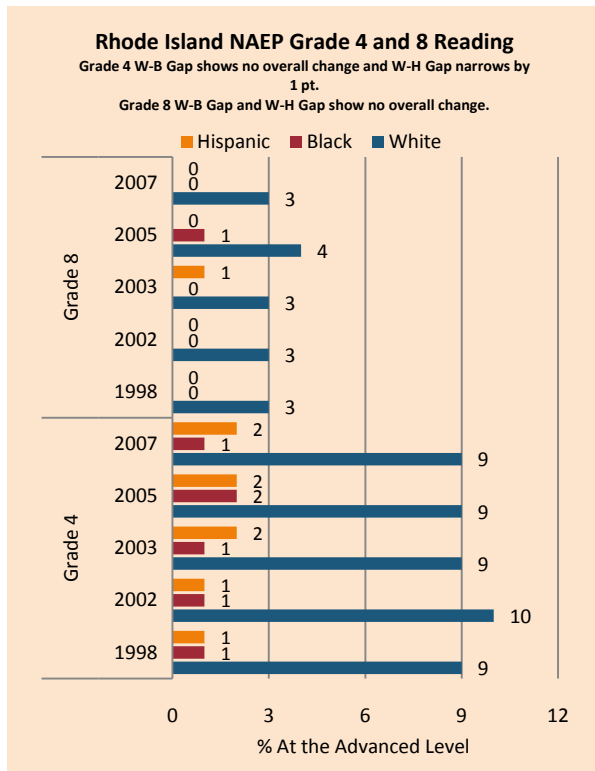
NAEP scale scores at the 90th percentile increased across subgroups in Math, with the Excellence Gap generally narrowing (except for FARM students in Grade 8). Performance was either flat or declining in Reading, with an expansion of achievement gaps for African-American students and for FARM and Hispanic students only in Grade 8.

The proportion of students reaching the advanced level on state assessments has generally increased in Grade 4 and 7 in both Math and Reading across ethnic and income subgroups. There has been a slight change in achievement gaps, with several upward trends for Hispanic students and low-income students and smaller gaps for African-American students.

On the AP exam, there were increases in achievement gaps as measured by the percentage of tests receiving a score of 5 (weighted) and the number of tests taken. The gap between white and African-American students also increased in mean AP scores and the percentage of exams receiving a 5 (unweighted). There was also a decrease in the gap between white and Hispanic students in the percentage of exams receiving a 5.

Summary of State Policy as of 2006-2007

State	Mandate Identify	Mandate Services	Gifted Identified	Identified by Gender	Identified by Ethnicity	GT Funding	GT Funding per Identified
Rhode Island	no	no	Not collected	no	no	\$0	N/A



NAEP Scores at the 90 th Percentile				
Subject, Grade, Group	2003	2007	2003 Gap	2007 Gap
Math 4 Male	269	271	3	1
Math 4 Female	266	269		
Math 8 Male	318	323	4	3
Math 8 Female	314	320		
Reading 4 Male	258	259	7	7
Reading 4 Female	264	266		
Reading 8 Male	299	299	9	6
Reading 8 Female	308	305		
Math 4 ELL	230	248	39	23
Math 4 NonELL	269	271		
Math 8 ELL	268		50	
Math 8 NonELL	317	322		
Reading 4 ELL	222	224	41	40
Reading 4 NonELL	262	263		
Reading 8 ELL	259	249	45	53
Reading 8 NonELL	304	302		
Math 4 FARM	254	257	20	18
Math 4 NonFARM	274	275		
Math 8 FARM	296	299	27	28
Math 8 NonFARM	322	327		
Reading 4 FARM	243	244	25	25
Reading 4 NonFARM	268	269		
Reading 8 FARM	289	284	19	24
Reading 8 NonFARM	308	307		
Math 4 White	274	280		
Math 4 Black	246	258	29	22
Math 4 Hispanic	252	267	22	13
Math 8 White	320	326		
Math 8 Black	288	297	32	29
Math 8 Hispanic	285	293	34	33
Reading 4 White	266	267		
Reading 4 Black	241	238	24	29
Reading 4 Hispanic	240	242	25	25
Reading 8 White	307	307		
Reading 8 Black	288	281	19	25
Reading 8 Hispanic	278	274	29	33

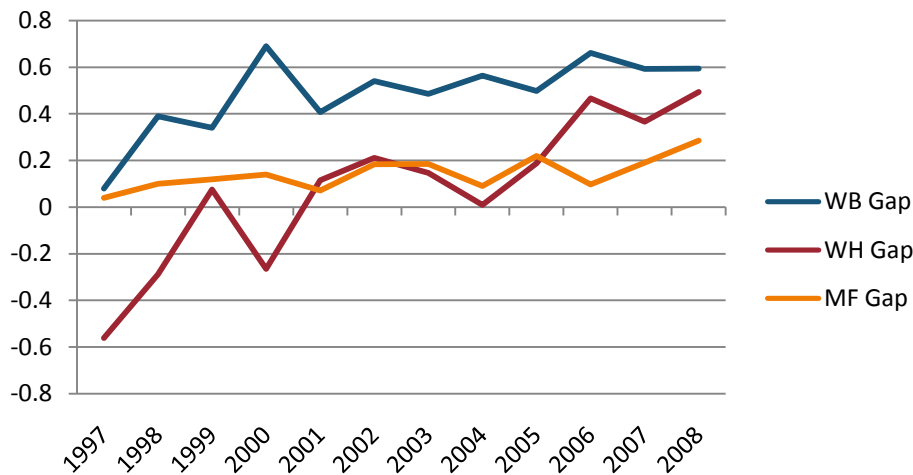
RI – New England Common Assessment Program (NECAP) Grade 4, 7, 11 English/Language Arts Excellence Achievement Gaps on Race															
% At the Advanced Level	Grade 4					Grade 7					Grade 11				
	W	B	H	W-B	W-H	W	B	H	W-B	W-H	W	B	H	W-B	W-H
2006	16	4	3	12	13	13	1	2	12	11	Data is not available.				
2007	18	5	5	13	13	12	3	2	9	10					
2008	20	8	5	12	15	15	5	4	10	11	20	5	4	15	16

RI – New England Common Assessment Program (NECAP) Grade 4, 7, 11 Mathematics Excellence Achievement Gaps on Race															
% At the Advanced Level	Grade 4					Grade 7					Grade 11				
	W	B	H	W-B	W-H	W	B	H	W-B	W-H	W	B	H	W-B	W-H
2006	15	3	3	12	12	13	1	2	12	11	Data is not available.				
2007	13	3	2	10	11	16	3	2	13	14					
2008	15	5	2	10	13	15	3	3	12	12	1	0	0	1	1

RI – New England Common Assessment Program (NECAP) Grade 4, 7, 11 English/Language Arts Excellence Achievement Gaps on SES										
% At the Advanced Level	Grade 4			Grade 7			Grade 11			
	N	P	Gap	N	P	Gap	N	P	Gap	
2006	19	4	15	14	2	12	Data is not available.			
2007	20	6	14	13	3	10				
2008	23	7	16	20	5	15	21	6	15	

RI – New England Common Assessment Program (NECAP) Grade 4, 7, 11 Mathematics Excellence Achievement Gaps on SES										
% At the Advanced Level	Grade 4			Grade 7			Grade 11			
	N	P	Gap	N	P	Gap	N	P	Gap	
2006	17	4	13	15	2	13	Data is not available.			
2007	14	3	11	17	4	13				
2008	18	4	14	17	4	13	1	0	1	

Gaps in Mean AP Scores



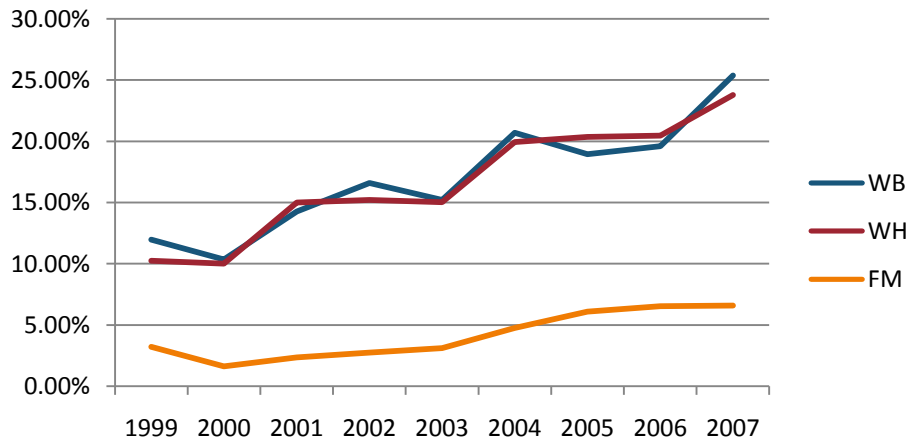
Gaps in the Percentage of Tests Taken Receiving a "5" on the AP Exam by Subgroup*

	1997	1998	1999	2000	2001	2002	2003	2004	2005	2006	2007	2008
Male	11.95%	14.61%	15.66%	16.21%	13.45%	15.12%	14.97%	15.93%	14.62%	16.54%	17.51%	19.36%
Female	11.84%	10.77%	13.30%	13.35%	10.42%	10.62%	10.49%	11.17%	10.46%	12.56%	12.86%	12.56%
White	10.66%	12.13%	13.69%	14.12%	11.95%	12.16%	12.30%	12.85%	12.42%	14.27%	14.61%	15.09%
Black	6.06%	3.03%	5.00%	1.82%	8.70%	5.19%	2.35%	11.86%	6.90%	4.76%	3.49%	9.38%
Hispanic	36.71%	23.66%	19.10%	25.58%	13.95%	15.91%	20.63%	13.46%	11.85%	9.14%	12.08%	9.42%
M-F Gap	0.12%	3.84%	2.35%	2.85%	3.03%	4.50%	4.48%	4.76%	4.16%	3.99%	4.64%	6.80%
W-B Gap	4.60%	9.10%	8.69%	12.30%	3.26%	6.96%	9.94%	0.99%	5.53%	9.51%	11.12%	5.72%
W-H Gap	-26.05%	-11.53%	-5.41%	-11.46%	-2.00%	-3.75%	-8.34%	-0.61%	0.57%	5.13%	2.54%	5.67%

Gaps in the Percentage of Tests Taken Receiving a "5" on the AP Exam by Subgroup Weighted by Enrollment*

	1999	2000	2001	2002	2003	2004	2005	2006	2007
Male	2.40%	2.84%	2.39%	2.97%	2.72%	3.07%	2.99%	3.67%	4.20%
Female	2.47%	2.55%	2.10%	2.38%	2.23%	2.68%	2.78%	3.61%	3.93%
White	2.13%	2.13%	2.35%	2.65%	2.55%	3.10%	3.12%	3.77%	4.36%
Black	0.18%	0.09%	0.47%	0.27%	0.13%	0.41%	0.42%	0.33%	0.16%
Hispanic	1.01%	1.30%	0.65%	1.04%	1.17%	0.56%	0.56%	0.54%	0.73%
M-F Gap	-0.07%	0.28%	0.29%	0.59%	0.49%	0.38%	0.21%	0.06%	0.26%
W-B Gap	1.95%	2.04%	1.88%	2.38%	2.42%	2.69%	2.69%	3.45%	4.20%
W-H Gap	1.12%	0.83%	1.70%	1.60%	1.37%	2.54%	2.56%	3.23%	3.63%

Gaps in the Number of Tests Taken Weighted by Subgroup Enrollment*



*The unit of analysis for AP data is the test, not the student. AP test results are presented as the number of scores received by members of each subgroup, NOT the number of students who received a given score on any exam. These numbers are not equivalent because some students take multiple tests.