

Ohio

NAEP proficiency level and percentile data as well as results from state assessments demonstrate the existence of substantial Excellence Gaps for African-American, Hispanic, and Free and Reduced Lunch Eligible students on most exams. White students had higher average AP scores than African-American students on AP tests and were more likely to make a “5” on an AP exam or take an AP exam while Hispanic performance was more competitive. Ohio state assessments have fairly rigorous standards for advanced status.

According to NAEP proficiency data, the percentage of students at the advanced level increased in Math for non-FARM and white students, with additional improvements among FARM students in Grade 8 and among African-American students in Grade 4. Declines among minority and FARM students in Reading Grade 4 and African-American students in Grade 8 led to increases in the Excellence Gap.

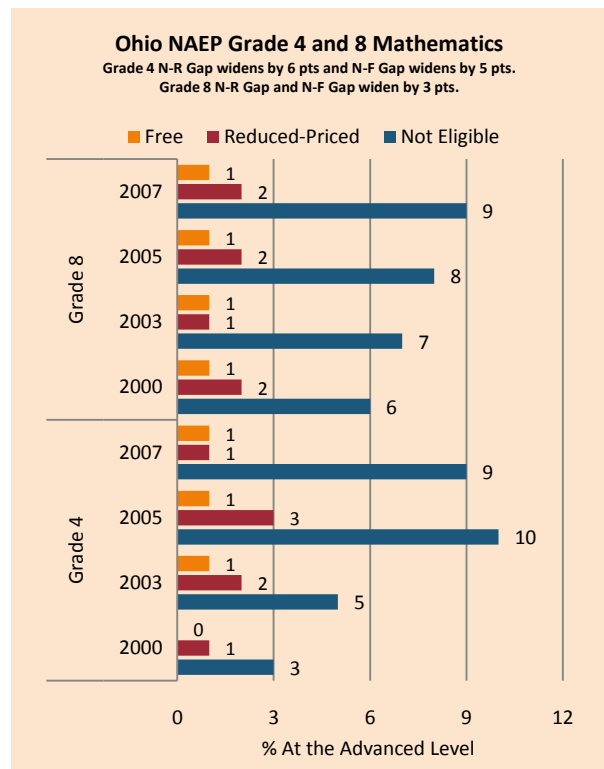
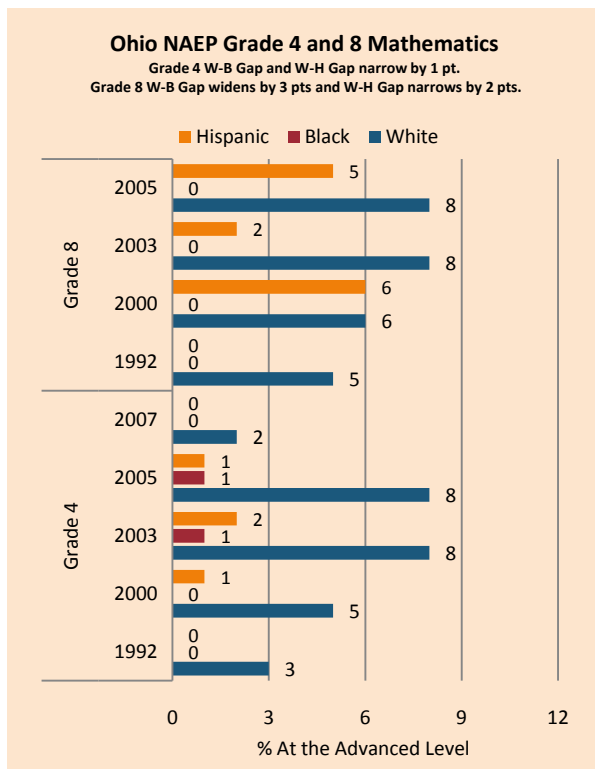
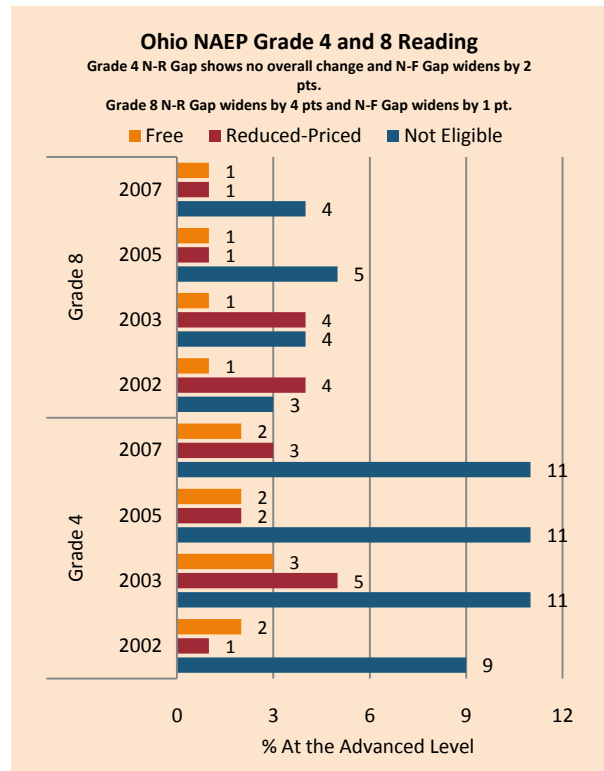
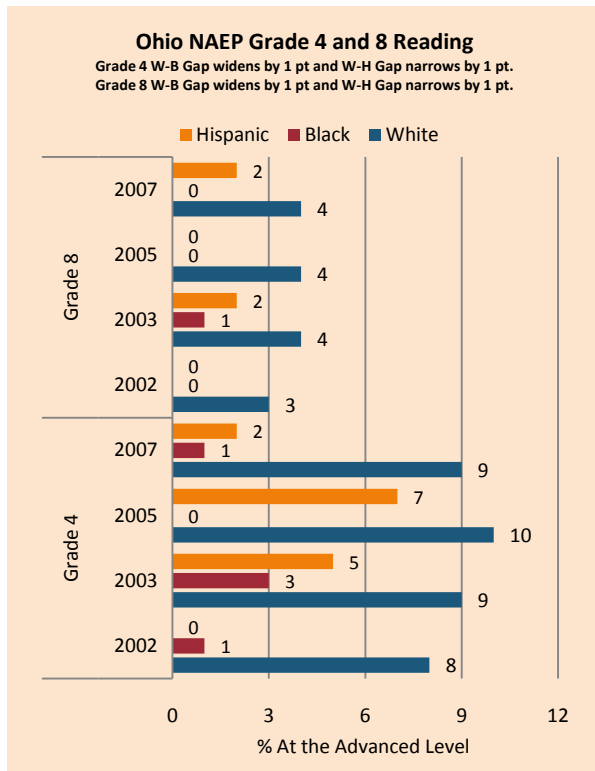
NAEP scale scores at the 90th percentile increased for most subgroups in Math, with FARM and Hispanic students improving more rapidly than their peers in Math Grade 8. Achievement gaps increased in Reading in large part due to declines among FARM and minority students.

The proportion of high-achieving students increased across grade levels among income and ethnic subgroups on Math assessments (except for Hispanic students in Grade 4), with over-represented populations growing more rapidly than under-represented groups. The results in Reading were more ambiguous, with reductions in the Excellence Gap in Grade 4 and 7 due to stagnation or decline among white and affluent students while Grade 10 saw similar patterns in Math.

On the AP exam, there were increases in achievement gaps in mean AP scores and the number of tests taken, weighted by enrollment. In the percentage of tests that scored a 5 (unweighted), the gap between white and African-American students increased while the gap between white and Hispanic students decreased. The gap between white and African-American students increased in the percentage of test that scored a 5 (weighted).

Summary of State Policy as of 2006-2007

State	Mandate Identify	Mandate Services	Gifted Identified	Identified by Gender	Identified by Ethnicity	GT Funding	GT Funding per Identified
Ohio	yes	no	286,604	no	yes	\$47,200,000	\$164.69



NAEP Scores at the 90 th Percentile				
Subject, Grade, Group	2003	2007	2003 Gap	2007 Gap
Math 4 Male	273	279	5	5
Math 4 Female	269	274		
Math 8 Male	325	328	5	5
Math 8 Female	320	323		
Reading 4 Male	262	262	5	5
Reading 4 Female	267	267		
Reading 8 Male	303	303	6	8
Reading 8 Female	309	311		
Math 4 ELL	260	270	11	7
Math 4 NonELL	271	277		
Math 8 ELL	283	319	39	6
Math 8 NonELL	322	325		
Reading 4 ELL	245	252	19	12
Reading 4 NonELL	265	264		
Reading 8 ELL				
Reading 8 NonELL	306	308		
Math 4 FARM	257	262	19	20
Math 4 NonFARM	276	281		
Math 8 FARM	301	307	26	24
Math 8 NonFARM	328	331		
Reading 4 FARM	251	249	18	20
Reading 4 NonFARM	269	269		
Reading 8 FARM	293	289	17	23
Reading 8 NonFARM	310	312		
Math 4 White	269	276		
Math 4 Black				
Math 4 Hispanic				
Math 8 White	325	328		
Math 8 Black	295	297	30	32
Math 8 Hispanic	308	316	17	13
Reading 4 White	267	267		
Reading 4 Black	247	243	20	24
Reading 4 Hispanic	257	250	10	17
Reading 8 White	309	310		
Reading 8 Black	285	284	24	26
Reading 8 Hispanic	305	300	3	11

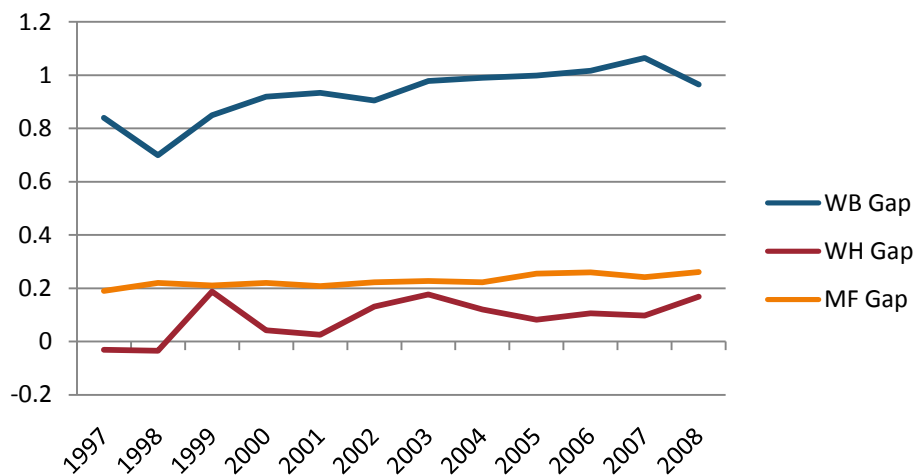
OH Achievement Test Grade 4, 7 and Graduation Test Grade 10 Reading Excellence Achievement Gaps on Race															
% At the Advanced Level	Grade 4					Grade 7					Grade 10				
	W	B	H	W-B	W-H	W	B	H	W-B	W-H	W	B	H	W-B	W-H
2002	7.3	2.0	3.2	5.3	4.1	Data not available during 2002-2003					Data not available during 2002-2003				
2003	10.7	3.8	5.3	6.9	5.4	Data not available during 2002-2005					Data not available during 2002-2003				
2004	17.2	5.9	7.8	11.3	9.4	Data not available during 2002-2005					14.6	4.1	5.9	10.5	8.7
2005	6.3	2.1	2.9	4.2	3.4	Data not available during 2002-2005					31.2	10.7	15.2	20.5	16.0
2006	7.6	2.6	4.2	5.0	3.4	18.2	3.9	7.3	14.3	10.9	24.4	7.5	11.0	16.9	13.4
2007	9.8	3.3	4.7	6.5	5.1	15.9	4.3	7.9	11.6	12.0	13.4	3.7	5.5	9.7	7.9
2008	6.4	2.3	2.6	4.1	3.8	16.3	5.2	7.5	11.1	8.8	20.3	6.2	9.3	14.1	11.0

OH Achievement Test Grade 4, 7 and Graduation Test Grade 10 Mathematics Excellence Achievement Gaps on Race															
% At the Advanced Level	Grade 4					Grade 7					Grade 10				
	W	B	H	W-B	W-H	W	B	H	W-B	W-H	W	B	H	W-B	W-H
2002	18.1	3.9	9.0	14.2	11.1	Data not available during 2002-2005					Data not available during 2002-2003				
2003	17.0	4.7	8.9	12.3	8.1	Data not available during 2002-2005					Data not available during 2002-2003				
2004	29.7	9.4	15.7	20.3	14.0	Data not available during 2002-2005					9.7	1.6	3.6	8.1	6.1
2005	29.2	11.1	16.3	18.1	12.9	7.8	1.6	2.4	6.2	5.4	30.9	6.5	12.6	24.4	18.3
2006	21.9	5.5	8.9	16.4	13.0	9.6	2.0	3.7	7.6	5.9	36.8	8.9	16.6	27.9	20.2
2007	20.0	5.4	8.8	14.6	11.2	8.6	2.2	4.0	6.4	4.6	34.7	7.0	13.9	27.7	20.8
2008	20.6	5.1	8.2	15.5	12.4	14.7	2.8	5.6	11.9	9.1	38.0	9.6	18.0	28.4	20.0

OH Achievement Test Grade 4, 7 and Graduation Test Grade 10 Reading Excellence Achievement Gaps on SES									
% At the Advanced Level	Grade 4			Grade 7			Grade 10		
	N	P	Gap	N	P	Gap	N	P	Gap
2002	7.5	2.4	5.4	Data not available during 2002-2005			Data not available during 2002-2003		
2003	12.0	4.5	7.5	Data not available during 2002-2005			Data not available during 2002-2003		
2004	19.5	7.4	12.1	Data not available during 2002-2005			15.0	5.2	9.8
2005	7.6	2.4	5.2	Data not available during 2002-2005			32.9	12.2	20.7
2006	9.1	3.3	5.8	21.0	5.6	15.4	26.4	8.7	17.7
2007	11.6	4.1	7.5	18.4	5.7	12.7	14.8	4.6	10.2
2008	7.8	2.6	5.2	19.1	6.7	12.4	22.1	8.6	13.5

OH Achievement Test Grade 4, 7 and Graduation Test Grade 10 Mathematics Excellence Achievement Gaps on SES									
% At the Advanced Level	Grade 4			Grade 7			Grade 10		
	N	P	Gap	N	P	Gap	N	P	Gap
2002	18.4	5.7	12.7	Data not available during 2002-2005			Data not available during 2002-2003		
2003	19.1	6.6	12.5						
2004	33.3	13.3	20.0						
2005	33.0	14.5	18.5	9.3	2.1	7.2	32.5	10.1	22.4
2006	25.7	8.6	17.1	11.3	2.8	8.5	39.1	14.0	25.1
2007	23.4	8.1	15.3	10.2	2.9	7.3	37.0	13.0	24.0
2008	24.6	8.2	16.4	17.3	4.9	12.4	40.4	16.9	23.5

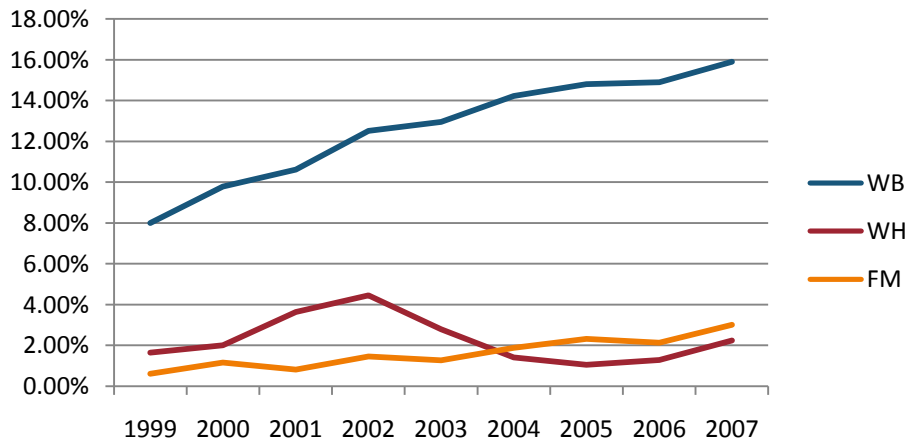
Gaps in Mean AP Scores



Gaps in the Percentage of Tests Taken Receiving a "5" on the AP Exam by Subgroup*												
	1997	1998	1999	2000	2001	2002	2003	2004	2005	2006	2007	2008
Male	16.23%	16.19%	16.32%	17.43%	16.88%	18.60%	18.20%	18.59%	18.27%	18.48%	18.18%	19.92%
Female	11.36%	10.28%	11.66%	11.90%	11.16%	12.28%	12.01%	12.67%	12.56%	11.97%	12.32%	13.18%
White	13.21%	12.50%	13.52%	14.14%	13.67%	14.90%	14.64%	15.09%	14.96%	14.56%	14.67%	15.93%
Black	4.30%	5.39%	3.96%	3.78%	3.93%	4.66%	4.21%	3.83%	4.45%	3.88%	3.59%	4.35%
Hispanic	17.63%	16.16%	10.89%	15.87%	20.29%	16.35%	13.60%	14.30%	14.02%	13.52%	16.09%	14.46%
M-F Gap	4.86%	5.91%	4.66%	5.52%	5.72%	6.32%	6.20%	5.92%	5.70%	6.52%	5.86%	6.74%
W-B Gap	8.90%	7.11%	9.56%	10.36%	9.74%	10.24%	10.43%	11.26%	10.51%	10.68%	11.08%	11.57%
W-H Gap	-4.42%	-3.66%	2.63%	-1.72%	-6.62%	-1.45%	1.04%	0.78%	0.94%	1.04%	-1.41%	1.47%

Gaps in the Percentage of Tests Taken Receiving a "5" on the AP Exam by Subgroup Weighted by Enrollment*									
	1999	2000	2001	2002	2003	2004	2005	2006	2007
Male	1.83%	2.08%	2.30%	2.73%	3.33%	3.56%	3.69%	4.04%	4.24%
Female	1.38%	1.56%	1.61%	1.98%	2.35%	2.66%	2.83%	2.87%	3.25%
White	1.68%	2.00%	2.16%	2.64%	2.73%	3.00%	3.17%	3.24%	3.60%
Black	0.18%	0.16%	0.21%	0.24%	0.24%	0.22%	0.28%	0.28%	0.31%
Hispanic	1.17%	1.92%	2.47%	2.17%	2.16%	2.65%	2.82%	2.83%	3.59%
M-F Gap	0.45%	0.52%	0.69%	0.75%	0.98%	0.90%	0.86%	1.17%	1.00%
W-B Gap	1.50%	1.84%	1.96%	2.40%	2.49%	2.79%	2.88%	2.95%	3.29%
W-H Gap	0.51%	0.07%	-0.31%	0.47%	0.57%	0.36%	0.35%	0.41%	0.01%

Gaps in the Number of Tests Taken Weighted by Subgroup Enrollment*



*The unit of analysis for AP data is the test, not the student. AP test results are presented as the number of scores received by members of each subgroup, NOT the number of students who received a given score on any exam. These numbers are not equivalent because some students take multiple tests.