

North Carolina

NAEP proficiency level and percentile data demonstrate the existence of substantial Excellence Gaps for African-American, Hispanic, and Free and Reduced Lunch Eligible students. White students had higher average AP scores than African-American students on AP tests and were more likely to make a “5” on an AP exam or take an AP exam than African-American or Hispanic students.

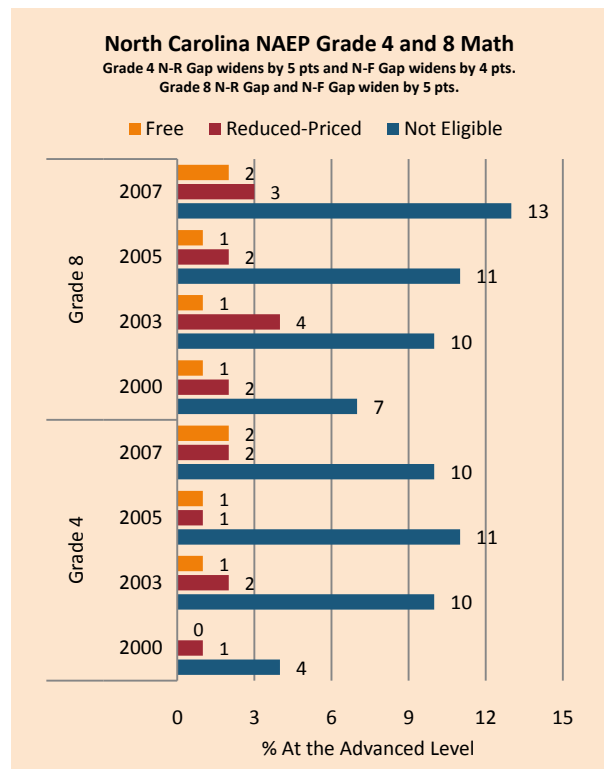
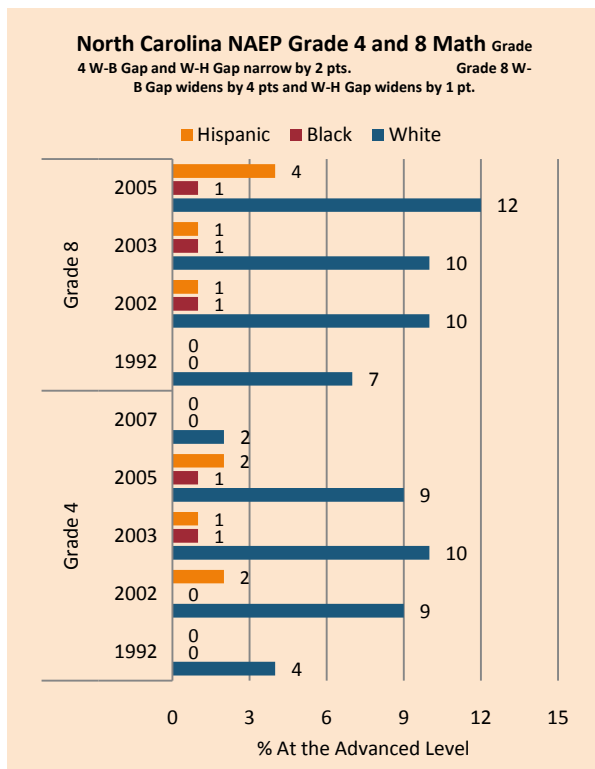
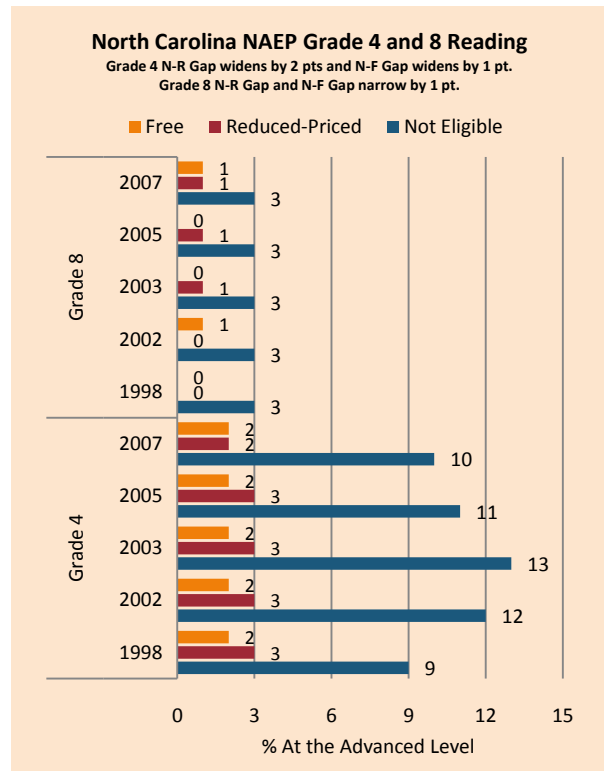
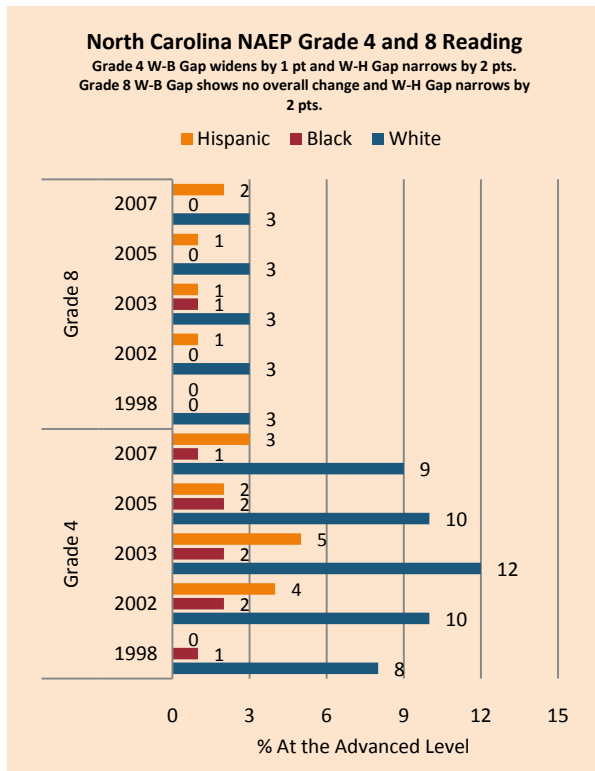
According to NAEP proficiency data, the percentage of students at the advanced level increased for FARM students in Math Grade 4 and Reading Grade 8, for non-FARM and white students in Math Grade 8, among African-American students in Math Grade 4, and Hispanic students in Grade 8 (both subjects). Achievement gaps declined in Math Grade 4 and in both subjects in Reading in most cases, in part due to weak non-FARM and white performance. Hispanic students improved more rapidly than white students in Math Grade 8.

NAEP scale scores at the 90th percentile increased for most groups in Math, with FARM and minority students usually improving more quickly than their peers. Student performance deteriorated in Reading Grade 4, as did white and African-American students’ scores in Reading Grade 8. Smaller achievement gaps in Reading were mainly due to flat or declining scores by white and non-FARM students. The Excellence Gap expanded for African-American students in Reading Grade 8 and for Hispanic students in Reading Grade 4.

On the AP exam, there were increases in achievement gaps in mean AP scores, the percentage of tests taken receiving a 5 (weighted), and the number of tests taken. There was also an increase in the gap between white and African-American students and a decrease in the gap between white and Hispanic students in the percentage of tests taken scoring a 5 (unweighted).

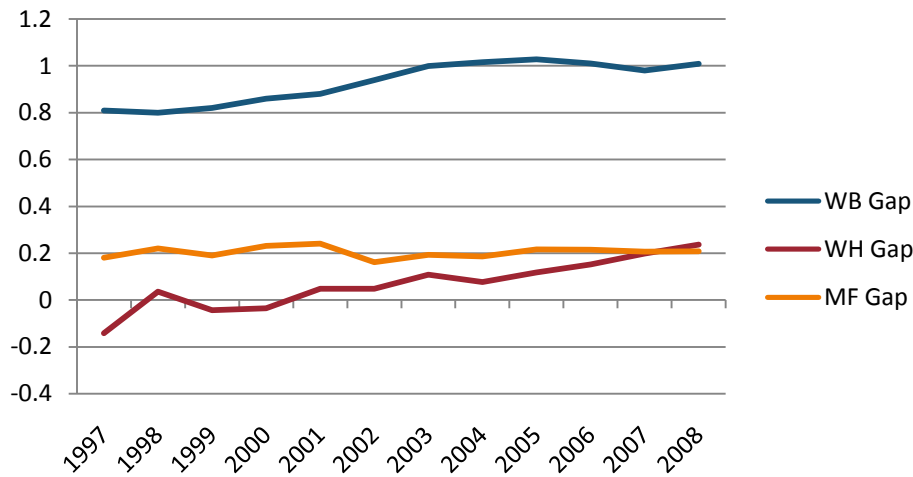
Summary of State Policy as of 2006-2007

State	Mandate Identify	Mandate Services	Gifted Identified	Identified by Gender	Identified by Ethnicity	GT Funding	GT Funding per Identified
North Carolina	yes	yes	150,000	no	NA	\$53,000,000	\$353.33



NAEP Scores at the 90 th Percentile				
Subject, Grade, Group	2003	2007	2003 Gap	2007 Gap
Math 4 Male	277	278	3	5
Math 4 Female	274	273		
Math 8 Male	327	331	1	5
Math 8 Female	327	326		
Reading 4 Male	260	257	10	7
Reading 4 Female	270	263		
Reading 8 Male	297	298	10	8
Reading 8 Female	307	305		
Math 4 ELL	264	256	12	20
Math 4 NonELL	276	276		
Math 8 ELL	295	303	33	27
Math 8 NonELL	328	329		
Reading 4 ELL	245	234	20	27
Reading 4 NonELL	266	262		
Reading 8 ELL	273	275	30	27
Reading 8 NonELL	303	302		
Math 4 FARM	260	263	22	19
Math 4 NonFARM	282	282		
Math 8 FARM	304	309	28	28
Math 8 NonFARM	333	337		
Reading 4 FARM	247	246	26	22
Reading 4 NonFARM	273	268		
Reading 8 FARM	286	287	23	21
Reading 8 NonFARM	308	308		
Math 4 White	275	279		
Math 4 Black	251	258	24	22
Math 4 Hispanic	255	264	20	16
Math 8 White	334	336		
Math 8 Black	301	306	33	31
Math 8 Hispanic	306	319	28	17
Reading 4 White	271	267		
Reading 4 Black	242	240	30	27
Reading 4 Hispanic	258	250	14	16
Reading 8 White	309	308		
Reading 8 Black	285	281	24	27
Reading 8 Hispanic	290	290	19	18

Gaps in Mean AP Scores



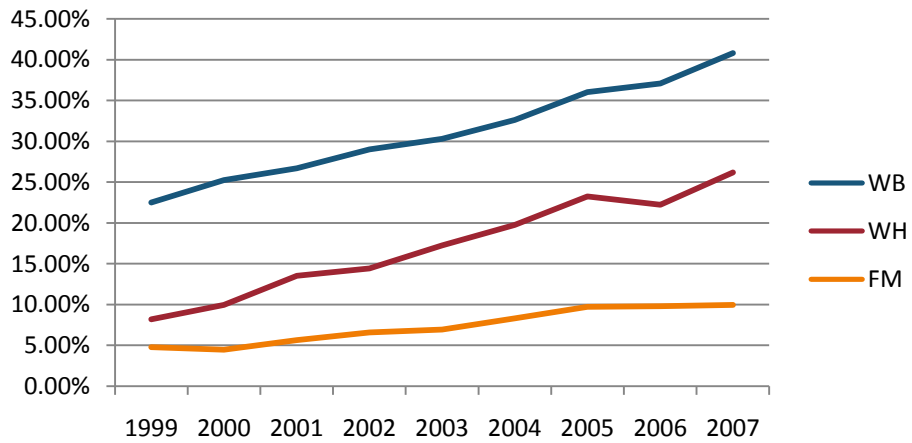
Gaps in the Percentage of Tests Taken Receiving a "5" on the AP Exam by Subgroup*

	1997	1998	1999	2000	2001	2002	2003	2004	2005	2006	2007	2008
Male	13.88%	14.80%	13.91%	13.94%	14.38%	14.47%	13.65%	14.59%	14.25%	14.00%	15.21%	15.36%
Female	9.73%	9.31%	9.48%	9.07%	8.60%	10.69%	9.69%	10.57%	9.94%	9.88%	10.86%	11.18%
White	11.61%	11.82%	11.72%	11.58%	11.68%	12.87%	12.12%	12.92%	12.58%	12.24%	13.30%	13.54%
Black	2.86%	2.39%	2.12%	2.42%	1.95%	3.09%	2.23%	2.60%	1.96%	2.18%	2.43%	2.67%
Hispanic	18.87%	14.33%	15.21%	18.86%	14.94%	14.60%	14.61%	15.28%	13.26%	13.44%	11.04%	12.41%
M-F Gap	4.15%	5.49%	4.43%	4.87%	5.78%	3.79%	3.97%	4.03%	4.32%	4.12%	4.35%	4.19%
W-B Gap	8.75%	9.44%	9.60%	9.16%	9.74%	9.78%	9.89%	10.32%	10.62%	10.06%	10.86%	10.87%
W-H Gap	-7.26%	-2.51%	-3.49%	-7.28%	-3.26%	-1.72%	-2.49%	-2.36%	-0.68%	-1.19%	2.25%	1.13%

Gaps in the Percentage of Tests Taken Receiving a "5" on the AP Exam by Subgroup
Weighted by Enrollment*

	1999	2000	2001	2002	2003	2004	2005	2006	2007
Male	3.09%	3.36%	3.76%	4.25%	4.34%	4.89%	5.17%	5.36%	6.20%
Female	2.56%	2.60%	2.73%	3.84%	3.75%	4.42%	4.58%	4.75%	5.51%
White	3.39%	3.70%	4.08%	5.02%	5.10%	5.85%	6.27%	6.31%	7.35%
Black	0.14%	0.16%	0.16%	0.31%	0.26%	0.33%	0.27%	0.31%	0.35%
Hispanic	3.16%	4.15%	3.20%	3.58%	3.62%	3.90%	3.53%	3.93%	3.21%
M-F Gap	0.53%	0.77%	1.02%	0.41%	0.59%	0.47%	0.60%	0.61%	0.69%
W-B Gap	3.26%	3.54%	3.92%	4.71%	4.84%	5.52%	6.00%	5.99%	7.00%
W-H Gap	0.24%	-0.45%	0.88%	1.44%	1.47%	1.95%	2.74%	2.37%	4.14%

Gaps in the Number of Tests Taken Weighted by Subgroup Enrollment*



*The unit of analysis for AP data is the test, not the student. AP test results are presented as the number of scores received by members of each subgroup, NOT the number of students who received a given score on any exam. These numbers are not equivalent because some students take multiple tests.