

New York

NAEP proficiency level and percentile data as well as results from state assessments demonstrate the existence of substantial Excellence Gaps for African-American, Hispanic, and Free and Reduced Lunch Eligible students. White students had higher average AP scores than African-American and Hispanic students on AP tests and were more likely to make a “5” on an AP exam or take an AP exam.

According to NAEP proficiency data, the percentage of students at the advanced level increased in Math Grade 4, among FARM students in Math Grade 8 and Reading Grade 4, and among non-FARM students in Reading Grade 4. Excellence Gaps increased in Math Grade 4 but declined in Math Grade 8 for FARM students, while declines in Reading Grade 8 were due to lower performances by white and non-FARM students.

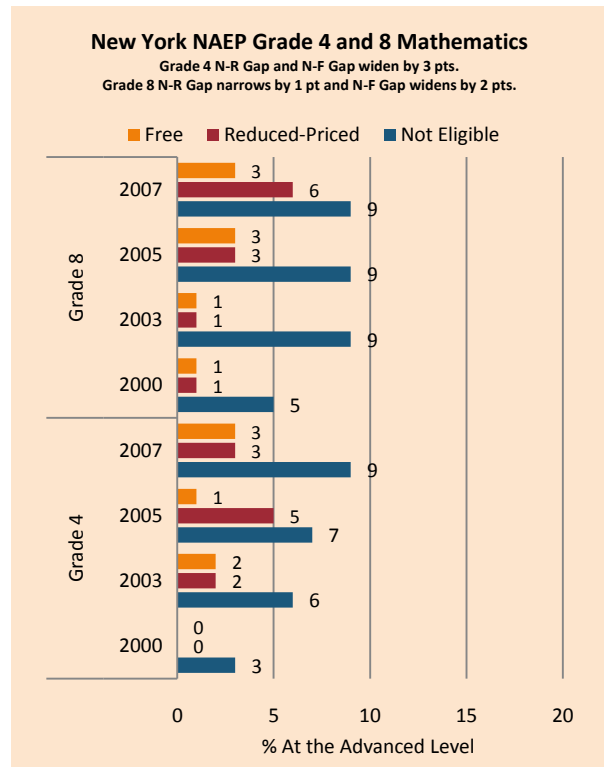
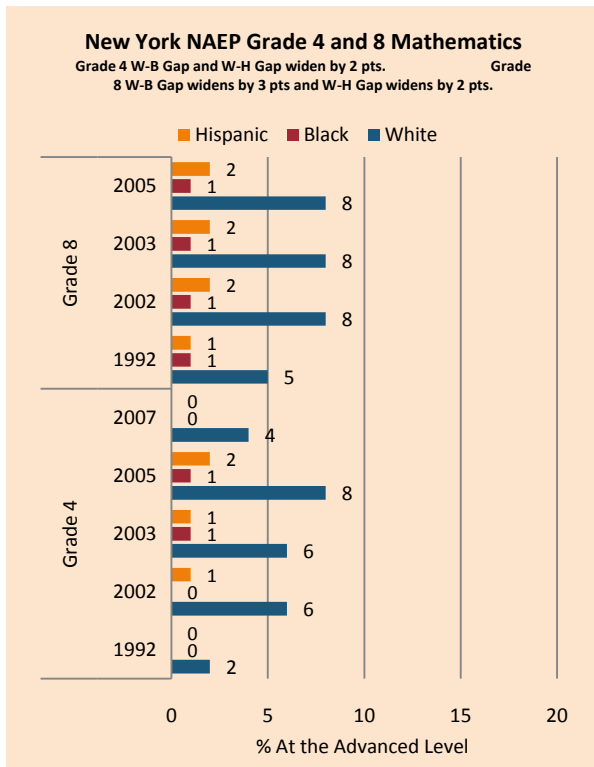
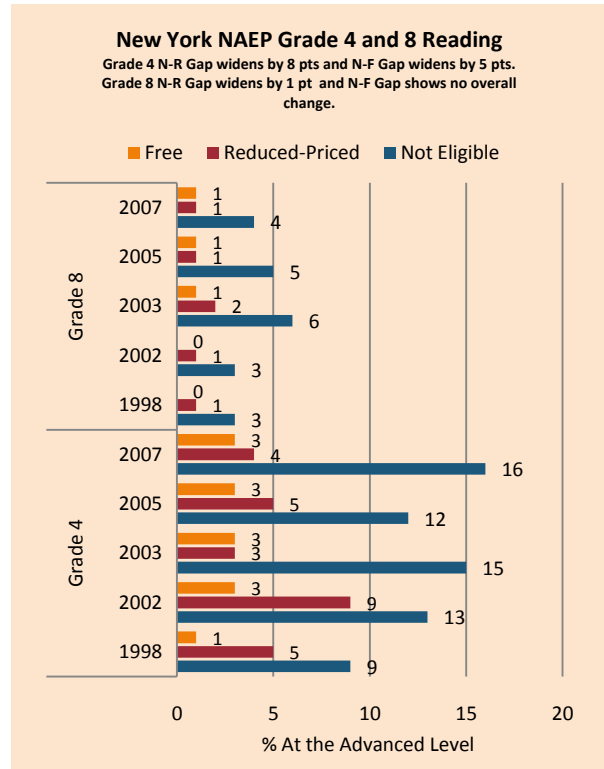
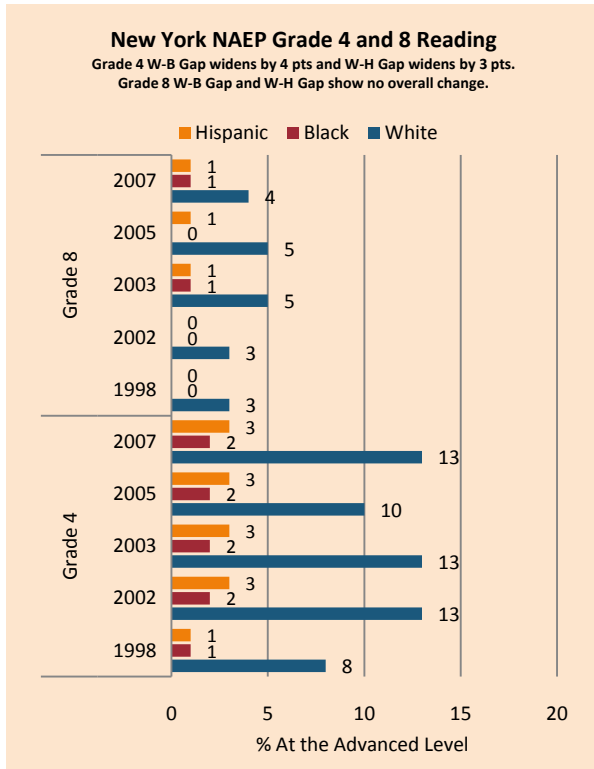
NAEP scale scores at the 90th percentile increased for most subgroups in both subjects in Grade 4 but usually declined in Grade 8. Achievement gaps narrowed in Math Grade 4 and for FARM students in Math Grade 8, but similar results in Reading Grade 8 were largely due to greater declines among white and non-FARM students.

Since 2006, the percentage of students across ethnic and income subgroups performing at the highest level on state assessments has increased in Math and declined in Reading Grade 7. The achievement gap in Math has widened since affluent and white students have improved more rapidly than low-income and minority students. Declines in Grade 7 Reading gaps are largely due to lesser achievement among white students.

On the AP exam, there were increases in achievement gaps in mean AP scores, the percentage of tests scoring a 5 weighted by enrollment, and the number of tests taken. The gap in the percentage of tests receiving a 5 (unweighted) increased for African-American students but declined for Hispanic students.

Summary of State Policy as of 2006-2007

State	Mandate Identify	Mandate Services	Gifted Identified	Identified by Gender	Identified by Ethnicity	GT Funding	GT Funding per Identified
New York	no	no	Not collected	no	no	\$0	N/A



NAEP Scores at the 90 th Percentile				
Subject, Grade, Group	2003	2007	2003 Gap	2007 Gap
Math 4 Male	272	279	4	5
Math 4 Female	268	274		
Math 8 Male	326	328	4	5
Math 8 Female	323	322		
Reading 4 Male	261	265	6	4
Reading 4 Female	268	269		
Reading 8 Male	303	300	9	8
Reading 8 Female	312	309		
Math 4 ELL	241	252	30	25
Math 4 NonELL	271	277		
Math 8 ELL	279	278	46	48
Math 8 NonELL	325	326		
Reading 4 ELL	228	227	37	42
Reading 4 NonELL	265	269		
Reading 8 ELL	260	253	48	52
Reading 8 NonELL	309	306		
Math 4 FARM	258	267	18	14
Math 4 NonFARM	277	281		
Math 8 FARM	307	313	24	19
Math 8 NonFARM	331	332		
Reading 4 FARM	250	251	24	24
Reading 4 NonFARM	274	275		
Reading 8 FARM	292	292	23	20
Reading 8 NonFARM	315	312		
Math 4 White	269	273		
Math 4 Black	247	257	21	16
Math 4 Hispanic	249	256	20	17
Math 8 White	330	329		
Math 8 Black	300	298	31	31
Math 8 Hispanic	309	308	21	21
Reading 4 White	272	273		
Reading 4 Black	245	248	26	25
Reading 4 Hispanic	249	250	22	23
Reading 8 White	314	310		
Reading 8 Black	287	286	27	24
Reading 8 Hispanic	292	291	22	19

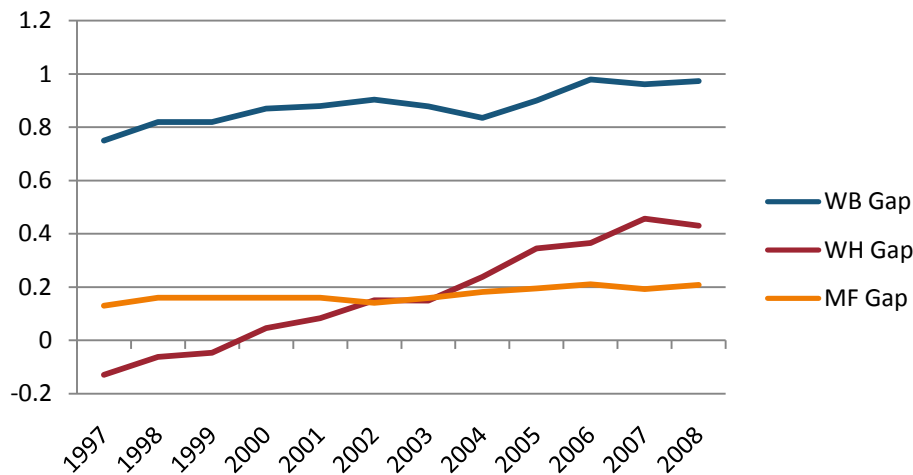
New York State Testing Program Grade 4, 7, 11 English/Language Arts Excellence Achievement Gaps on Race															
% At the Advanced Level	Grade 4					Grade 7					Grade 10				
	W	B	H	W-B	W-H	W	B	H	W-B	W-H	W	B	H	W-B	W-H
2005	27	10	11	17	16	13	3	3	10	10	Data is not available.				
2006	11	4	4	7	7	11	2	3	9	8	39	11	10	28	29
2007	12	3	3	9	9	8	2	2	6	6	41	12	12	29	29
2008	11	3	3	8	8	4	1	1	3	3	40	12	12	28	28

New York State Testing Program Grade 4, 7, 11 Mathematics Excellence Achievement Gaps on Race															
% At the Advanced Level	Grade 4					Grade 7					Grade 11				
	W	B	H	W-B	W-H	W	B	H	W-B	W-H	W	B	H	W-B	W-H
2005	47	22	25	25	22	13	2	3	11	10	Data is not available.				
2006	32	12	15	20	17	17	3	4	14	13	32	6	8	26	24
2007	34	13	17	21	17	24	6	8	18	16	35	7	9	28	26
2008	36	15	18	21	18	37	10	13	27	24	40	9	11	31	29

New York State Testing Program Grade 4, 7, 11 English/Language Arts Excellence Achievement Gaps on SES										
% At the Advanced Level	Grade 4			Grade 7			Grade 11			
	N	P	Gap	N	P	Gap	N	P	Gap	
2005	30	11	19	14	3	11	Data is not available.			
2006	12	4	8	11	3	8	36	12	24	
2007	13	3	10	9	2	7	38	14	24	
2008	13	4	9	4	1	3	37	14	23	

New York State Testing Program Grade 4, 7, 11 Mathematics Excellence Achievement Gaps on SES										
% At the Advanced Level	Grade 4			Grade 7			Grade 11			
	N	P	Gap	N	P	Gap	N	P	Gap	
2005	51	27	24	14	4	10	Data is not available.			
2006	32	18	14	17	6	11	29	11	18	
2007	37	18	19	27	10	17	32	13	19	
2008	40	20	20	40	15	25	37	15	22	

Gaps in Mean AP Scores



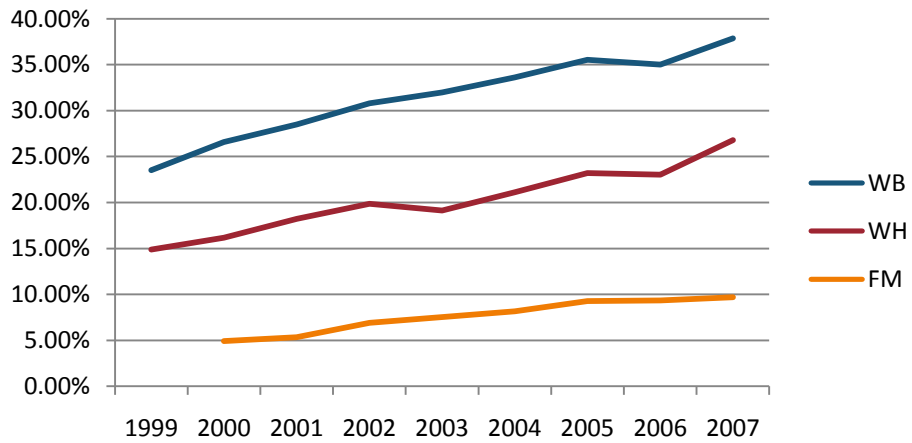
Gaps in the Percentage of Tests Taken Receiving a "5" on the AP Exam by Subgroup*

	1997	1998	1999	2000	2001	2002	2003	2004	2005	2006	2007	2008
Male	16.12%	16.78%	17.35%	17.43%	16.59%	17.50%	16.75%	17.91%	17.03%	18.40%	18.61%	18.56%
Female	13.52%	12.68%	13.35%	13.67%	12.53%	13.46%	12.64%	13.24%	12.56%	13.08%	13.70%	13.37%
White	13.68%	13.65%	14.45%	14.68%	13.89%	15.22%	14.20%	15.16%	14.70%	15.75%	16.30%	16.11%
Black	4.99%	4.06%	3.93%	4.38%	3.46%	4.30%	3.68%	4.78%	4.30%	4.08%	4.38%	3.94%
Hispanic	24.88%	22.64%	22.54%	22.40%	20.00%	17.91%	19.02%	17.03%	12.37%	13.24%	11.74%	12.05%
M-F Gap	2.60%	4.10%	4.00%	3.76%	4.06%	4.04%	4.11%	4.66%	4.47%	5.32%	4.92%	5.19%
W-B Gap	8.69%	9.59%	10.52%	10.31%	10.43%	10.91%	10.52%	10.38%	10.39%	11.67%	11.91%	12.17%
W-H Gap	-11.20%	-8.99%	-8.09%	-7.72%	-6.11%	-2.69%	-4.82%	-1.88%	2.33%	2.51%	4.56%	4.06%

Gaps in the Percentage of Tests Taken Receiving a "5" on the AP Exam by Subgroup Weighted by Enrollment*

	1999	2000	2001	2002	2003	2004	2005	2006	2007
Male		6.37%	6.39%	7.02%	6.95%	7.58%	7.31%	8.29%	8.75%
Female		5.67%	5.49%	6.33%	6.20%	6.68%	6.56%	7.11%	7.77%
White	5.04%	5.82%	5.83%	6.83%	6.63%	7.35%	7.42%	8.08%	9.04%
Black	0.45%	0.57%	0.47%	0.61%	0.54%	0.71%	0.64%	0.67%	0.77%
Hispanic	4.51%	5.25%	4.75%	4.48%	5.25%	4.66%	3.37%	3.74%	3.36%
M-F Gap		0.70%	0.89%	0.69%	0.75%	0.89%	0.75%	1.17%	0.98%
W-B Gap	4.59%	5.25%	5.36%	6.23%	6.09%	6.64%	6.78%	7.42%	8.27%
W-H Gap	0.53%	0.57%	1.08%	2.35%	1.39%	2.69%	4.05%	4.34%	5.68%

Gaps in the Number of Tests Taken Weighted by Subgroup Enrollment*



*The unit of analysis for AP data is the test, not the student. AP test results are presented as the number of scores received by members of each subgroup, NOT the number of students who received a given score on any exam. These numbers are not equivalent because some students take multiple tests.