

New Jersey

NAEP proficiency level and percentile data as well as results from state assessments demonstrate the existence of substantial Excellence Gaps for African-American, Hispanic, and Free and Reduced Lunch Eligible students. White students had higher average AP scores than African-American and Hispanic students on AP tests and were more likely to make a “5” on an AP exam or take an AP exam.

According to NAEP proficiency data, the percentage of students at the advanced level increased for all but Hispanic students in Math (both subjects) and Reading Grade 4, with Hispanic students improving in Math Grade 4. The Excellence Gap increased in Math favoring stronger white and non-FARM students’ performances, while the achievement gap increased in Reading for Hispanic students in Grade 4 and African-American and FARM students in Grade 8. African-Americans improved more quickly than white students in Grade 4.

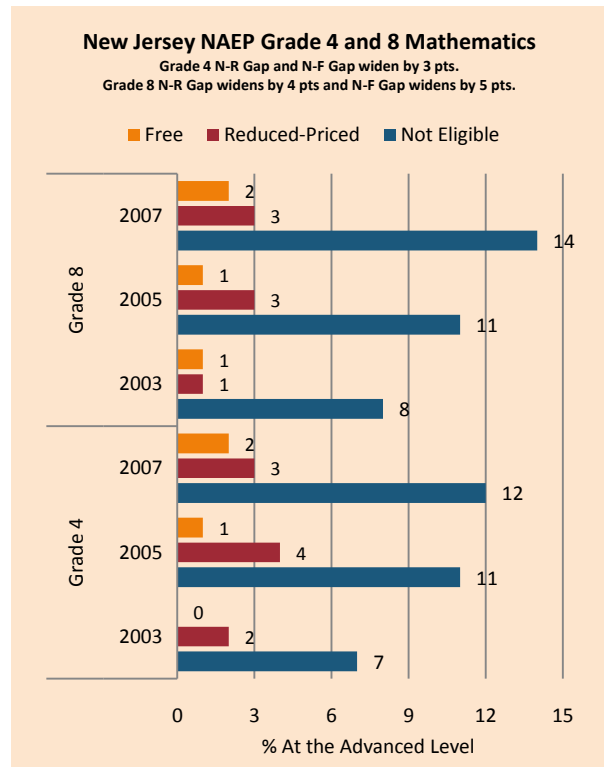
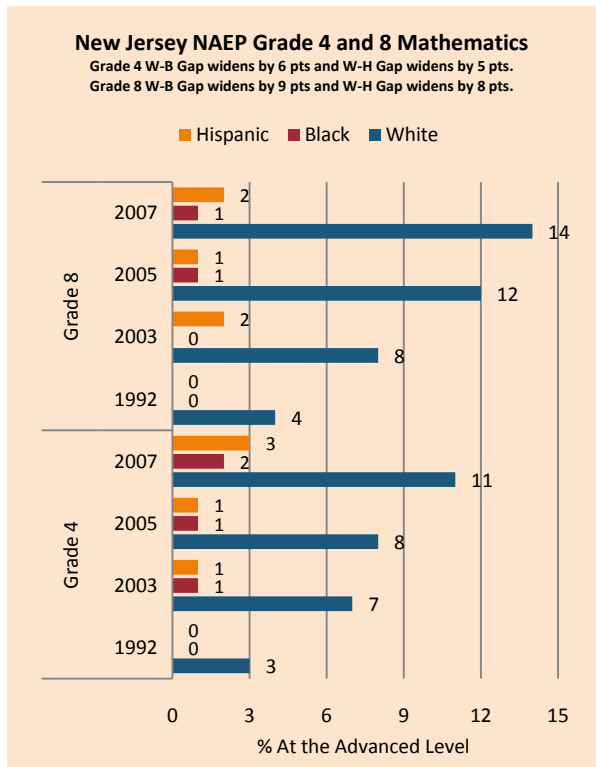
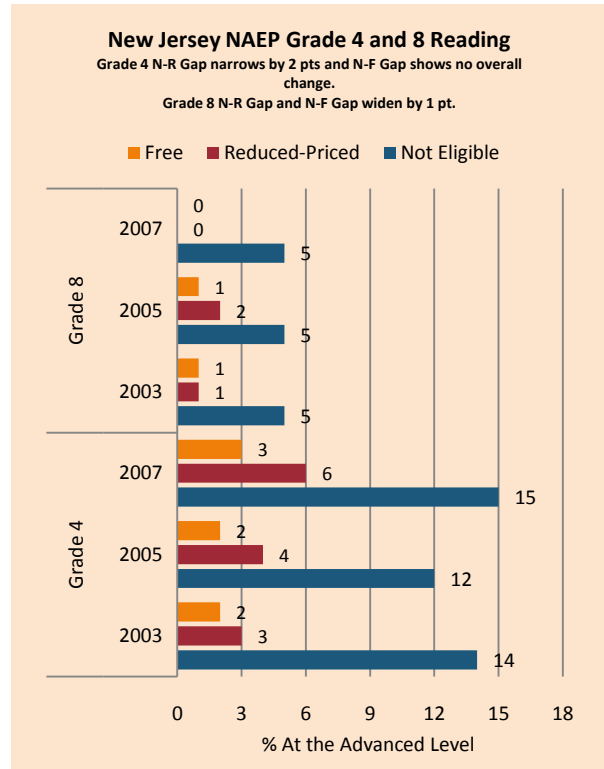
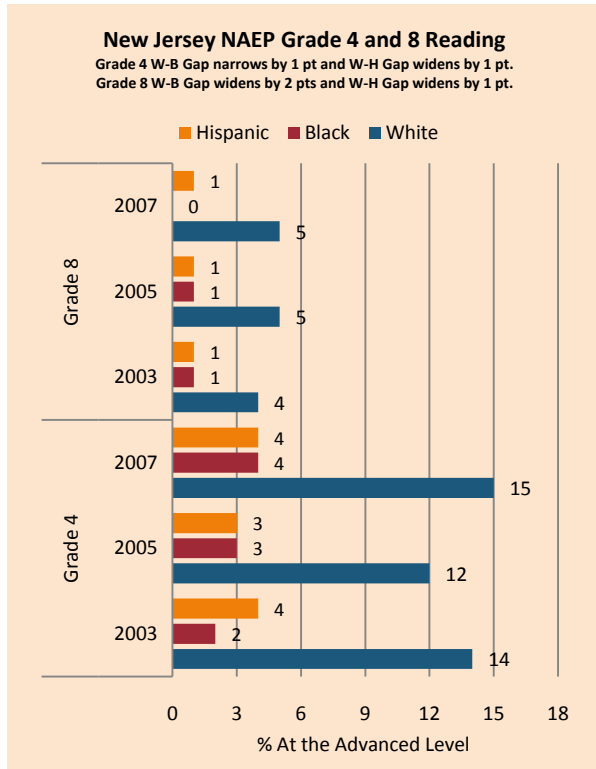
NAEP scale scores at the 90th percentile increased across subgroups on most assessments, with a narrowing of achievement gaps for FARM students in Math as well as Reading Grade 4 and for African-American and Hispanic students in both grades of Reading. White and non-FARM students’ performances were stable in Reading.

There was a general improvement in the percentage of students scoring at the advanced level on state assessments across income and ethnic subgroups on Grade 4 and 7 Reading and Math assessments, with the proportion of white and affluent students increasing more rapidly than African-American, Hispanic, and lower-income students. Declines in the Excellence Gap in Grade 11 were largely due to declines in white and affluent achievement. Grade 4 Reading performance was quite stable.

On the AP exam, there were modest increases in the achievement gap in mean AP scores, the percentage of tests taken that scored a 5 (weighted), and the number of tests taken. There was also an increase in the gap for African-American students in the 5’s (unweighted), but a decrease for Hispanic students.

Summary of State Policy as of 2006-2007

State	Mandate Identify	Mandate Services	Gifted Identified	Identified by Gender	Identified by Ethnicity	GT Funding	GT Funding per Identified
New Jersey	yes	yes	Not collected	no	no	\$0	N/A



NAEP Scores at the 90 th Percentile				
Subject, Grade, Group	2003	2007	2003 Gap	2007 Gap
Math 4 Male	276	283	4	4
Math 4 Female	272	279		
Math 8 Male	327	337	3	8
Math 8 Female	325	330		
Reading 4 Male	266	267	5	7
Reading 4 Female	272	274		
Reading 8 Male	304	305	8	8
Reading 8 Female	312	313		
Math 4 ELL	244	257	31	24
Math 4 NonELL	275	282		
Math 8 ELL		300		35
Math 8 NonELL	326	335		
Reading 4 ELL	221	232	48	39
Reading 4 NonELL	269	271		
Reading 8 ELL		270		39
Reading 8 NonELL	309	310		
Math 4 FARM	256	264	22	20
Math 4 NonFARM	278	285		
Math 8 FARM	299	309	31	31
Math 8 NonFARM	330	340		
Reading 4 FARM	246	251	27	23
Reading 4 NonFARM	273	274		
Reading 8 FARM	289	289	23	25
Reading 8 NonFARM	312	313		
Math 4 White	275	279		
Math 4 Black		261		18
Math 4 Hispanic	260	262	15	17
Math 8 White	329	339		
Math 8 Black	294	304	35	35
Math 8 Hispanic	307	313	22	26
Reading 4 White	274	274		
Reading 4 Black	245	254	29	20
Reading 4 Hispanic	252	256	21	19
Reading 8 White	312	313		
Reading 8 Black	288	291	24	22
Reading 8 Hispanic	289	293	23	20

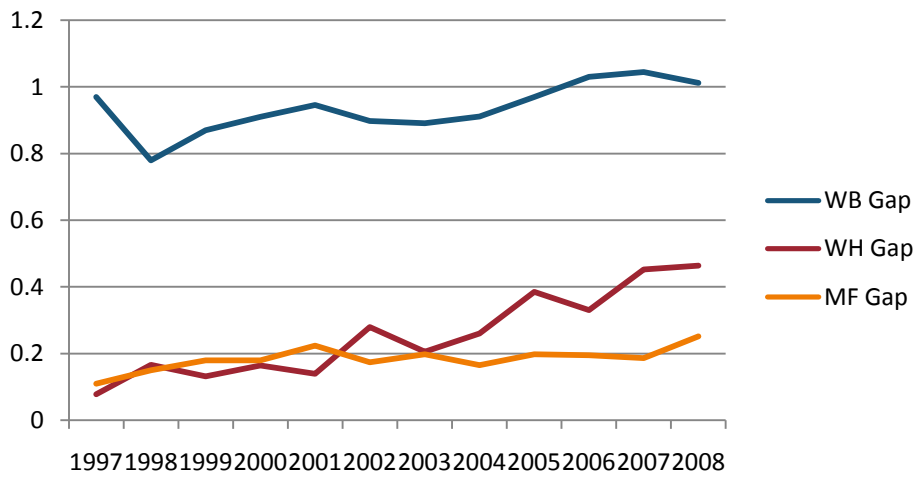
NJ Assessment of Skills and Knowledge Grade 4 and 7, High School Proficiency Assessment Grade 11 English/Language Arts Excellence Achievement Gaps on Race															
% At the Advanced Level	Grade 4					Grade 7					Grade 11				
	W	B	H	W-B	W-H	W	B	H	W-B	W-H	W	B	H	W-B	W-H
2004	6	1	1	5	5	Data is not Available					22	5	6	17	16
2005	6	1	1	5	5	Data is not Available					25	5	6	20	19
2006	5	1	1	4	4	5	1	2	4	3	28	6	8	22	20
2007	8	2	2	6	6	16	3	4	13	12	24	6	8	18	16
2008	6	1	1	5	5	19	3	4	16	15	15	3	4	12	11

NJ Assessment of Skills and Knowledge Grade 4 and 7, High School Proficiency Assessment Grade 11 Mathematics Excellence Achievement Gaps on Race															
% At the Advanced Level	Grade 4					Grade 7					Grade 11				
	W	B	H	W-B	W-H	W	B	H	W-B	W-H	W	B	H	W-B	W-H
2004	31	11	15	20	16	Data is not Available					31	4	7	27	24
2005	37	15	20	22	17	Data is not Available					35	6	9	29	26
2006	49	18	27	31	22	8	1	4	7	4	33	5	9	28	24
2007	50	19	25	31	25	20	3	5	17	15	29	5	8	24	21
2008	49	19	25	30	25	25	5	8	20	17	29	5	7	24	22

NJ Assessment of Skills and Knowledge Grade 4 and 7, High School Proficiency Assessment Grade 11 English/Language Arts Excellence Achievement Gaps on SES									
% At the Advanced Level	Grade 4			Grade 7			Grade 11		
	N	P	Gap	N	P	Gap	N	P	Gap
2004	6	1	5	Data is not Available			20	4	16
2005	6	1	5	Data is not Available			22	5	17
2006	5	1	4	3	1	2	26	5	21
2007	9	2	7	16	3	13	23	6	17
2008	6	1	5	19	3	16	14	3	11

NJ Assessment of Skills and Knowledge Grade 4 and 7, High School Proficiency Assessment Grade 11 Mathematics Excellence Achievement Gaps on SES									
% At the Advanced Level	Grade 4			Grade 7			Grade 11		
	N	P	Gap	N	P	Gap	N	P	Gap
2004	31	13	18	Data is not Available			47	5	42
2005	38	17	21	Data is not Available			32	8	24
2006	49	23	26	5	2	3	31	8	23
2007	49	22	27	20	4	16	27	7	20
2008	49	22	27	25	7	18	28	6	22

Gaps in Mean AP Scores



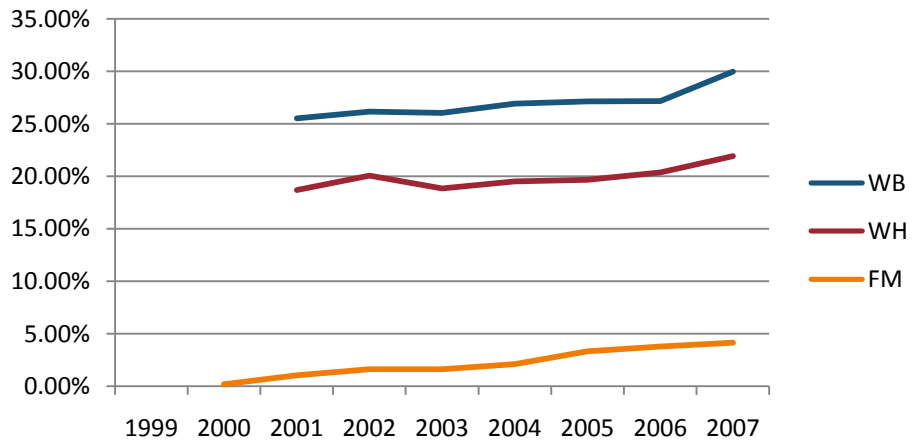
Gaps in the Percentage of Tests Taken Receiving a "5" on the AP Exam by Subgroup*

	1997	1998	1999	2000	2001	2002	2003	2004	2005	2006	2007	2008
Male	20.97%	22.38%	22.17%	22.63%	22.03%	22.97%	23.74%	23.61%	23.51%	24.39%	24.81%	25.56%
Female	16.94%	16.50%	16.88%	16.86%	15.19%	17.18%	17.03%	18.31%	17.03%	17.64%	18.30%	18.10%
White	16.94%	17.80%	18.27%	19.03%	17.63%	18.88%	18.41%	19.56%	19.05%	19.95%	20.47%	20.58%
Black	5.04%	6.92%	6.11%	5.87%	5.06%	6.65%	5.74%	5.92%	6.36%	6.12%	5.82%	6.41%
Hispanic	25.24%	20.80%	21.75%	23.32%	22.75%	18.31%	22.16%	20.34%	15.59%	16.84%	15.74%	15.51%
M-F Gap	4.03%	5.88%	5.29%	5.77%	6.84%	5.79%	6.71%	5.30%	6.48%	6.75%	6.51%	7.46%
W-B Gap	11.90%	10.88%	12.16%	13.16%	12.57%	12.22%	12.67%	13.64%	12.69%	13.84%	14.65%	14.16%
W-H Gap	-8.30%	-3.00%	-3.48%	-4.30%	-5.12%	0.57%	-3.76%	-0.78%	3.46%	3.12%	4.73%	5.06%

Gaps in the Percentage of Tests Taken Receiving a "5" on the AP Exam by Subgroup Weighted by Enrollment*

	1999	2000	2001	2002	2003	2004	2005	2006	2007
Male		6.84%	6.61%	7.21%	7.52%	7.80%	7.87%	8.46%	9.24%
Female		5.13%	4.71%	5.67%	5.67%	6.44%	6.27%	6.78%	7.58%
White			5.71%	6.21%	6.08%	6.78%	6.80%	7.27%	8.19%
Black			0.35%	0.45%	0.40%	0.46%	0.54%	0.57%	0.58%
Hispanic			3.12%	2.35%	3.14%	3.08%	2.50%	2.70%	2.84%
M-F Gap		1.71%	1.89%	1.54%	1.84%	1.37%	1.60%	1.67%	1.66%
W-B Gap			5.37%	5.76%	5.68%	6.32%	6.26%	6.70%	7.60%
W-H Gap			2.59%	3.86%	2.93%	3.70%	4.30%	4.57%	5.35%

Gaps in the Number of Tests Taken Weighted by Subgroup Enrollment*



*The unit of analysis for AP data is the test, not the student. AP test results are presented as the number of scores received by members of each subgroup, NOT the number of students who received a given score on any exam. These numbers are not equivalent because some students take multiple tests.