

# Nevada

NAEP proficiency level and percentile data as well as results from state assessments demonstrate the existence of substantial Excellence Gaps for African-American, Hispanic, and Free and Reduced Lunch Eligible students. White students had higher average AP scores than African-American and Hispanic students on AP tests and were more likely to make a “5” on an AP exam or take an AP exam.

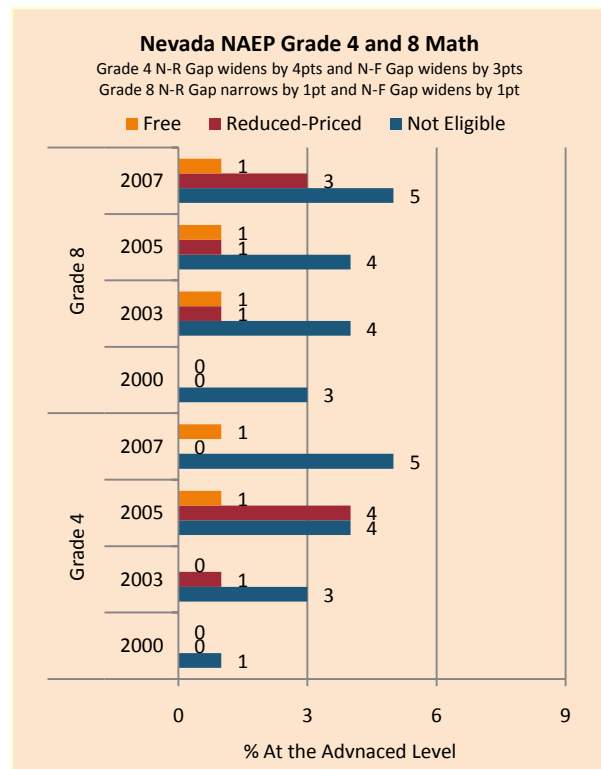
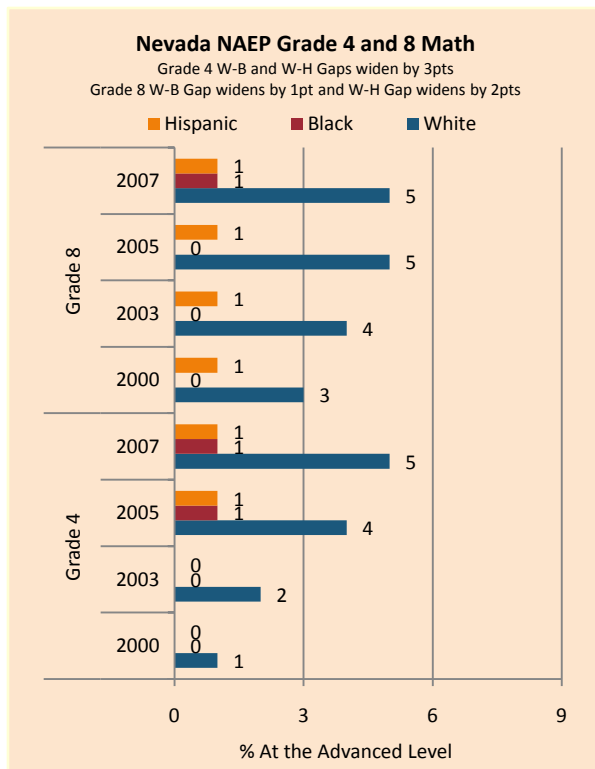
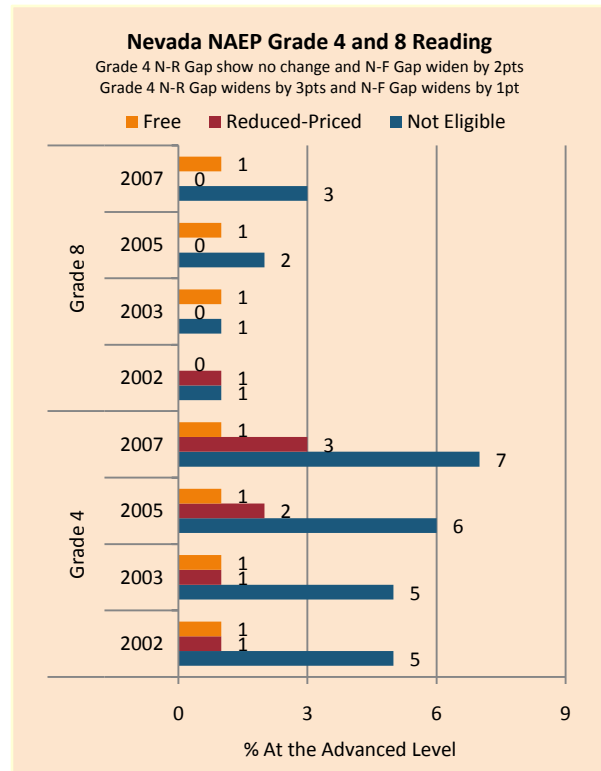
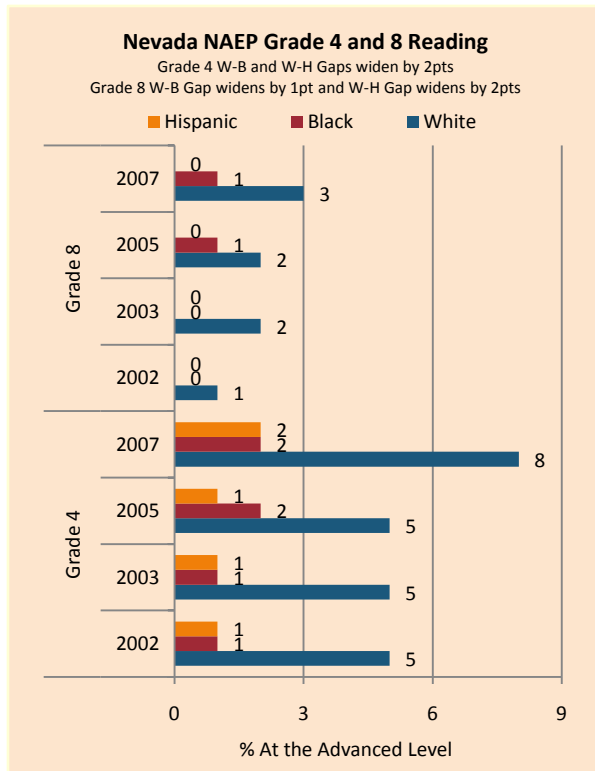
According to NAEP proficiency data, the percentage of students at the advanced level increased in Math and Reading in both grades except for FARM and Hispanic students in Grade 8 Reading. With the exception of African-American students in Grade 8 (both subjects) and FARM students in Grade 8 Math, the Excellence Gap generally increased.

NAEP scale scores at the 90<sup>th</sup> percentile increased across assessments and subgroups with the sole exception of FARM students in Reading Grade 8. African-American students improved more quickly than white students, with major gains in Reading, while Hispanic students did likewise in Math and Reading Grade 8 and FARM students in Reading Grade 4.

The percentage of white, Hispanic, and African-American students scoring at the highest level of achievement was quite stable in both Math and Reading and across grade levels. There was little change in the size of the achievement gap.

On the AP exams, there were increases in the achievement gaps in mean AP scores, the percentage of 5’s (weighted), and the number of exams taken. The gap between white and African-American students in the percentage of tests that scored a 5 (unweighted) widened, but narrowed between white and Hispanic students.

Summary of State Policy as of 2006-2007							
State	Mandate Identify	Mandate Services	Gifted Identified	Identified by Gender	Identified by Ethnicity	GT Funding	GT Funding per Identified
Nevada	no	no	Not collected	no	no	\$0	N/A



NAEP Scores at the 90 <sup>th</sup> Percentile				
Subject, Grade, Group	2003	2007	2003 Gap	2007 Gap
Math 4 Male	264	271	5	6
Math 4 Female	259	265		
Math 8 Male	315	319	3	3
Math 8 Female	312	316		
Reading 4 Male	248	254	8	4
Reading 4 Female	255	259		
Reading 8 Male	288	289	13	15
Reading 8 Female	300	304		
Math 4 ELL	241	245	23	26
Math 4 NonELL	263	271		
Math 8 ELL	279	282	36	37
Math 8 NonELL	314	319		
Reading 4 ELL	223	224	31	35
Reading 4 NonELL	254	260		
Reading 8 ELL	261	268	35	30
Reading 8 NonELL	296	298		
Math 4 FARM	250	256	18	18
Math 4 NonFARM	268	274		
Math 8 FARM	300	305	18	18
Math 8 NonFARM	318	322		
Reading 4 FARM	237	242	21	20
Reading 4 NonFARM	258	263		
Reading 8 FARM	285	284	14	19
Reading 8 NonFARM	299	303		
Math 4 White	272	275		
Math 4 Black	243	248	29	27
Math 4 Hispanic	247	255	25	20
Math 8 White	319	324		
Math 8 Black	296	304	23	21
Math 8 Hispanic	293	300	26	24
Reading 4 White	258	264		
Reading 4 Black	237	247	21	17
Reading 4 Hispanic	239	243	19	21
Reading 8 White	301	305		
Reading 8 Black	275	293	26	12
Reading 8 Hispanic	278	283	23	22

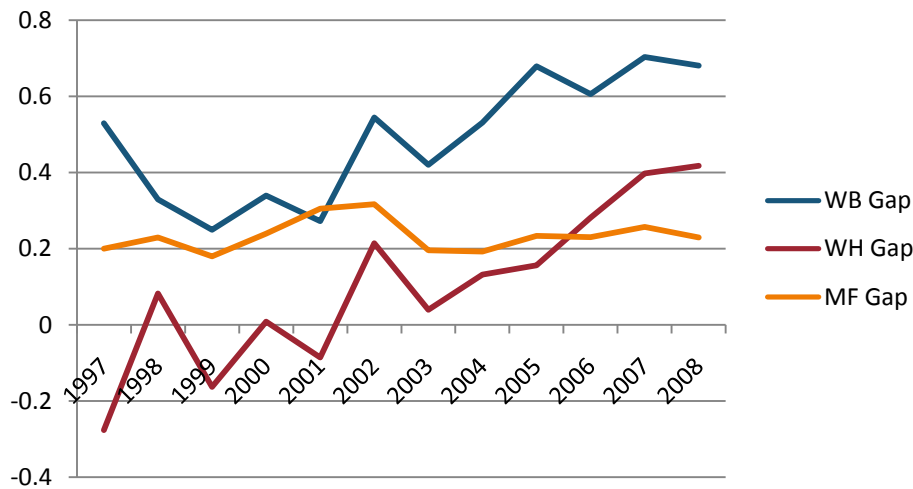
Nevada Proficiency Examination Program (CRT) and High School Proficiency Examination Grade 4, 7, 10/11 English/Language Arts Excellence Achievement Gaps on Race															
% At or Above Advanced Level	Grade 4					Grade 7					Grade 11				
	W	B	H	W-B	W-H	W	B	H	W-B	W-H	W	B	H	W-B	W-H
<b>2007</b>	25	10	8	<b>15</b>	<b>17</b>	21	7	6	<b>14</b>	<b>15</b>	60	30	31	<b>30</b>	<b>29</b>
<b>2008</b>	23	9	8	<b>14</b>	<b>15</b>	18	7	6	<b>11</b>	<b>12</b>	59	31	30	<b>28</b>	<b>29</b>

Nevada Proficiency Examination Program (CRT) and High School Proficiency Examination Grade 4, 7, 10/11 Mathematics Excellence Achievement Gaps on Race															
% At or Above Advanced Level	Grade 4					Grade 7					Grade 11				
	W	B	H	W-B	W-H	W	B	H	W-B	W-H	W	B	H	W-B	W-H
<b>2007</b>	38	16	20	<b>22</b>	<b>18</b>	28	8	9	<b>20</b>	<b>19</b>	22	6	8	<b>16</b>	<b>14</b>
<b>2008</b>	36	15	20	<b>21</b>	<b>16</b>	29	9	12	<b>20</b>	<b>17</b>	25	7	9	<b>18</b>	<b>16</b>

Nevada Proficiency Examination Program (CRT) and High School Proficiency Examination Grade 4, 7, 10/11 English/Language Arts Excellence Achievement Gaps on SES										
% At or Above Advanced Level	Grade 4			Grade 7			Grade 11			
	N	P	Gap	N	P	Gap	N	P	Gap	
<b>2007</b>	23	8	<b>15</b>	19	6	<b>13</b>	53	29	<b>24</b>	
<b>2008</b>	22	8	<b>14</b>	17	5	<b>12</b>	53	29	<b>24</b>	

Nevada Proficiency Examination Program (CRT) and High School Proficiency Examination Grade 4, 7, 10/11 Mathematics Excellence Achievement Gaps on SES									
% At or Above Advanced Level	Grade 4			Grade 7			Grade 11		
	N	P	Gap	N	P	Gap	N	P	Gap
<b>2007</b>	36	19	<b>17</b>	25	9	<b>16</b>	19	7	<b>12</b>
<b>2008</b>	35	19	<b>16</b>	28	11	<b>17</b>	22	9	<b>13</b>

Gaps in Mean AP Scores



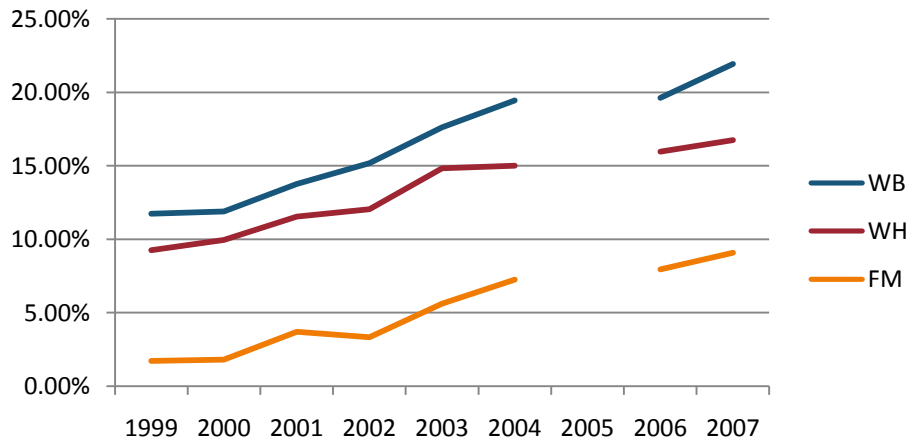
Gaps in the Percentage of Tests Taken Receiving a "5" on the AP Exam by Subgroup\*

	1997	1998	1999	2000	2001	2002	2003	2004	2005	2006	2007	2008
Male	12.78%	10.83%	11.93%	11.70%	12.14%	13.57%	10.93%	11.65%	10.00%	10.48%	10.38%	10.97%
Female	8.12%	6.35%	7.07%	7.58%	6.82%	7.82%	7.16%	7.96%	6.65%	6.69%	6.21%	6.99%
White	9.22%	8.45%	8.77%	8.79%	8.94%	10.63%	8.50%	9.21%	8.02%	8.98%	8.82%	9.43%
Black	3.75%	0.76%	4.44%	1.65%	5.13%	4.91%	4.33%	4.30%	2.96%	4.40%	2.74%	2.65%
Hispanic	21.19%	11.21%	14.15%	15.36%	12.62%	10.78%	12.69%	13.25%	8.35%	7.91%	6.78%	7.47%
M-F Gap	4.66%	4.48%	4.86%	4.12%	5.33%	5.75%	3.77%	3.68%	3.35%	3.79%	4.16%	3.98%
W-B Gap	5.47%	7.68%	4.33%	7.14%	3.81%	5.72%	4.18%	4.91%	5.06%	4.58%	6.08%	6.79%
W-H Gap	-11.97%	-2.76%	-5.38%	-6.57%	-3.68%	-0.15%	-4.19%	-4.04%	-0.33%	1.07%	2.03%	1.96%

Gaps in the Percentage of Tests Taken Receiving a "5" on the AP Exam by Subgroup Weighted by Enrollment\*

	1999	2000	2001	2002	2003	2004	2005	2006	2007
Male	2.37%	2.59%	2.64%	3.39%	3.95%	4.83%		2.65%	2.80%
Female	4.66%	4.73%	5.07%	6.06%	7.43%	7.98%		2.22%	2.24%
White	1.03%	1.14%	1.16%	1.61%	1.72%	2.19%		2.78%	2.98%
Black	2.51%	2.93%	2.70%	3.73%	3.71%	4.02%		0.50%	0.33%
Hispanic	3.73%	4.19%	4.17%	5.15%	5.48%	6.00%		1.19%	1.16%
M-F Gap	0.51%	0.41%	0.46%	0.73%	0.29%	0.17%		0.43%	0.56%
W-B Gap	1.15%	1.28%	1.35%	1.90%	1.74%	2.11%		2.28%	2.66%
W-H Gap	0.54%	0.53%	0.83%	1.27%	0.90%	0.94%		1.59%	1.82%

**Gaps in the Number of Tests Taken Weighted by Subgroup Enrollment\***



\*The unit of analysis for AP data is the test, not the student. AP test results are presented as the number of scores received by members of each subgroup, NOT the number of students who received a given score on any exam. These numbers are not equivalent because some students take multiple tests.