

# Nebraska

NAEP proficiency level and percentile data demonstrate the existence of substantial Excellence Gaps for African-American, Hispanic, and Free and Reduced Lunch Eligible students. White students had higher average AP scores than African-American and Hispanic students on AP tests and were more likely to make a “5” on an AP exam (weighted by enrollment) or take an AP exam.

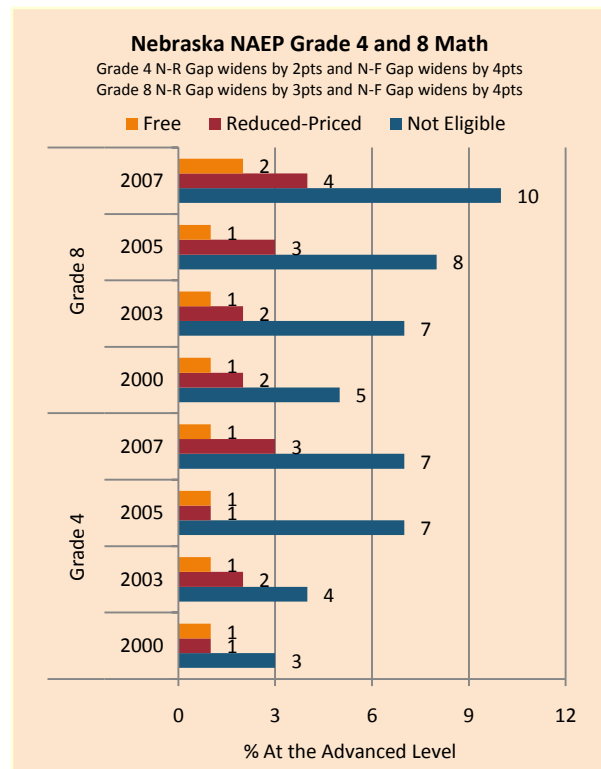
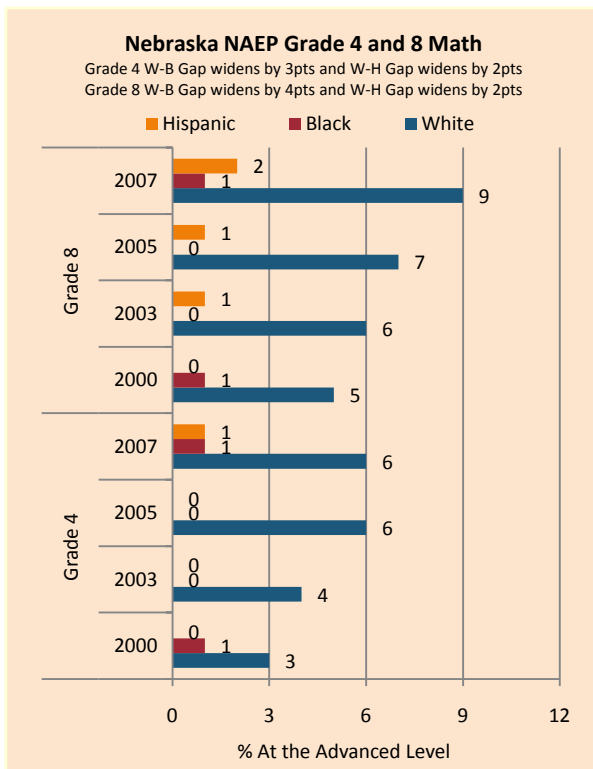
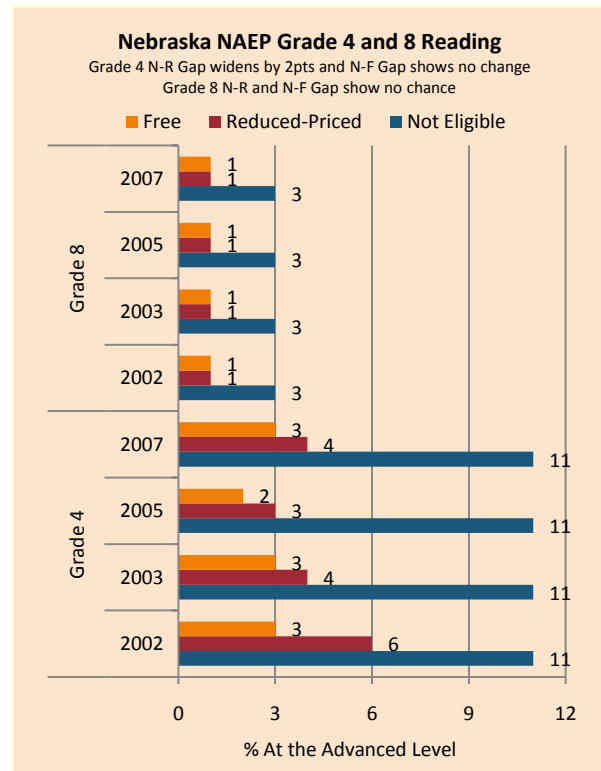
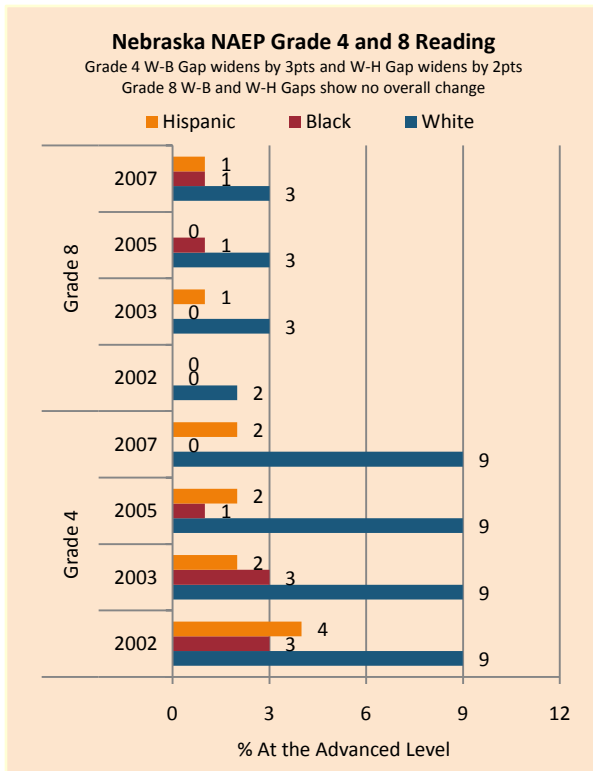
According to NAEP proficiency data, the percentage of students at the advanced level increased in Math across subgroups, with non-FARM and white students improving more rapidly than their peers. There was relative stability in Reading, with a decline in performance among African-American students in Grade 4 and an improvement in Grade 8 the only noticeable changes.

NAEP scale scores at the 90<sup>th</sup> percentile increased for FARM, non-FARM, and white students in Math, with additional gains by Hispanic students in Grade 8 Math and both grades of Reading, African-American students in Reading Grade 8, and white students in Reading Grade 4. The Excellence Gap for African-American students increased considerably due to declines in performance in Math Grade 8 and Reading Grade 4, with Hispanic students also trailing in Math as well as FARM students in Grade 8 (both subjects). The gaps in math narrowed for Hispanic students in both grades and for African-American students in Grade 8 on stable performance among white students.

On the AP exams, there was a modest decrease in the gap between white and African American students and between white and Hispanic students in mean AP scores. There were also decreases in achievement gaps as measured by the percentage of tests that scored a 5, but the gaps in the number of tests taken widened during the same period.

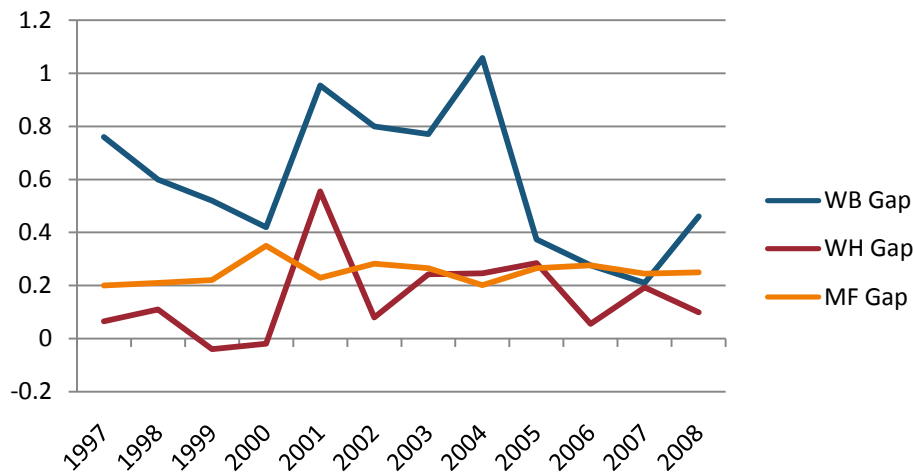
**Summary of State Policy as of 2006-2007**

State	Mandate Identify	Mandate Services	Gifted Identified	Identified by Gender	Identified by Ethnicity	GT Funding	GT Funding per Identified
Nebraska	yes	no	42,212	no	yes	\$2,800,000	\$66.33



NAEP Scores at the 90 <sup>th</sup> Percentile				
Subject, Grade, Group	2003	2007	2003 Gap	2007 Gap
Math 4 Male	271	275	3	4
Math 4 Female	268	271		
Math 8 Male	325	330	4	3
Math 8 Female	321	327		
Reading 4 Male	262	262	4	4
Reading 4 Female	266	266		
Reading 8 Male	300	301	10	10
Reading 8 Female	310	310		
Math 4 ELL	237	245	34	29
Math 4 NonELL	271	274		
Math 8 ELL		276		52
Math 8 NonELL	323	329		
Reading 4 ELL	224	238	41	27
Reading 4 NonELL	265	265		
Reading 8 ELL				
Reading 8 NonELL	306	306		
Math 4 FARM	257	261	16	16
Math 4 NonFARM	274	277		
Math 8 FARM	307	310	21	23
Math 8 NonFARM	327	333		
Reading 4 FARM	251	251	18	18
Reading 4 NonFARM	269	269		
Reading 8 FARM	295	294	14	15
Reading 8 NonFARM	309	309		
Math 4 White	268	276		
Math 4 Black				
Math 4 Hispanic	266	272	2	3
Math 8 White	325	331		
Math 8 Black	291	283	33	48
Math 8 Hispanic	300	300	25	32
Reading 4 White	266	267		
Reading 4 Black	249	238	17	29
Reading 4 Hispanic	244	247	22	20
Reading 8 White	307	308		
Reading 8 Black	281	285	26	22
Reading 8 Hispanic	284	293	23	14

Gaps in Mean AP Scores



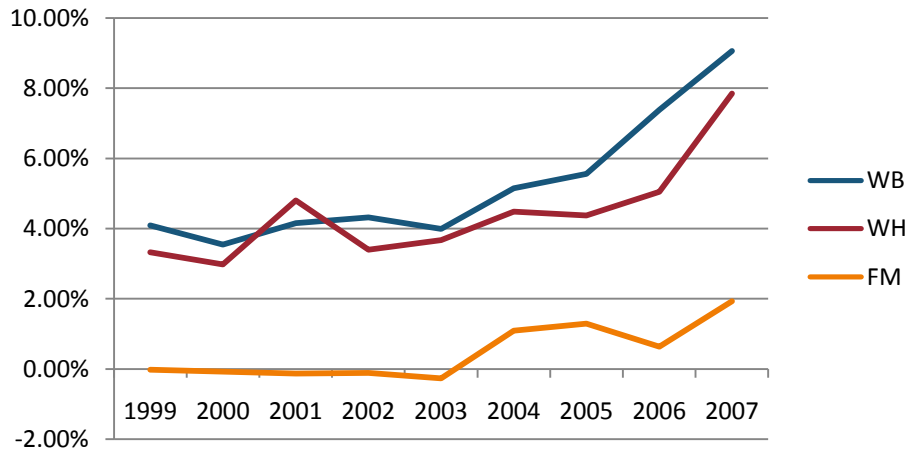
Gaps in the Percentage of Tests Taken Receiving a "5" on the AP Exam by Subgroup\*

	1997	1998	1999	2000	2001	2002	2003	2004	2005	2006	2007	2008
Male	12.24%	12.57%	11.39%	14.00%	12.03%	13.38%	13.66%	12.44%	13.76%	12.77%	11.71%	11.33%
Female	8.78%	7.30%	7.04%	5.40%	5.97%	7.69%	6.80%	8.22%	8.07%	7.65%	7.16%	7.64%
White	10.01%	9.77%	8.85%	9.65%	9.25%	10.77%	10.27%	10.52%	10.93%	9.64%	8.90%	9.16%
Black	0.00%	0.00%	0.00%	8.82%	0.00%	0.00%	4.08%	1.82%	2.60%	10.00%	8.41%	6.83%
Hispanic	0.00%	12.00%	11.54%	15.38%	10.00%	13.56%	12.50%	13.92%	12.21%	10.34%	9.24%	9.35%
M-F Gap	3.46%	5.27%	4.36%	8.60%	6.06%	5.70%	6.86%	4.22%	5.69%	5.12%	4.55%	3.69%
W-B Gap	10.01%	9.77%	8.85%	0.83%	9.25%	10.77%	6.19%	8.70%	8.33%	-0.36%	0.49%	2.32%
W-H Gap	10.01%	-2.23%	-2.69%	-5.73%	-0.75%	-2.79%	-2.23%	-3.40%	-1.29%	-0.71%	-0.34%	-0.19%

Gaps in the Percentage of Tests Taken Receiving a "5" on the AP Exam by Subgroup Weighted by Enrollment\*

	1999	2000	2001	2002	2003	2004	2005	2006	2007
Male	0.59%	0.76%	0.72%	0.88%	0.85%	0.87%	1.17%	1.38%	1.44%
Female	0.36%	0.29%	0.35%	0.50%	0.40%	0.67%	0.79%	0.87%	1.02%
White	0.44%	0.52%	0.55%	0.70%	0.64%	0.80%	0.99%	1.05%	1.19%
Black	0.00%	0.16%	0.00%	0.00%	0.09%	0.05%	0.09%	0.35%	0.36%
Hispanic	0.19%	0.37%	0.11%	0.42%	0.32%	0.44%	0.57%	0.60%	0.51%
M-F Gap	0.23%	0.47%	0.37%	0.38%	0.44%	0.21%	0.38%	0.50%	0.42%
W-B Gap	0.44%	0.36%	0.55%	0.70%	0.55%	0.76%	0.90%	0.70%	0.83%
W-H Gap	0.25%	0.15%	0.44%	0.28%	0.32%	0.36%	0.42%	0.45%	0.68%

**Gaps in the Number of Tests Taken Weighted by Subgroup Enrollment\***



\*The unit of analysis for AP data is the test, not the student. AP test results are presented as the number of scores received by members of each subgroup, NOT the number of students who received a given score on any exam. These numbers are not equivalent because some students take multiple tests.