

# Montana

While there is limited NAEP proficiency level and percentile data available, results from state assessments demonstrate the existence of Excellence Gaps for Hispanic and Free and Reduced Lunch Eligible students. White students had higher average AP scores and were more likely to make a “5” on an AP exam than African-American students. White students were also more likely to take an AP exam than African-American or Hispanic students.

According to NAEP proficiency data, the percentage of students at the advanced level increased for non-FARM and white students in Math, with additional improvements among FARM students in Grade 4 (both subjects). Gaps for FARM students increased in Math but declined in Reading in part due to declining non-FARM students’ scores.

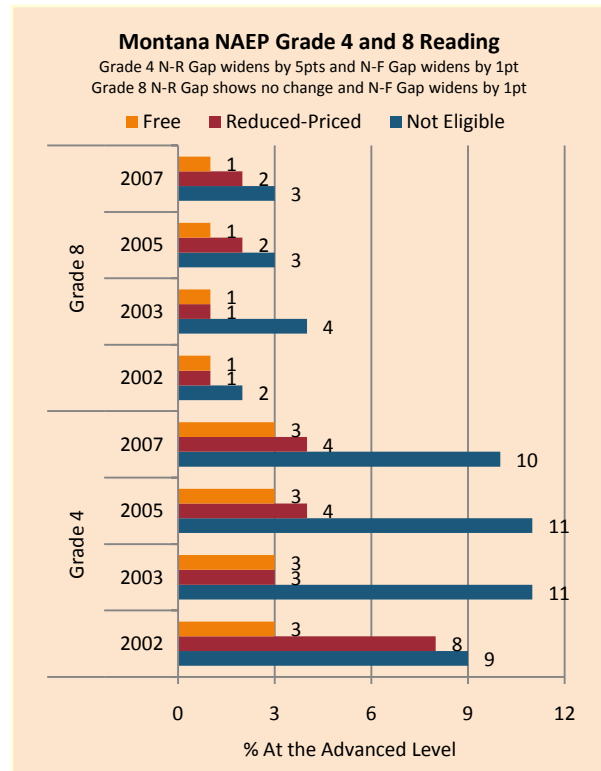
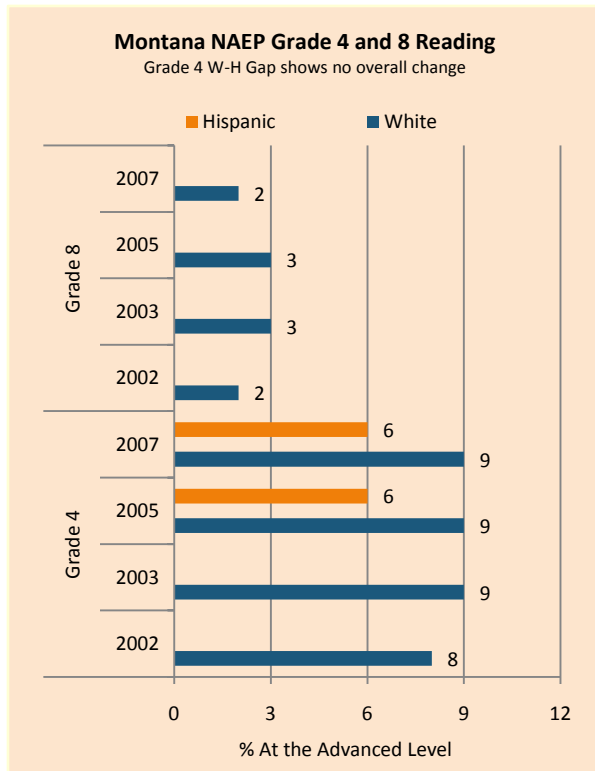
NAEP scale scores at the 90<sup>th</sup> percentile increased for all subgroups in Math Grade 4, with major gains made by Hispanic students. Scores generally declined in Reading Grade 8, while gains by FARM students and declines by non-FARM students in Grade 4 Reading resulted in lower achievement gaps. White students improved more quickly than African-American students in Math Grade 4, as did FARM students in relation to non-FARM students in both grades in Math.

The proportion of students performing at the advanced level on state assessments increased on Grade 7 on both Math and Reading, Grade 4 Math, and Grade 10 Reading assessments across ethnic and income groups, and for all but minority students in Grade 4 Reading. Performance declined across groups in Grade 10 Math. The Excellence Gap expanded in Grade 4 and 7 and was stable in Grade 10.

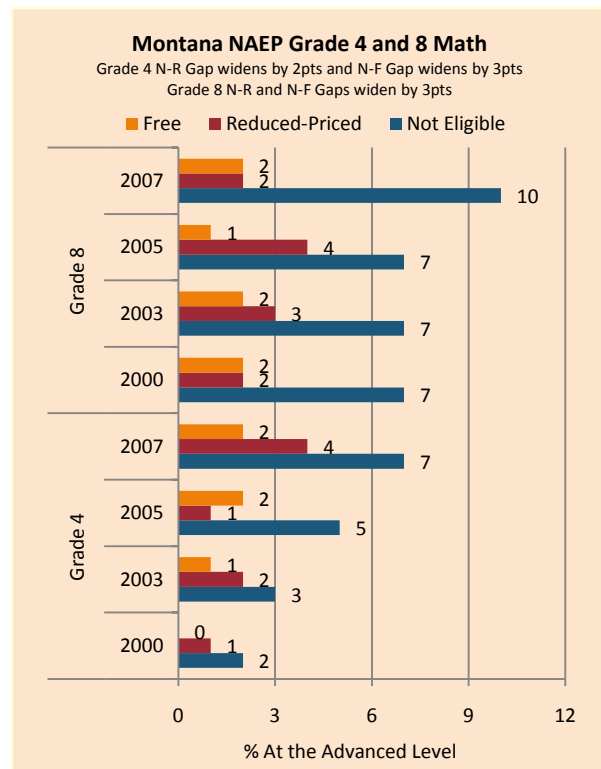
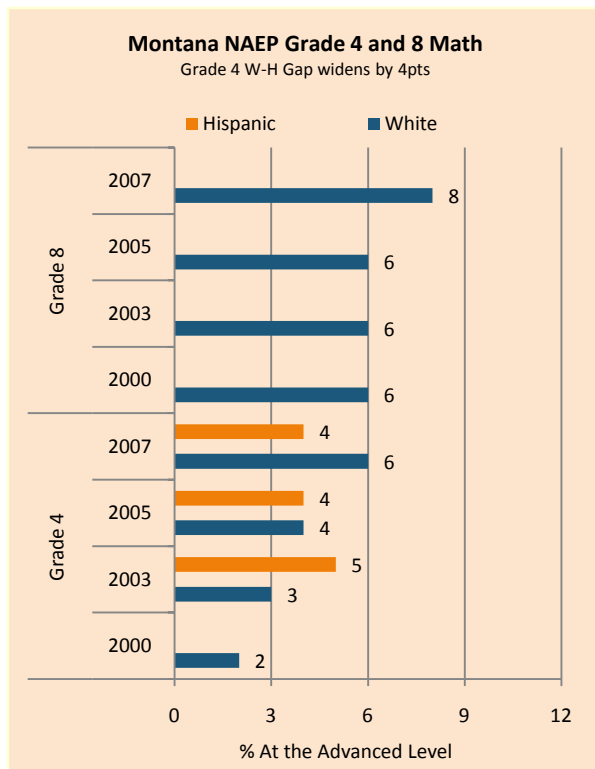
On AP exams, there was an increase in the gap between white and African-American students in mean AP scores and the number of exams taken. There were decreases in achievement gaps in the percentage of tests that scored a 5, with a slight decrease in the gap between white and Hispanic students in the number of exams taken weighted by enrollment.

**Summary of State Policy as of 2006-2007**

State	Mandate Identify	Mandate Services	Gifted Identified	Identified by Gender	Identified by Ethnicity	GT Funding	GT Funding per Identified
Montana	yes	yes	8,686	yes	no	\$150,000	\$17.27



NAEP Scores at the 90 <sup>th</sup> Percentile				
Subject, Grade, Group	2003	2007	2003 Gap	2007 Gap
Math 4 Male	269	276	4	4
Math 4 Female	265	272		
Math 8 Male	325	329	0	2
Math 8 Female	325	326		
Reading 4 Male	259	263	10	3
Reading 4 Female	269	266		
Reading 8 Male	301	299	13	11
Reading 8 Female	314	311		
Math 4 ELL	237	243	31	32
Math 4 NonELL	267	275		
Math 8 ELL		279		50
Math 8 NonELL	325	328		
Reading 4 ELL	223	236	42	29
Reading 4 NonELL	265	265		
Reading 8 ELL		276		30
Reading 8 NonELL	309	306		
Math 4 FARM	259	266	12	13
Math 4 NonFARM	271	278		



Math 8 FARM	314	313	14	19
Math 8 NonFARM	328	333		
Reading 4 FARM	250	255	20	14
Reading 4 NonFARM	270	268		
Reading 8 FARM	298	296	14	13
Reading 8 NonFARM	311	309		
Math 4 White	270	276		
Math 4 Black	247	251	22	25
Math 4 Hispanic	253	266	17	11
Math 8 White	326	329		
Math 8 Black				
Math 8 Hispanic				
Reading 4 White	266	266		
Reading 4 Black				
Reading 4 Hispanic		258		7
Reading 8 White	310	306		
Reading 8 Black				
Reading 8 Hispanic				

Montana Criterion-Referenced Test Grade 4, 7, 10 English/Language Arts Excellence Achievement Gaps on Race															
% At or Above Advanced Level	Grade 4					Grade 7					Grade 10				
	W	B	H	W-B	W-H	W	B	H	W-B	W-H	W	B	H	W-B	W-H
2005	33	24	26	9	7						34	19	20	15	14
2006	37	22	23	15	14	34	33	23	1	11	32	22	23	10	9
2007	36	22	22	14	14	42	24	29	18	13	38	26	23	12	15
2008	37	23	24	14	13	48	34	32	14	16	38	22	23	16	15

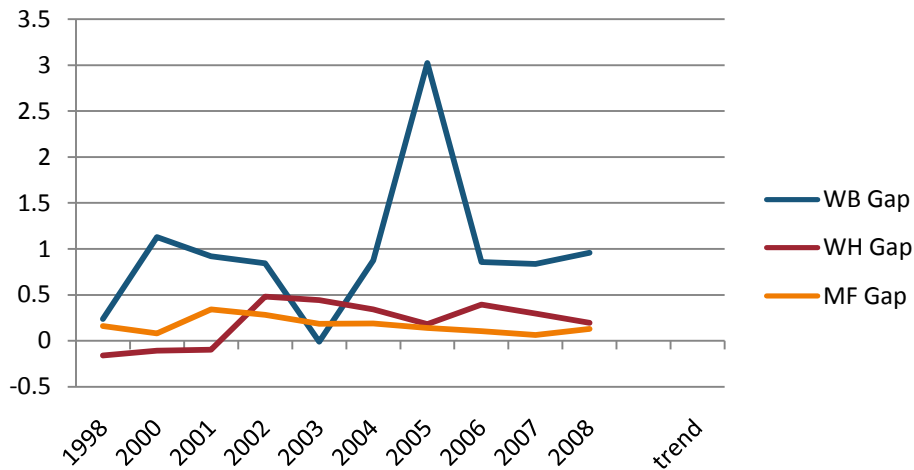
Montana Criterion-Referenced Test Grade 4, 7, 10 Mathematics Excellence Achievement Gaps on Race															
% At or Above Advanced Level	Grade 4					Grade 7					Grade 10				
	W	B	H	W-B	W-H	W	B	H	W-B	W-H	W	B	H	W-B	W-H
2005	20	8	14	12	6						23	12	14	9	9
2006	28	17	20	11	8	26	16	15	10	11	26	11	16	15	10
2007	28	18	17	10	11	29	20	15	9	14	23	13	13	10	10
2008	29	13	18	16	11	32	21	20	11	12	20	7	13	13	7

Montana Criterion-Referenced Test Grade 4, 7, 10 English/Language Arts Excellence Achievement Gaps on SES														
---	--	--	--	--	--	--	--	--	--	--	--	--	--	--

% At or Above Advanced Level	Grade 4			Grade 7			Grade 10		
	N	P	Gap	N	P	Gap	N	P	Gap
2005	37	20	17	39	20	19	36	17	19
2006	41	21	20	39	17	12	33	18	15
2007	41	20	21	47	24	17	40	23	17
2008	42	22	20	54	29	25	40	21	19

Montana Criterion-Referenced Test Grade 4, 7, 10 Mathematics Excellence Achievement Gaps on SES									
% At or Above Advanced Level	Grade 4			Grade 7			Grade 10		
	N	P	Gap	N	P	Gap	N	P	Gap
2005	22	11	11	20	8	12	25	11	14
2006	32	16	16	30	12	18	28	13	15
2007	33	15	18	33	15	18	25	11	14
2008	33	17	16	37	16	21	22	8	14

Gaps in Mean AP Scores



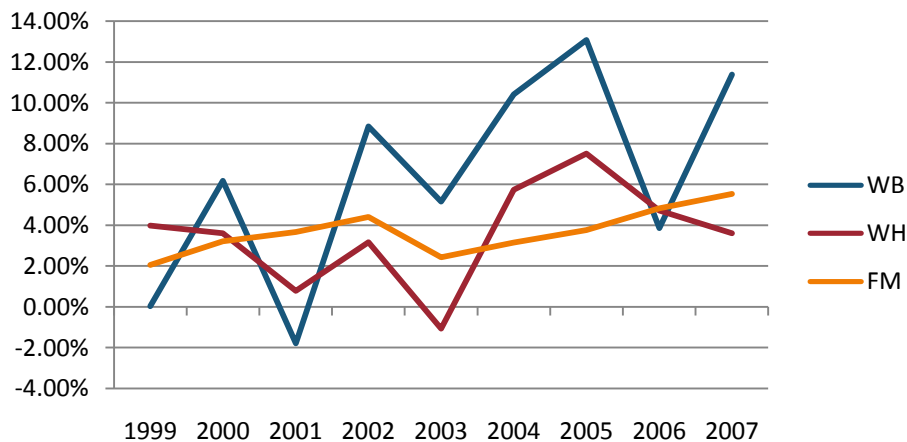
Gaps in the Percentage of Tests Taken Receiving a "5" on the AP Exam by Subgroup\*

	1997	1998	1999	2000	2001	2002	2003	2004	2005	2006	2007	2008
Male	15.46%	14.68%		12.77%	15.60%	13.77%	16.89%	17.41%	12.42%	13.33%	11.12%	11.79%

Female	13.43%	10.73%	11.51%	7.31%	10.39%	10.56%	13.22%	9.36%	11.86%	9.38%	9.43%
White	13.85%	11.92%	11.98%	10.61%	12.09%	13.93%	15.34%	11.11%	12.53%	10.25%	10.59%
Black	0.00%	16.67%	0.00%	0.00%	0.00%	0.00%	0.00%	0.00%	0.00%	0.00%	0.00%
Hispanic	33.33%	7.69%	19.05%	14.71%	3.03%	6.52%	12.90%	6.25%	6.52%	5.97%	11.76%
M-F Gap	2.03%	3.95%	1.26%	8.29%	3.38%	6.34%	4.18%	3.07%	1.47%	1.74%	2.36%
W-B Gap	13.85%	-4.74%	11.98%	10.61%	12.09%	13.93%	15.34%	11.11%	12.53%	10.25%	10.59%
W-H Gap	-19.49%	4.23%	-7.07%	-4.09%	9.06%	7.41%	2.44%	4.86%	6.00%	4.28%	-1.17%

Gaps in the Percentage of Tests Taken Receiving a "5" on the AP Exam by Subgroup Weighted by Enrollment*										
	1999	2000	2001	2002	2003	2004	2005	2006	2007	
Male	0.99%	1.02%	1.30%	1.33%	1.78%	2.03%	1.55%	1.64%	1.55%	
Female	0.95%	1.29%	0.88%	1.46%	1.37%	1.96%	1.52%	2.03%	1.83%	
White	0.91%	1.19%	1.10%	1.46%	1.65%	2.07%	1.66%	1.86%	1.75%	
Black	1.27%	0.00%	0.00%	0.00%	0.00%	0.00%	0.00%	0.00%	0.00%	
Hispanic	0.28%	1.21%	1.40%	0.27%	0.84%	1.00%	0.47%	0.66%	0.80%	
M-F Gap		-0.27%	0.42%	-0.13%	0.41%	0.07%	0.03%	-0.39%	-0.28%	
W-B Gap		1.19%	1.10%	1.46%	1.65%	2.07%	1.66%	1.86%	1.75%	
W-H Gap		-0.02%	-0.31%	1.19%	0.81%	1.07%	1.20%	1.20%	0.95%	

Gaps in the Number of Tests Taken Weighted by Subgroup Enrollment\*



\*The unit of analysis for AP data is the test, not the student. AP test results are presented as the number of scores received by members of each subgroup, NOT the number of students who received a given score on any exam. These numbers are not equivalent because some students take multiple tests.

