

Mississippi

NAEP proficiency level and percentile data demonstrate the existence of substantial Excellence Gaps for African-American and Free and Reduced Lunch Eligible Students. White students had higher average AP scores than African-American students on AP tests and were more likely to make a “5” on an AP exam or take an AP exam while Hispanic students’ performances were more competitive.

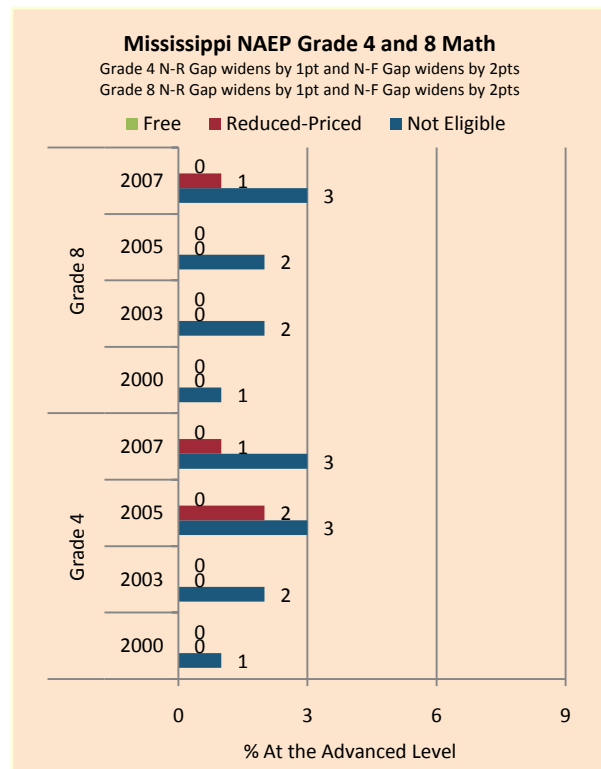
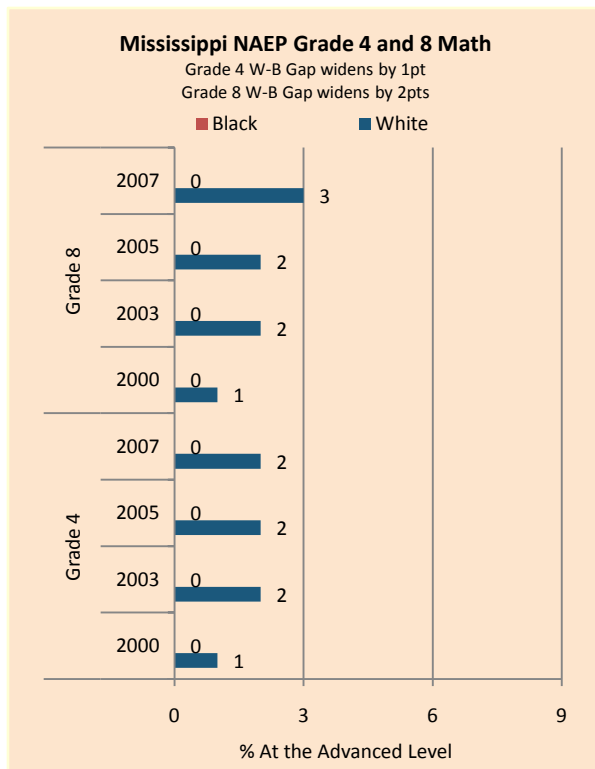
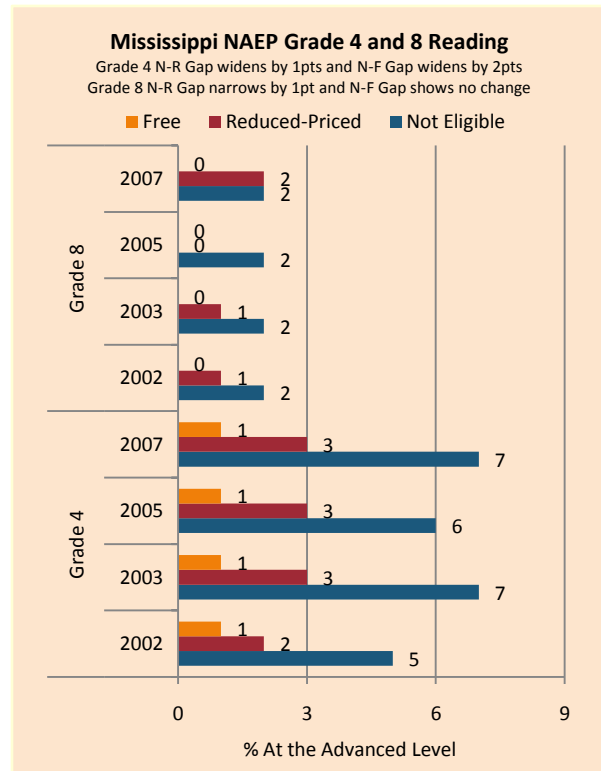
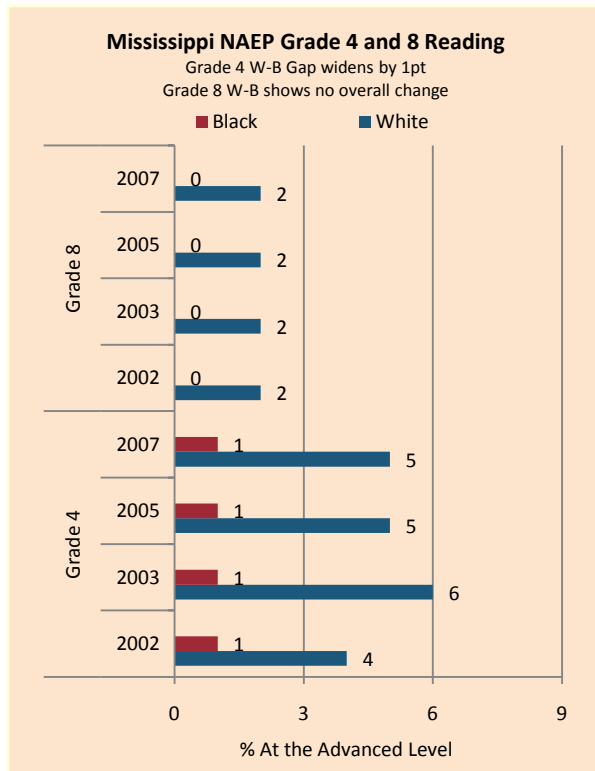
According to NAEP proficiency data, the percentage of students at the advanced level increased for non-FARM students in Math in both grades and for white students in Math Grade 8, in each of these cases resulting in an increase in the Excellence Gap. Performance was otherwise quite stable.

NAEP scale scores at the 90th percentile increased for most groups in Math but generally declined in Reading. The Excellence Gap expanded for FARM students in Grade 8 Math but shrank on other assessments, while achievement gaps increased for African-American students in Math Grade 8 but were otherwise stable.

On AP exams, there were modest increases in achievement gaps in mean exam scores, as well as an increase in the gap between white and Hispanic students in the percentage of exams earning a 5. Although the gap widened between white and African-American students in the number of tests taken weighted by enrollment, the gap for Hispanic students declined.

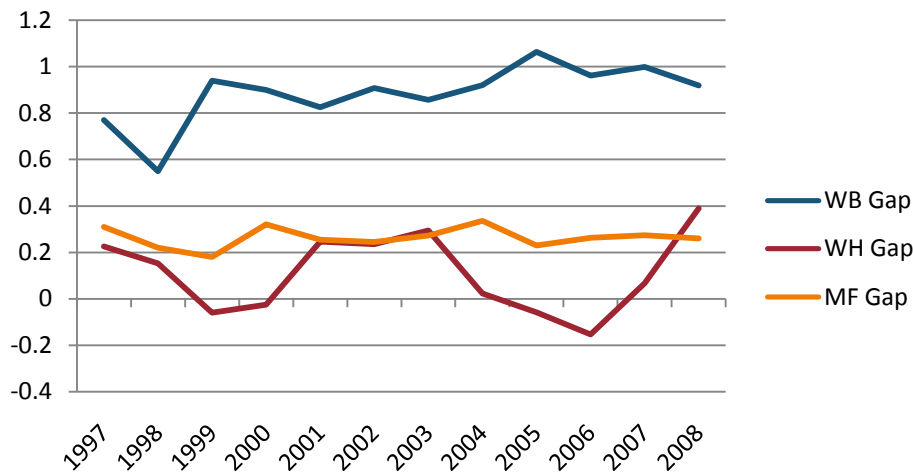
Summary of State Policy as of 2006-2007

State	Mandate Identify	Mandate Services	Gifted Identified	Identified by Gender	Identified by Ethnicity	GT Funding	GT Funding per Identified
Mississippi	yes	yes	31,658	no	no	\$39,859,329	\$1,259.06



NAEP Scores at the 90 th Percentile				
Subject, Grade, Group	2003	2007	2003 Gap	2007 Gap
Math 4 Male	258	261	1	2
Math 4 Female	257	260		
Math 8 Male	305	309	5	7
Math 8 Female	300	302		
Reading 4 Male	249	246	3	8
Reading 4 Female	252	254		
Reading 8 Male	289	288	11	7
Reading 8 Female	300	295		
Math 4 ELL				
Math 4 NonELL	258	261		
Math 8 ELL				
Math 8 NonELL	303	305		
Reading 4 ELL				
Reading 4 NonELL	250	250		
Reading 8 ELL				
Reading 8 NonELL	295	292		
Math 4 FARM	248	253	19	17
Math 4 NonFARM	268	270		
Math 8 FARM	286	294	26	24
Math 8 NonFARM	312	318		
Reading 4 FARM	239	241	24	21
Reading 4 NonFARM	263	262		
Reading 8 FARM	284	281	21	23
Reading 8 NonFARM	306	304		
Math 4 White	279	283		
Math 4 Black	257	256	22	27
Math 4 Hispanic	255	263	24	20
Math 8 White	312	316		
Math 8 Black	281	286	30	30
Math 8 Hispanic				
Reading 4 White	260	259		
Reading 4 Black	235	234	25	25
Reading 4 Hispanic				
Reading 8 White	304	301		
Reading 8 Black	280	277	24	25
Reading 8 Hispanic				

Gaps in Mean AP Scores



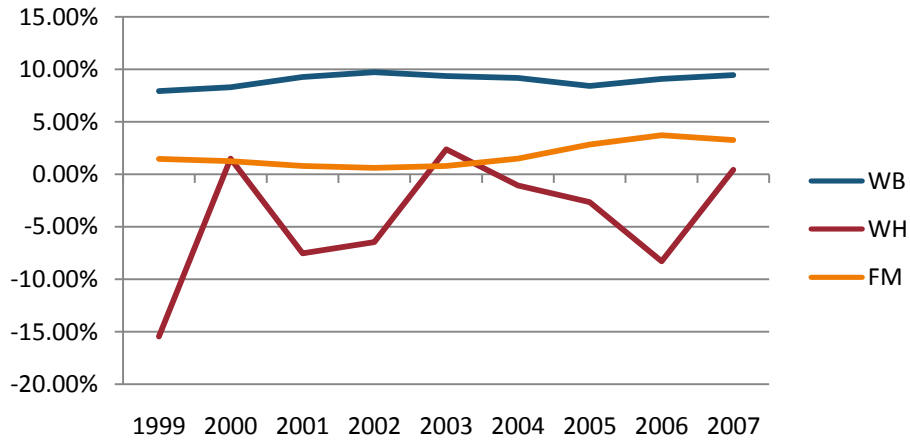
Gaps in the Percentage of Tests Taken Receiving a "5" on the AP Exam by Subgroup*

	1997	1998	1999	2000	2001	2002	2003	2004	2005	2006	2007	2008
Male	8.38%	8.67%	7.15%	10.48%	8.01%	10.34%	9.71%	10.59%	7.23%	6.61%	7.75%	6.58%
Female	4.76%	4.48%	4.48%	4.13%	4.31%	5.07%	4.15%	4.84%	4.00%	3.75%	3.70%	3.19%
White	6.85%	6.40%	6.48%	7.54%	6.68%	8.06%	6.97%	8.00%	6.58%	5.96%	6.70%	5.65%
Black	1.10%	1.19%	0.66%	1.07%	1.69%	1.63%	0.96%	1.06%	0.21%	0.47%	0.45%	0.76%
Hispanic	9.09%	7.41%	4.44%	6.25%	2.00%	1.69%	3.33%	6.67%	13.24%	14.29%	6.45%	1.46%
M-F Gap	3.62%	4.19%	2.67%	6.36%	3.71%	5.27%	5.57%	5.75%	3.23%	2.86%	4.05%	3.39%
W-B Gap	5.75%	5.22%	5.81%	6.48%	5.00%	6.42%	6.01%	6.94%	6.37%	5.49%	6.25%	4.89%
W-H Gap	-2.24%	-1.00%	2.03%	1.29%	4.68%	6.36%	3.64%	1.33%	-6.66%	-8.32%	0.25%	4.19%

Gaps in the Percentage of Tests Taken Receiving a "5" on the AP Exam by Subgroup Weighted by Enrollment*

	1999	2000	2001	2002	2003	2004	2005	2006	2007
Male	0.50%	0.65%	0.57%	0.79%	0.71%	0.83%	0.67%	0.70%	0.88%
Female	0.38%	0.31%	0.34%	0.42%	0.34%	0.45%	0.48%	0.54%	0.54%
White	0.69%	0.78%	0.77%	0.97%	0.82%	1.00%	0.92%	0.96%	1.12%
Black	0.02%	0.02%	0.04%	0.04%	0.02%	0.03%	0.01%	0.03%	0.03%
Hispanic	1.16%	0.56%	0.38%	0.31%	0.31%	0.90%	2.21%	3.48%	1.05%
M-F Gap	0.12%	0.34%	0.23%	0.37%	0.38%	0.38%	0.19%	0.16%	0.34%
W-B Gap	0.68%	0.76%	0.73%	0.94%	0.80%	0.96%	0.91%	0.92%	1.09%
W-H Gap	-0.47%	0.23%	0.39%	0.66%	0.51%	0.10%	-1.28%	-2.52%	0.07%

Gaps in the Number of Tests Taken Weighted by Subgroup Enrollment*



*The unit of analysis for AP data is the test, not the student. AP test results are presented as the number of scores received by members of each subgroup, NOT the number of students who received a given score on any exam. These numbers are not equivalent because some students take multiple tests.