

# Kansas

NAEP proficiency level and percentile data as well as results from state assessments demonstrate the existence of substantial Excellence Gaps for African-American, Hispanic, and Free and Reduced Lunch Eligible students. White students had higher average AP scores than African-American and Hispanic students on AP tests and were more likely to make a “5” on an AP exam or take an AP exam.

According to NAEP proficiency data, the percentage of students at the advanced level increased in Math for white and non-FARM students in both grades, for FARM and Hispanic students in Grade 4, and African-American students in Grade 8. Only African-Americans registered improvements in Grade 4 Reading, while there were declines among non-FARM, white, and Hispanic students in Grade 8. Excellence Gap expanded in Math for FARM and Hispanic students in both grades and African-American students in Grade 4, while declines in achievement gaps in Grade 8 Reading were largely due to declines among white and non-FARM students.

NAEP scale scores at the 90<sup>th</sup> percentile increased in Math for all but Hispanic students in Grade 8, less consistent improvements in Reading Grade 4, and decline among most groups in Reading Grade 8. Although underperforming groups improved more quickly than white and non-FARM students in Math Grade 4, the Excellence Gap expanded for Hispanic and FARM students. African-American students made consistently greater gains than other subgroups.

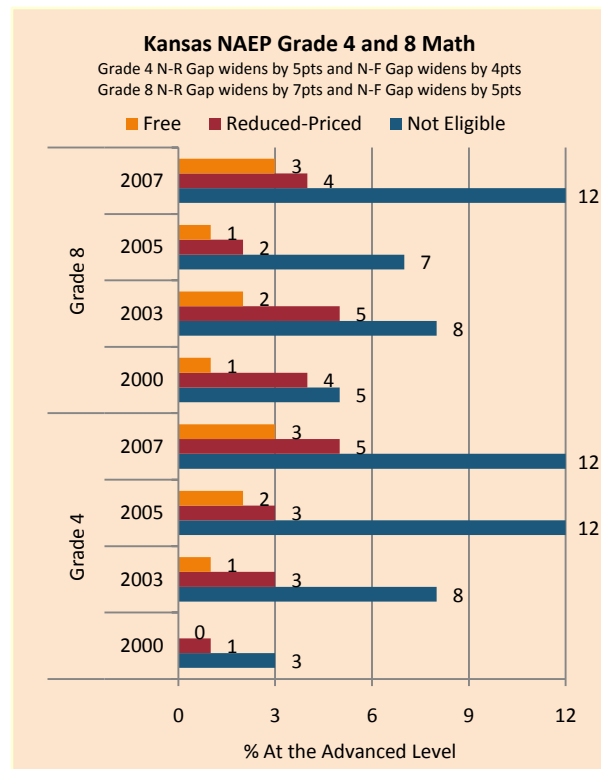
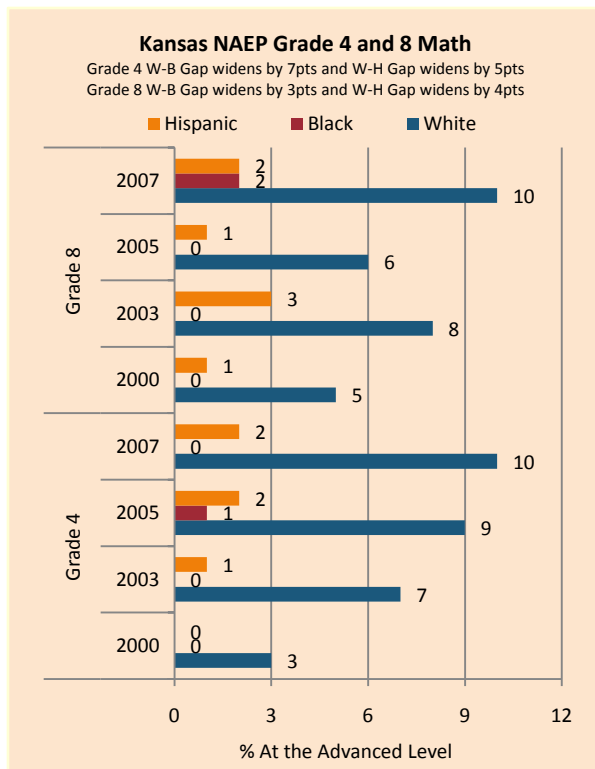
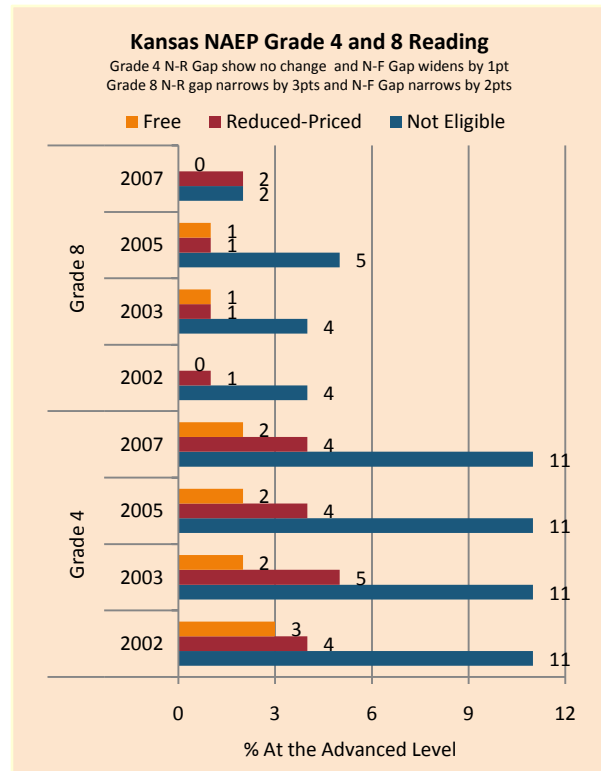
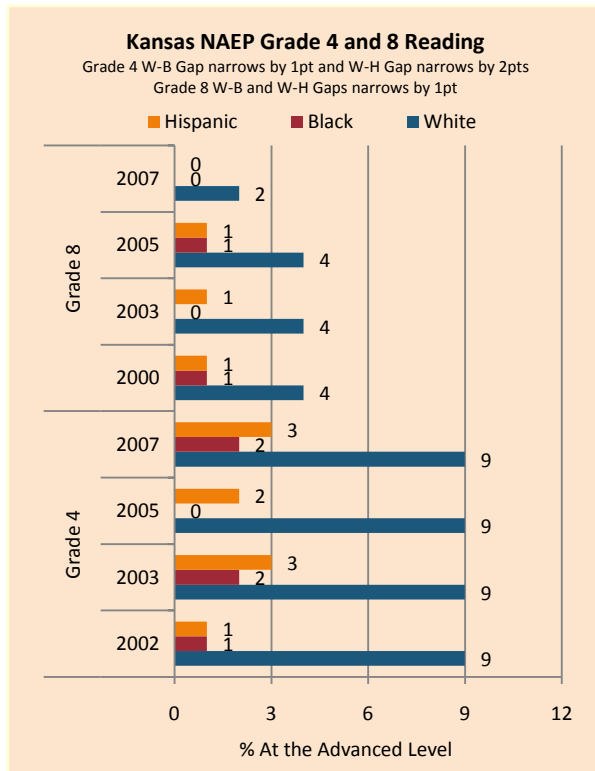
There was an increase in the proportion of students scoring at the highest level on state assessments in both Reading and Math across ethnic and income subgroups. Over-represented populations increased their performance at a faster rate in Grade 4 and 7 in both subjects and in Grade 10 Reading. In Grade 10 Math the Excellence Gap expanded for African-American students but Hispanic and lower-income students kept pace.

On the AP exams, there was a decrease in the gap between white and African-American students in mean AP scores and the percentage scoring 5 on the exam; but there was an increase in the gap between white and Hispanic students by these metrics as well as the percentage of tests taken which received a 5 on the exam weighted by enrollment. The gap in the number of tests taken weighted by enrollment increased for both groups.

**Summary of State Policy as of 2006-2007**

State	Mandate Identify	Mandate Services	Gifted Identified	Identified by Gender	Identified by Ethnicity	GT Funding	GT Funding Per Identified
Kansas	yes	yes	14,376	no	yes	\$11,846,869	\$824.07





NAEP Scores at the 90 <sup>th</sup> Percentile				
Subject, Grade, Group	2003	2007	2003 Gap	2007 Gap
Math 4 Male	278	281	6	3
Math 4 Female	272	279		
Math 8 Male	327	333	3	4
Math 8 Female	324	328		
Reading 4 Male	260	262	7	5
Reading 4 Female	266	266		
Reading 8 Male	301	300	12	7
Reading 8 Female	312	307		
Math 4 ELL	256	261	19	20
Math 4 NonELL	275	281		
Math 8 ELL	298	295	28	36
Math 8 NonELL	326	331		
Reading 4 ELL	233	244	31	21
Reading 4 NonELL	264	265		
Reading 8 ELL		272		32
Reading 8 NonELL	308	304		
Math 4 FARM	263	270	17	15
Math 4 NonFARM	280	285		
Math 8 FARM	313	315	17	21
Math 8 NonFARM	330	336		
Reading 4 FARM	249	251	20	19
Reading 4 NonFARM	269	270		
Reading 8 FARM	296	292	16	15
Reading 8 NonFARM	311	307		
Math 4 White	271	275		
Math 4 Black	248	258	24	17
Math 4 Hispanic	253	265	18	10
Math 8 White	329	332		
Math 8 Black	293	307	35	25
Math 8 Hispanic	311	309	17	24
Reading 4 White	266	266		
Reading 4 Black	242	247	24	19
Reading 4 Hispanic	250	250	16	16
Reading 8 White	310	306		
Reading 8 Black	282	283	28	22
Reading 8 Hispanic	293	289	16	16

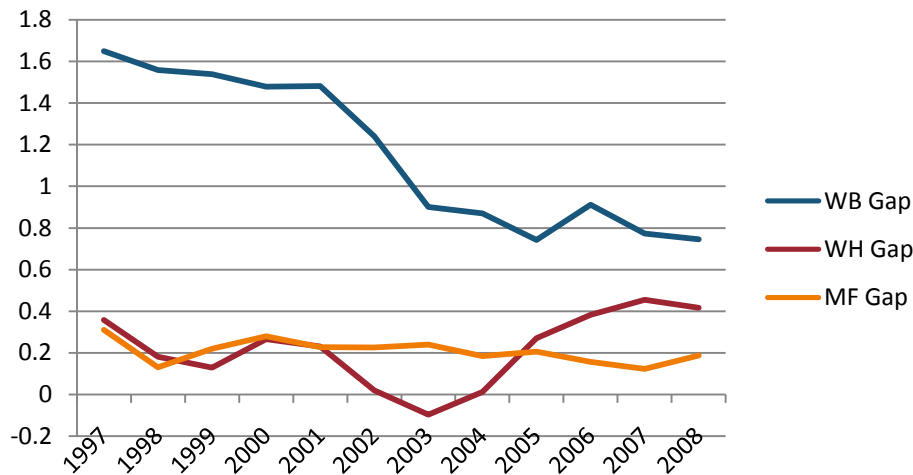
Kansas General Assessments Grade 5, 8, 11 in Reading Excellence Achievement Gaps on Race															
% At the Advanced Level	Grade 5					Grade 8					Grade 11				
	W	B	H	W-B	W-H	W	B	H	W-B	W-H	W	B	H	W-B	W-H
2003	21.2	6.9	9	14.3	12.2	12	3.5	6.7	8.5	5.3	13.2	3.1	8.1	10.1	5.1
2004	23.7	9.5	9.6	14.2	14.1	13.5	4.7	8.3	8.8	5.2	14.3	3.8	6	10.5	8.3
2005	27	12.5	15.3	14.5	11.7	14.8	5.1	9.4	9.7	5.4	13.4	3.8	8.4	9.6	5
2006	34.6	13.6	12.6	21	22	28.2	7.8	8.7	20.4	19.5	27.3	8.7	8.6	18.6	18.7
2007	39	15.2	15.8	23.8	23.2	31.4	8.8	10	22.6	21.4	25.8	7.2	8.3	18.6	17.5
2008	38.7	16.6	17.5	22.1	21.2	35.7	10.9	11.5	24.8	24.2	26.1	8.1	8.3	18	17.8

Kansas General Assessments Grade 4, 7, 10 in Mathematics Excellence Achievement Gaps on Race															
% At the Advanced Level	Grade 4					Grade 7					Grade 10 (Grade 11 in 2007-2008)				
	W	B	H	W-B	W-H	W	B	H	W-B	W-H	W	B	H	W-B	W-H
2003	26.5	8.4	10	18.1	16.5	19.7	3.4	4	16.3	15.7	16.6	2.3	3.3	14.3	13.3
2004	34.5	14.2	17	20.3	17.5	22.7	5.6	6.9	17.1	15.8	19.8	2.7	4.3	17.1	15.5
2005	42.3	18.4	21.8	23.9	20.2	25.6	6.7	8.4	18.9	17.2	20.5	3.9	4.5	16.6	16
2006	28.1	9.3	11.5	19.8	16.6	21.1	5.9	7.7	15.2	13.4	17.1	2.9	3.6	14.3	13.5
2007	34.8	11.4	16.1	23.4	18.7	25.3	6.3	8.3	19	17	18.2	3.7	4.4	14.5	13.8
2008	36	13.9	17.3	22.1	18.7	28.5	9.3	10.5	19.2	18	17.9	4.6	5.6	13.3	12.3

Kansas General Assessments Grade 5, 8, 11 Reading Excellence Achievement Gaps on SES									
% At the Advanced Level	Grade 5			Grade 8			Grade 11		
	N	P	Gap	N	P	Gap	N	P	Gap
2003	23.4	10.3	13.1	13.7	5.7	8.0	15.6	6.6	9.0
2004	25.9	12.0	13.9	15.3	6.7	8.6	16.7	6.6	10.1
2005	29.4	15.6	13.8	16.8	7.3	9.5	15.7	7.1	8.6
2006	37.3	17.2	20.1	31.5	11.7	19.8	31.3	12.1	19.2
2007	41.9	20.2	21.7	34.7	13.0	21.7	29.7	10.8	18.9
2008	41.0	21.9	19.1	39.2	15.4	23.8	29.8	11.4	18.4

Kansas General Assessments Grade 4, 7, 10 Mathematics Excellence Achievement Gaps on SES									
% At the Advanced Level	Grade 4			Grade 7			Grade 10, Grade 11 (07-08)		
	N	P	Gap	N	P	Gap	N	P	Gap
2003	29.1	12.9	16.2	23.6	6.6	17.0	19.8	5.4	14.4
2004	36.5	20.2	16.3	25.7	9.2	16.5	23.7	6.4	17.3
2005	45.0	25.3	19.7	28.7	11.2	17.5	23.7	7.7	16.0
2006	30.5	14.1	16.5	23.9	8.8	15.1	18.1	5.6	12.5
2007	35.3	17	18.3	27.7	9.6	18.1	21.3	6.9	14.4
2008	38.6	19.5	19.1	32.1	12.5	19.6	21.2	7	14.2

Gaps in Mean AP Scores

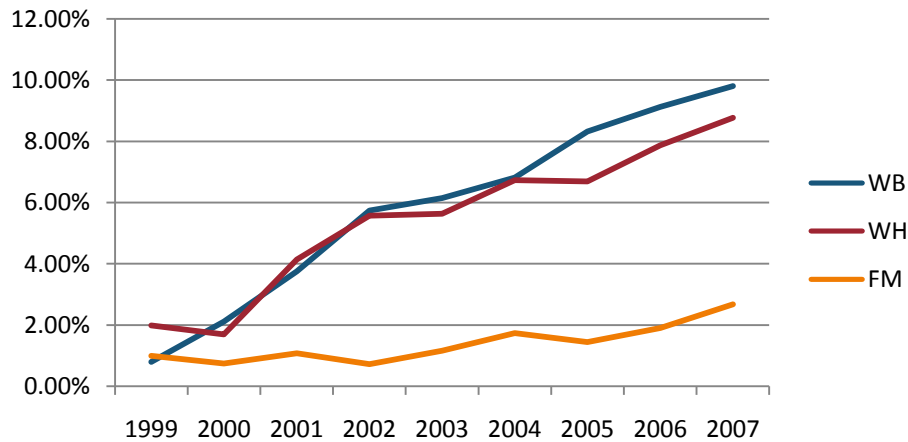


Gaps in the Percentage of Tests Taken Receiving a "5" on the AP Exam by Subgroup\*

	1997	1998	1999	2000	2001	2002	2003	2004	2005	2006	2007	2008
Male	16.52%	13.05%	14.77%	18.20%	17.17%	16.35%	16.55%	15.45%	14.61%	13.91%	13.39%	13.78%
Female	8.97%	10.17%	10.73%	11.93%	11.65%	11.62%	11.32%	11.93%	11.01%	11.39%	10.46%	9.73%
White	12.39%	11.42%	13.02%	15.57%	14.04%	13.43%	13.04%	13.15%	12.50%	12.33%	11.68%	11.69%
Black	0.59%	0.60%	0.47%	2.90%	2.27%	2.24%	6.25%	6.47%	7.18%	3.69%	2.88%	4.14%
Hispanic	10.00%	17.09%	14.29%	11.86%	13.28%	19.69%	21.84%	14.47%	12.13%	8.56%	6.25%	7.02%
M-F Gap	7.55%	2.88%	4.05%	6.27%	5.52%	4.73%	5.23%	3.52%	3.60%	2.52%	2.93%	4.06%
W-B Gap	11.79%	10.81%	12.54%	12.67%	11.77%	11.19%	6.79%	6.68%	5.32%	8.64%	8.80%	7.54%
W-H Gap	2.39%	-5.68%	-1.27%	3.70%	0.76%	-6.25%	-8.80%	-1.32%	0.37%	3.77%	5.43%	4.66%

Gaps in the Percentage of Tests Taken Receiving a "5" on the AP Exam by Subgroup Weighted by Enrollment*									
	1999	2000	2001	2002	2003	2004	2005	2006	2007
Male	0.89%	1.27%	1.25%	1.33%	1.44%	1.44%	1.64%	1.75%	1.83%
Female	0.75%	0.92%	0.97%	1.03%	1.12%	1.32%	1.40%	1.65%	1.71%
White	0.75%	1.06%	1.06%	1.14%	1.21%	1.32%	1.48%	1.65%	1.76%
Black	0.02%	0.14%	0.09%	0.06%	0.19%	0.21%	0.25%	0.16%	0.15%
Hispanic	0.54%	0.61%	0.45%	0.57%	0.79%	0.48%	0.62%	0.47%	0.39%
M-F Gap	0.14%	0.35%	0.28%	0.30%	0.32%	0.12%	0.24%	0.10%	0.12%
W-B Gap	0.73%	0.93%	0.97%	1.08%	1.01%	1.11%	1.23%	1.50%	1.61%
W-H Gap	0.21%	0.45%	0.61%	0.57%	0.42%	0.84%	0.86%	1.18%	1.37%

Gaps in the Number of Tests Taken Weighted by Subgroup Enrollment\*



\*The unit of analysis for AP data is the test, not the student. AP test results are presented as the number of scores received by members of each subgroup, NOT the number of students who received a given score on any exam. These numbers are not equivalent because some students take multiple tests.