

Iowa

NAEP proficiency level and percentile data as well as results from state assessments demonstrate the existence of substantial Excellence Gaps for African-American, Hispanic, and Free and Reduced Lunch Eligible students. White students had higher average AP scores than African-American and Hispanic students on AP tests and were more likely to make a “5” on an AP exam or take an AP exam.

According to NAEP proficiency data, the percentage of students at the advanced level increased in Math for FARM, non-FARM, and white students in both grades. Hispanic students improved in Grade 4 and African-American students registered improvements in Reading (both grades) and Math Grade 8 to narrow the achievement gap. FARM students improved more slowly than other students in Math Grade 4, while white students widened the gap between themselves and African-American students in Math in Grade 4 and Hispanic students in Grade 8.

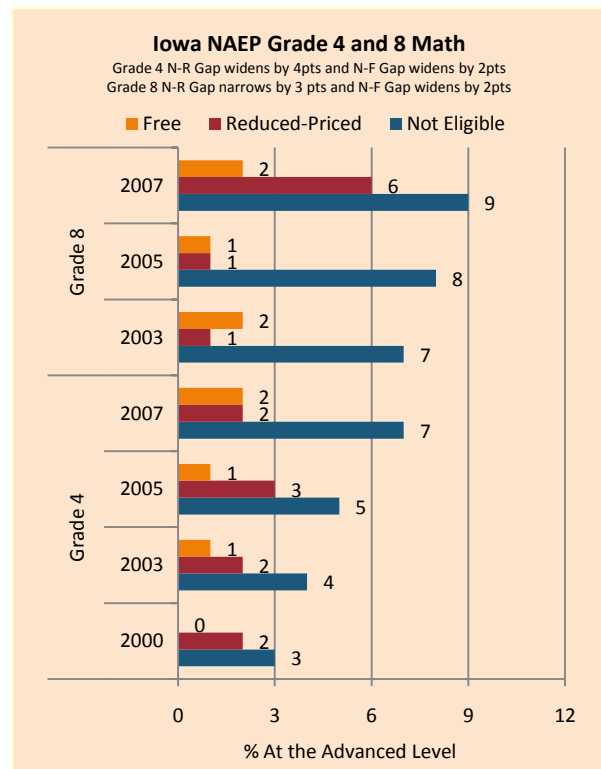
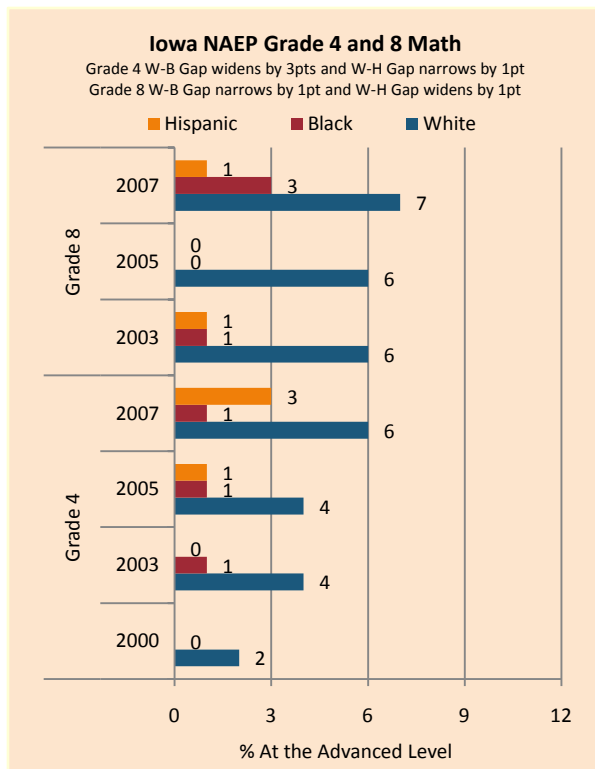
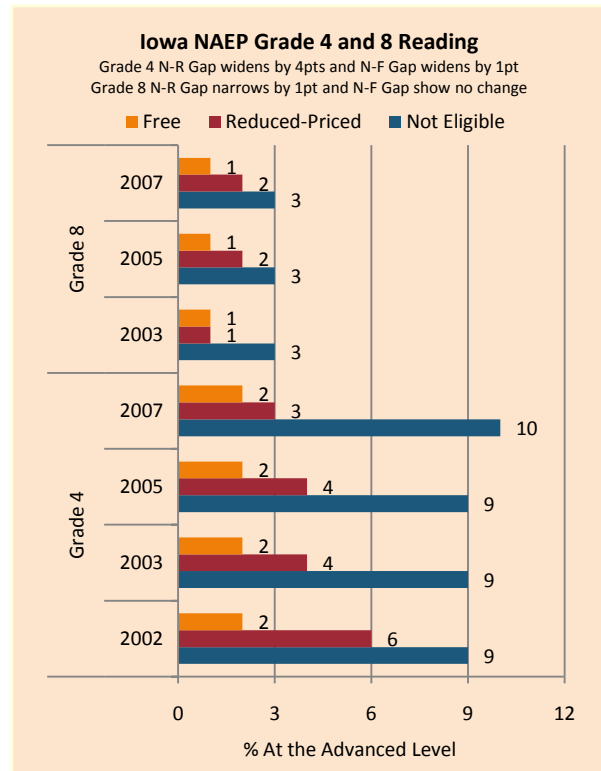
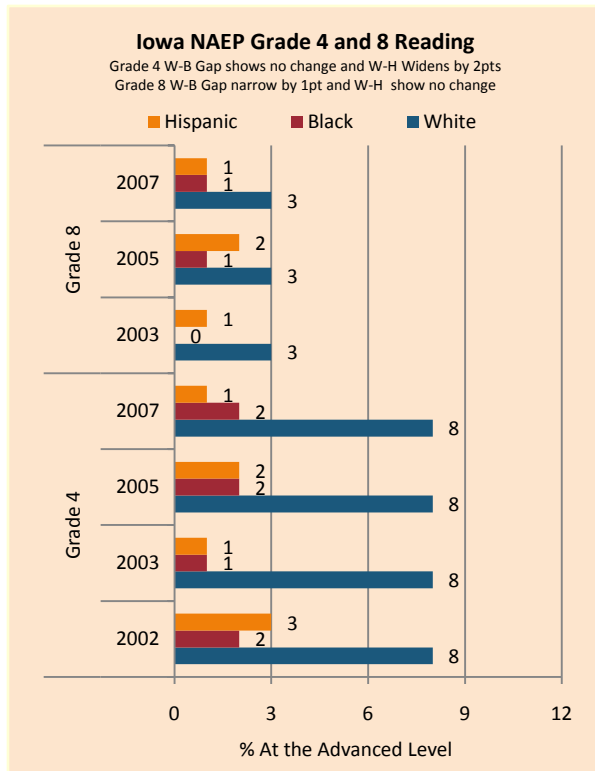
NAEP scale scores at the 90th percentile increased across subgroups in Math, with FARM and African-American students improving more rapidly than their peers in both grades and Hispanic students in Grade 8. White and non-FARM students’ performances were stagnant in Reading, with declines in the Excellence Gap accompanying modest improvements by Hispanic and FARM students but major gains by African-American students.

The percentage of white, Hispanic, and African-American students scoring at the highest level of achievement was quite stable. There was little change in the size of the achievement gap.

On the AP exam, there was an increase in the gap between white and African-American students for the percentage of tests taken which received a 5, as well as increases in achievement gaps as measured by the number of tests taken weighted by enrollment.

Summary of State Policy as of 2006-2007

State	Mandate Identify	Mandate Services	Gifted Identified	Identified by Gender	Identified by Ethnicity	GT Funding	GT Funding per Identified
Iowa	yes	yes	40,523	yes	yes	\$30,608,832	\$755.34



NAEP Scores at the 90 th Percentile				
Subject, Grade, Group	2003	2007	2003 Gap	2007 Gap
Math 4 Male	272	276	5	4
Math 4 Female	267	272		
Math 8 Male	326	330	3	5
Math 8 Female	323	325		
Reading 4 Male	260	260	7	6
Reading 4 Female	267	266		
Reading 8 Male	300	300	10	10
Reading 8 Female	310	311		
Math 4 ELL	245	256	26	19
Math 4 NonELL	270	275		
Math 8 ELL	298	292	27	36
Math 8 NonELL	325	328		
Reading 4 ELL	229	243	34	21
Reading 4 NonELL	264	264		
Reading 8 ELL				
Reading 8 NonELL	306	306		
Math 4 FARM	259	264	15	14
Math 4 NonFARM	274	278		
Math 8 FARM	306	314	21	17
Math 8 NonFARM	328	331		
Reading 4 FARM	249	250	18	17
Reading 4 NonFARM	267	267		
Reading 8 FARM	291	295	18	15
Reading 8 NonFARM	309	309		
Math 4 White	273	279		
Math 4 Black	245	255	27	24
Math 4 Hispanic	261	263	11	16
Math 8 White	326	328		
Math 8 Black	300	307	25	21
Math 8 Hispanic	300	304	26	24
Reading 4 White	264	264		
Reading 4 Black	235	245	29	19
Reading 4 Hispanic	247	246	17	18
Reading 8 White	307	307		
Reading 8 Black	282	292	25	15
Reading 8 Hispanic	286	289	21	18

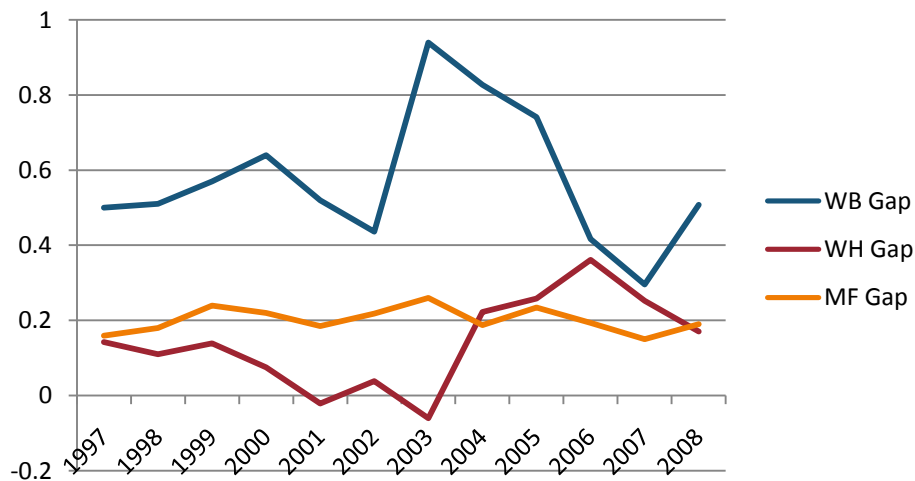
IA Test of Basic Skills and Tests of Educational Development Grade 4, 7/8, 11 English/Language Arts Excellence Achievement Gaps on Race

% At or Above Advanced Level	Grade 4					Grade 7 (Grade 8 prior to 2007)					Grade 11				
	W	B	H	W-B	W-H	W	B	H	W-B	W-H	W	B	H	W-B	W-H
2003-2005	22	6	7	16	15	16	4	5	12	11	20	6	6	14	14
2004-2006	22	8	6	14	16	17	4	5	13	12	20	6	6	14	14
2005-2007	23	8	7	15	16	17	4	5	13	12	20	5	6	15	14
2007-2008	20	6	6	14	14	15	4	4	11	11	19	6	6	13	13

IA Test of Basic Skills and Tests of Educational Development Grade 4, 7/8, 11 Mathematics Excellence Achievement Gaps on Race

% At or Above Advanced Level	Grade 4					Grade 7 (Grade 8 prior to 2007)					Grade 11				
	W	B	H	W-B	W-H	W	B	H	W-B	W-H	W	B	H	W-B	W-H
2003-2005	23	6	7	17	16	19	3	4	16	15	23	5	7	18	16
2004-2006	25	7	8	18	17	20	3	5	17	15	24	5	7	19	17
2005-2007	26	8	9	18	17	20	3	6	17	14	24	5	6	19	18
2007-2008	26	8	8	18	18	25	7	10	18	15	23	4	7	19	16

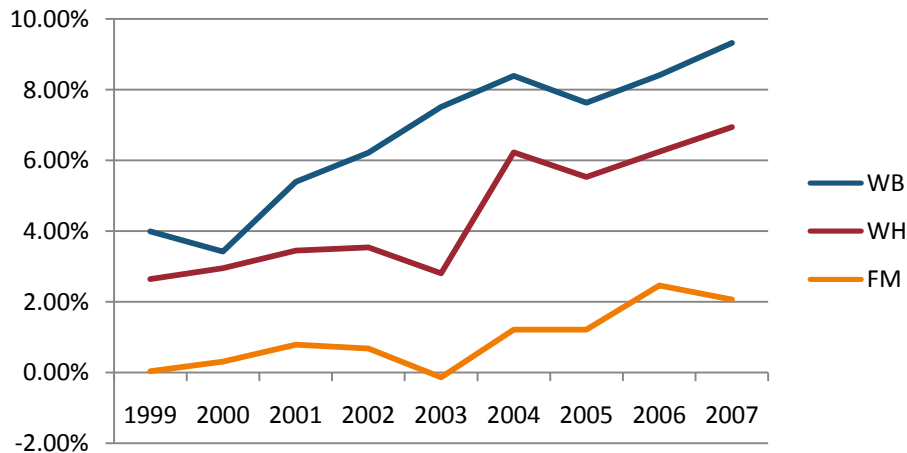
Gaps in Mean AP Scores



Gaps in the Percentage of Tests Taken Receiving a "5" on the AP Exam by Subgroup*												
	1997	1998	1999	2000	2001	2002	2003	2004	2005	2006	2007	2008
Male	15.25%	15.72%	18.34%	15.88%	15.77%	18.78%	17.74%	17.69%	16.95%	18.52%	18.38%	18.44%
Female	10.53%	10.35%	11.77%	10.58%	10.66%	12.04%	11.83%	13.33%	11.79%	13.12%	15.17%	14.27%
White	12.55%	12.33%	14.92%	13.11%	12.88%	14.85%	14.22%	14.73%	13.60%	14.80%	15.59%	15.46%
Black	2.56%	7.69%	2.44%	6.15%	7.89%	2.44%	0.00%	2.00%	5.21%	5.36%	11.57%	4.22%
Hispanic	10.53%	10.64%	8.33%	8.47%	11.94%	17.65%	19.15%	9.52%	8.97%	8.62%	10.24%	13.73%
M-F Gap	4.72%	5.37%	6.57%	5.31%	5.11%	6.75%	5.90%	4.36%	5.16%	5.40%	3.21%	4.16%
W-B Gap	9.98%	4.64%	12.48%	6.96%	4.99%	12.41%	14.22%	12.73%	8.39%	9.44%	4.02%	11.24%
W-H Gap	2.02%	1.70%	6.59%	4.64%	0.94%	-2.80%	-4.92%	5.21%	4.63%	6.18%	5.35%	1.72%

Gaps in the Percentage of Tests Taken Receiving a "5" on the AP Exam by Subgroup Weighted by Enrollment*									
	1999	2000	2001	2002	2003	2004	2005	2006	2007
Male	1.27%	1.16%	1.21%	1.58%	1.84%	1.86%	1.98%	2.20%	2.39%
Female	0.82%	0.81%	0.90%	1.10%	1.21%	1.57%	1.52%	1.88%	2.29%
White	0.93%	0.92%	0.97%	1.23%	1.40%	1.57%	1.57%	1.82%	2.07%
Black	0.05%	0.22%	0.17%	0.05%	0.00%	0.05%	0.20%	0.21%	0.46%
Hispanic	0.30%	0.34%	0.49%	0.83%	1.35%	0.42%	0.54%	0.52%	0.65%
M-F Gap	0.45%	0.36%	0.31%	0.49%	0.63%	0.30%	0.46%	0.32%	0.10%
W-B Gap	0.87%	0.70%	0.80%	1.18%	1.40%	1.52%	1.37%	1.61%	1.61%
W-H Gap	0.63%	0.57%	0.48%	0.39%	0.05%	1.15%	1.03%	1.30%	1.42%

Gaps in the Number of Tests Taken Weighted by Subgroup Enrollment*



*The unit of analysis for AP data is the test, not the student. AP test results are presented as the number of scores received by members of each subgroup, NOT the number of students who received a given score on any exam. These numbers are not equivalent because some students take multiple tests.