

Indiana

NAEP proficiency level and percentile data as well as results from state assessments demonstrate the existence of substantial Excellence Gaps for African-American, Hispanic, and Free and Reduced Lunch Eligible students in most subjects and grade levels. White students had higher average AP scores than African-American and Hispanic students on AP tests and were more likely to make a “5” on an AP exam or take an AP exam. Indiana state assessments have fairly rigorous standards for advanced status.

According to NAEP proficiency data, the percentage of students at the advanced level increased in Math for FARM, non-FARM, and white students in both grades, for African-American students in Grade 4, and Hispanic students in Grade 8, with white and non-FARM students improving more rapidly than other students. Although Reading Grade 8 performance was stable, there were declines for all but non-FARM students in Grade 4.

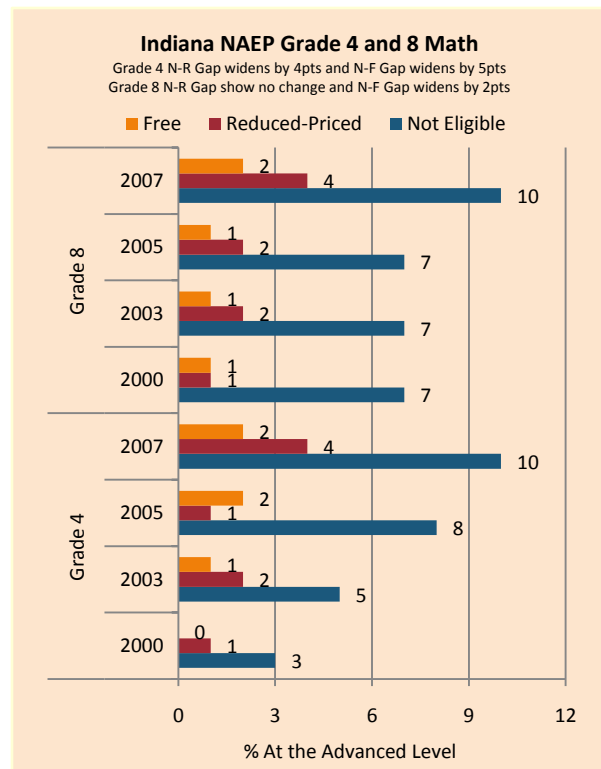
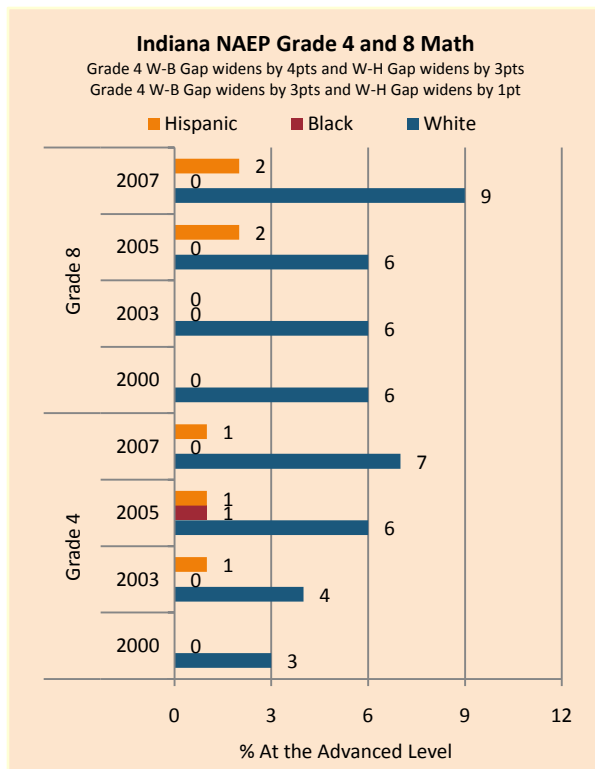
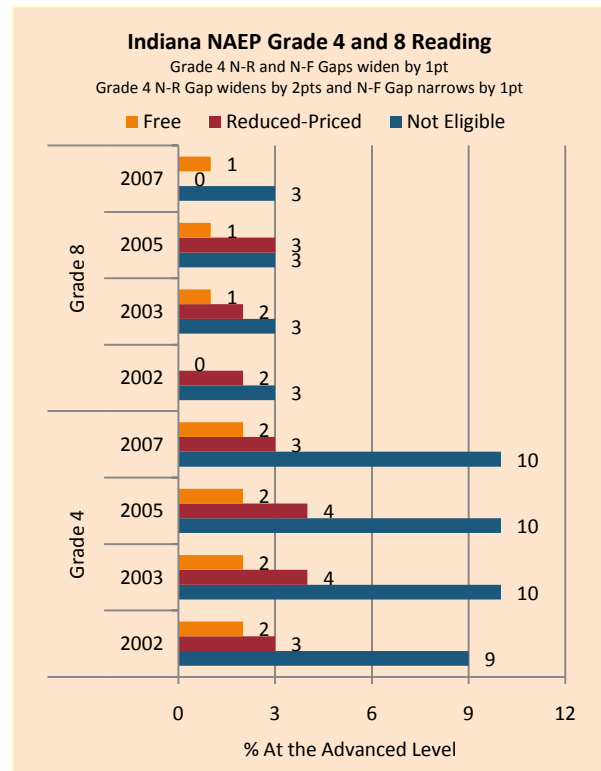
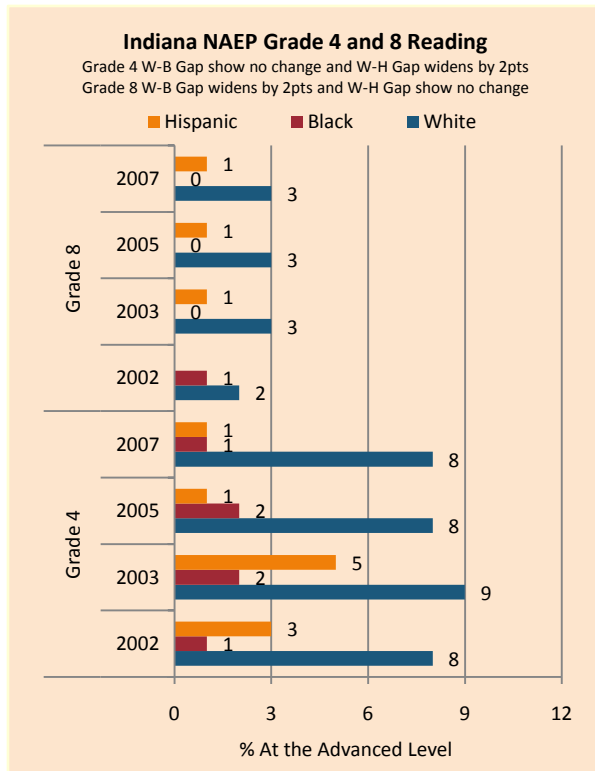
NAEP scale scores at the 90th percentile increased across subgroups in Math, with substantial gains by FARM students in Grade 4 and Hispanic students in Grade 8 (in Reading as well). The Excellence Gap in Math shrank in Grade 4 and between Hispanic and white students in Grade 8. In Reading, white and non-FARM students’ performances were relatively stable, with declines among FARM and Hispanic students in Grade 4 and African-American students in Grade 8. Hispanic students made gains in Grade 8, determining changes in the Excellence Gap.

The proportion of students scoring at the advanced level on state assessments was relatively stable across subjects and grade levels, with the exception of declines in Math Grade 10 that resulted in narrower achievement gaps.

There were modest increases in achievement gaps as measured by mean AP scores, the percentage of tests taken that received a 5, and the number of tests taken weighted by enrollment. There was also an increase in the gap between white and African-American students for the percentage of tests taken that scored a 5 weighted by enrollment.

Summary of State Policy as of 2006-2007

State	Mandate Identify	Mandate Services	Gifted Identified	Identified by Gender	Identified by Ethnicity	GT Funding	GT Funding per Identified
Indiana	no	no	106,263	yes	yes	\$5,836,340	\$54.92



NAEP Scores at the 90 th Percentile				
Subject, Grade, Group	2003	2007	2003 Gap	2007 Gap
Math 4 Male	272	278	2	3
Math 4 Female	269	275		
Math 8 Male	325	330	4	5
Math 8 Female	321	325		
Reading 4 Male	260	260	8	4
Reading 4 Female	268	264		
Reading 8 Male	299	299	9	9
Reading 8 Female	308	308		
Math 4 ELL	247	263	24	14
Math 4 NonELL	271	277		
Math 8 ELL		312		16
Math 8 NonELL	323	328		
Reading 4 ELL		237		26
Reading 4 NonELL	264	263		
Reading 8 ELL				
Reading 8 NonELL	304	304		
Math 4 FARM	256	266	18	16
Math 4 NonFARM	275	282		
Math 8 FARM	308	313	19	20
Math 8 NonFARM	327	333		
Reading 4 FARM	250	248	18	20
Reading 4 NonFARM	268	268		
Reading 8 FARM	288	289	20	20
Reading 8 NonFARM	308	309		
Math 4 White	278	279		
Math 4 Black	244	248	34	31
Math 4 Hispanic	253	259	24	20
Math 8 White	326	331		
Math 8 Black	294	298	32	33
Math 8 Hispanic	298	311	27	19
Reading 4 White	266	265		
Reading 4 Black	239	241	27	24
Reading 4 Hispanic	256	247	10	18
Reading 8 White	306	306		
Reading 8 Black	285	281	22	25
Reading 8 Hispanic	289	300	17	6

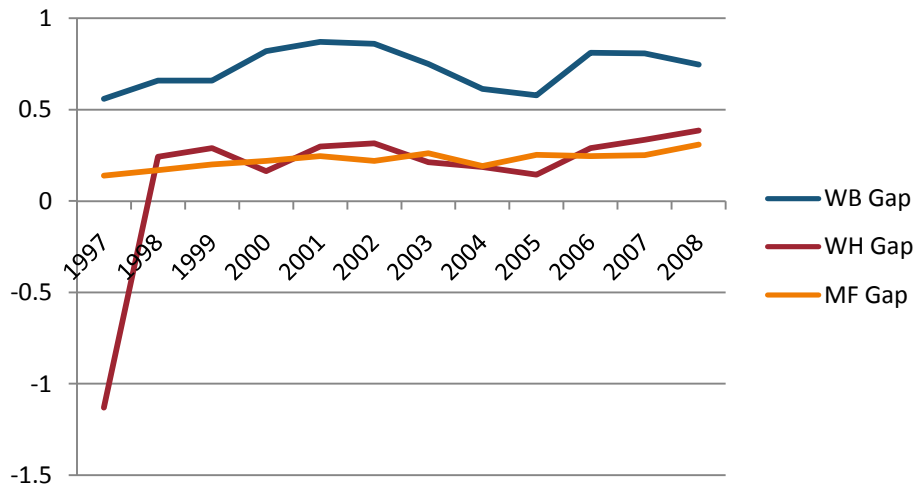
ISTEP+ Grade 4,7, GQE Grade 10 in Reading Excellence Achievement Gaps on Race															
% At the Pass+ Level	Grade 4					Grade 7					Grade 10				
	W	B	H	W-B	W-H	W	B	H	W-B	W-H	W	B	H	W-B	W-H
2004	12	3	4	9	8	10	2	4	8	6	3	0	1	3	2
2005	12	3	3	9	9	9	2	3	7	6	3	0	0	3	3
2006	11	3	3	8	8	10	2	3	8	7	3	0	0	3	3
2007	10	2	3	8	7	12	2	3	10	9	3	0	1	3	2
2008	12	3	3	9	9	11	2	3	9	8	3	0	1	3	2

ISTEP+ Grade 4, 7, GQE Grade 10 in Mathematics Excellence Achievement Gaps on Race															
% At the Pass+ Level	Grade 4					Grade 7					Grade 10				
	W	B	H	W-B	W-H	W	B	H	W-B	W-H	W	B	H	W-B	W-H
2004	14	4	7	10	7	18	3	6	15	12	13	1	3	12	10
2005	17	5	8	12	9	19	4	7	15	12	14	2	4	12	10
2006	16	5	6	11	10	22	4	9	18	13	14	2	4	12	10
2007	19	7	8	12	11	21	5	8	16	13	15	2	5	13	10
2008	17	6	8	11	9	21	5	9	16	12	9	1	3	8	6

ISTEP+ Grade 4, 7, GQE Grade 10 Reading Excellence Achievement Gaps on SES									
% At the Advanced Level	Grade 4			Grade 7			Grade 10		
	N	P	Gap	N	P	Gap	N	P	Gap
2004	15	4	11	12	3	9	4	1	3
2005	15	4	11	11	3	8	3	1	2
2006	14	4	10	12	3	9	4	1	3
2007	13	3	10	14	4	10	4	1	3
2008	15	4	11	14	4	10	4	1	3

ISTEP+ Grade 4, 7, GQE Grade 10 Mathematics Excellence Achievement Gaps on SES									
% At the Advanced Level	Grade 4			Grade 7			Grade 10		
	N	P	Gap	N	P	Gap	N	P	Gap
2004	17	6	11	21	6	15	15	3	12
2005	20	8	12	23	7	16	15	4	11
2006	19	7	12	26	8	18	16	4	12
2007	22	9	13	25	8	17	17	4	13
2008	20	8	12	25	8	17	11	2	9

Gaps in Mean AP Scores



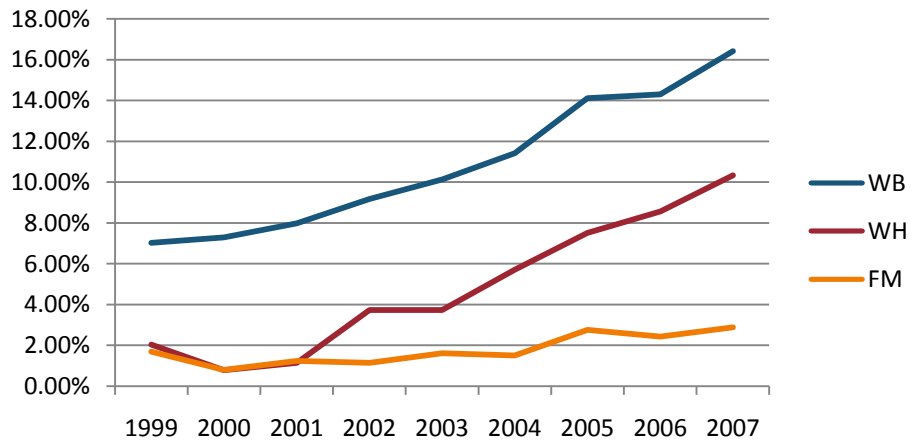
Gaps in the Percentage of Tests Taken Receiving a "5" on the AP Exam by Subgroup*

	1997	1998	1999	2000	2001	2002	2003	2004	2005	2006	2007	2008
Male	7.59%	9.72%	11.04%	11.71%	12.91%	14.17%	12.86%	12.80%	12.29%	13.29%	13.34%	14.12%
Female	5.38%	6.16%	6.83%	7.04%	8.00%	8.96%	7.60%	8.69%	7.38%	8.41%	8.41%	8.36%
White	6.14%	7.69%	8.36%	9.19%	10.00%	11.11%	9.73%	10.08%	9.10%	10.25%	10.18%	10.33%
Black	1.67%	1.50%	1.49%	1.56%	3.11%	2.75%	3.05%	3.59%	2.92%	1.28%	2.23%	2.34%
Hispanic	5.86%	5.74%	6.08%	8.82%	7.53%	8.33%	8.93%	10.83%	7.76%	7.72%	8.78%	7.65%
M-F Gap	2.21%	3.56%	4.22%	4.67%	4.91%	5.21%	5.26%	4.11%	4.91%	4.88%	4.93%	5.77%
W-B Gap	4.47%	6.19%	6.87%	7.63%	6.89%	8.36%	6.67%	6.48%	6.18%	8.97%	7.95%	7.99%
W-H Gap	0.28%	1.95%	2.27%	0.37%	2.48%	2.78%	0.80%	-0.75%	1.33%	2.54%	1.40%	2.68%

Gaps in the Percentage of Tests Taken Receiving a "5" on the AP Exam by Subgroup Weighted by Enrollment*

	1999	2000	2001	2002	2003	2004	2005	2006	2007
Male	1.11%	1.35%	1.54%	1.86%	1.90%	2.17%	2.46%	2.66%	2.90%
Female	0.80%	0.87%	1.05%	1.28%	1.25%	1.61%	1.68%	1.88%	2.07%
White	0.87%	1.07%	1.23%	1.50%	1.49%	1.76%	1.92%	2.13%	2.37%
Black	0.05%	0.07%	0.13%	0.12%	0.16%	0.22%	0.20%	0.08%	0.15%
Hispanic	0.51%	0.95%	0.84%	0.81%	1.04%	1.27%	1.06%	0.94%	1.13%
M-F Gap	0.31%	0.48%	0.48%	0.58%	0.65%	0.57%	0.78%	0.77%	0.83%
W-B Gap	0.82%	1.00%	1.09%	1.38%	1.33%	1.54%	1.72%	2.04%	2.21%
W-H Gap	0.36%	0.11%	0.39%	0.69%	0.46%	0.49%	0.87%	1.19%	1.23%

Gaps in the Number of Tests Taken Weighted by Subgroup Enrollment*



*The unit of analysis for AP data is the test, not the student. AP test results are presented as the number of scores received by members of each subgroup, NOT the number of students who received a given score on any exam. These numbers are not equivalent because some students take multiple tests.