

Arizona

NAEP proficiency level and percentile data as well as results from state assessments demonstrate the existence of substantial Excellence Gaps for African-American, Hispanic, and Free and Reduced Lunch Eligible students. White students had higher average AP scores than African-American and Hispanic students on AP tests and were more likely to make a “5” on an AP exam or take an AP exam.

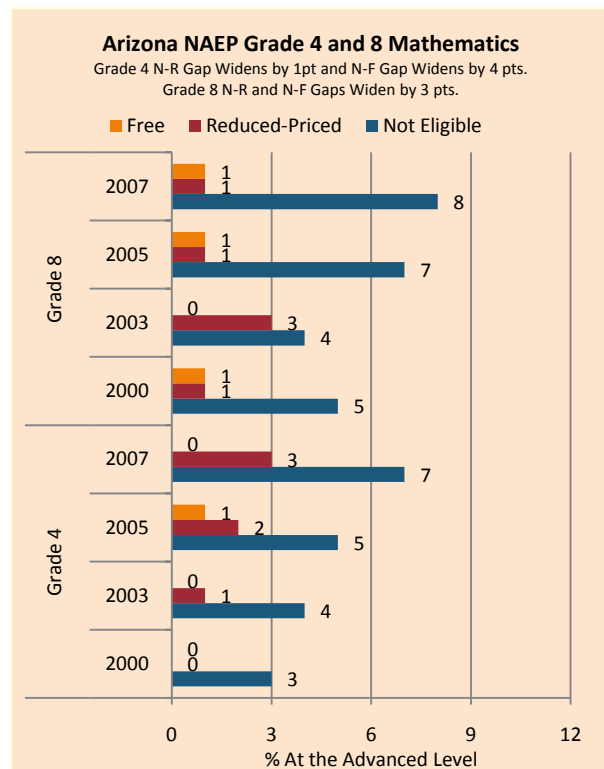
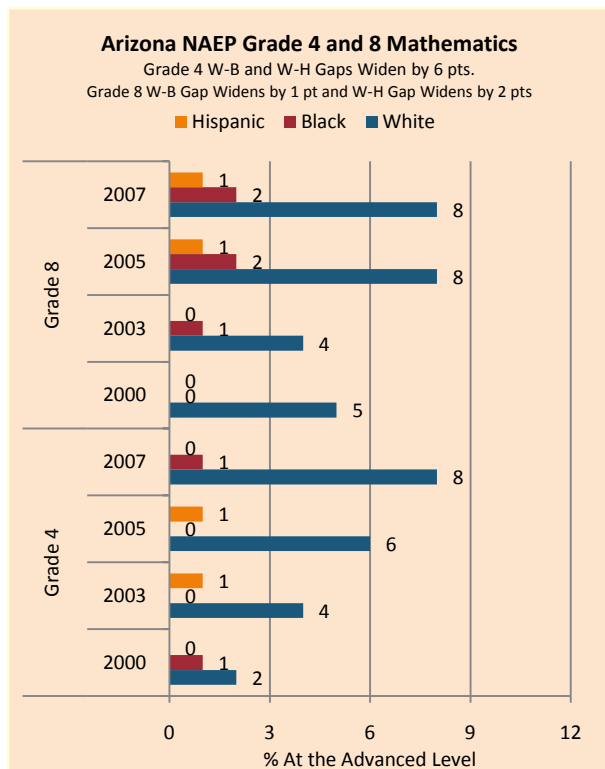
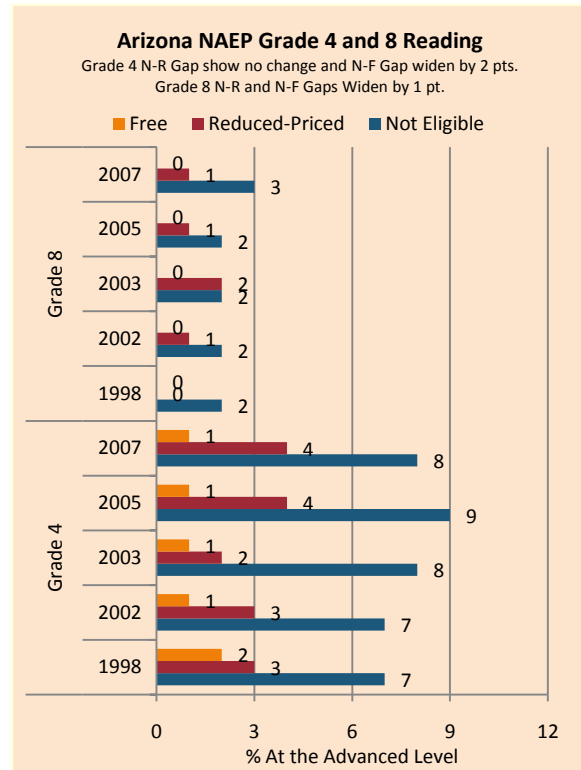
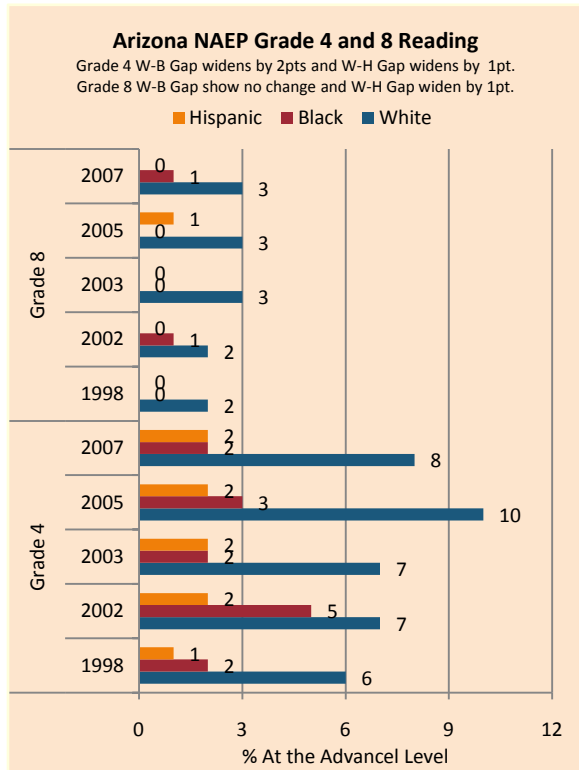
According to NAEP proficiency data, the percentage of students at the advanced level increased in Math for non-FARM, African-American, and white students in both grades, with Hispanic students improving in Grade 4 but declining in Grade 8 and FARM students stagnant. In Reading, African-American students improved in both grades, white students in Grade 4 and non-FARM students in Grade 8. The Excellence Gap expanded in Math, for Hispanic students in Reading Grade 4, and non-FARM students in Reading Grade 8, while it declined for African-American students in Grade 8 Reading.

NAEP scale scores at the 90th percentile increased across subgroups in Math in both grades, with an increase in the Excellence Gap in Grade 4 and a decline in the gap among African-American students in Grade 8 due to strong gains. Smaller achievement gaps in Reading Grade 4 were due in part to stagnation among white and non-FARM students, while in Reading Grade 8 non-FARM, African-American, and white students enjoyed modest improvements while FARM students stagnated and Hispanic students declined.

Excellence Gaps have remained quite stable in Arizona in Grades 4, 7, and 10 in both Reading and Math, with only slight changes among ethnic and income subgroups.

On AP exams, there was a decrease in the gap between white and minority students in percentage of tests taken receiving a 5. There was an increase in the gap between white and Hispanic students for the percentage of tests taken which received a 5 weighted by enrollment. There were also increases in the achievement gaps as measured by the number of tests taken weighted by enrollment.

Summary of State Policy							
State	Mandate Identify	Mandate Services	Gifted Identified 06-07	Identified by Gender	Identified by Ethnicity	GT Funding 2006-07	GT Funding per Identified
Arizona	yes	yes	75,121	yes	yes	\$3,192,500	\$42.50



NAEP Scores at the 90 th Percentile				
Subject, Grade, Group	2003	2007	2003 Gap	2007 Gap
Math 4 Male	267	271	3	4
Math 4 Female	263	267		
Math 8 Male	314	323	0	5
Math 8 Female	315	318		
Reading 4 Male	252	253	6	5
Reading 4 Female	258	258		
Reading 8 Male	295	296	8	6
Reading 8 Female	303	303		
Math 4 ELL	240	240	28	31
Math 4 NonELL	267	272		
Math 8 ELL	284	282	33	40
Math 8 NonELL	317	322		
Reading 4 ELL	222	218	37	40
Reading 4 NonELL	258	258		
Reading 8 ELL	262	259	40	42
Reading 8 NonELL	301	301		
Math 4 FARM	252	255	19	23
Math 4 NonFARM	271	277		
Math 8 FARM	298	303	23	25
Math 8 NonFARM	322	328		
Reading 4 FARM	240	243	24	20
Reading 4 NonFARM	264	263		
Reading 8 FARM	284	284	21	23
Reading 8 NonFARM	304	306		
Math 4 White	271	278		
Math 4 Black	252	256	20	23
Math 4 Hispanic	250	255	21	24
Math 8 White	323	329		
Math 8 Black	295	307	28	23
Math 8 Hispanic	296	303	26	26
Reading 4 White	263	263		
Reading 4 Black	242	249	21	14
Reading 4 Hispanic	242	243	21	20
Reading 8 White	306	308		
Reading 8 Black	291	294	15	14
Reading 8 Hispanic	284	282	22	25

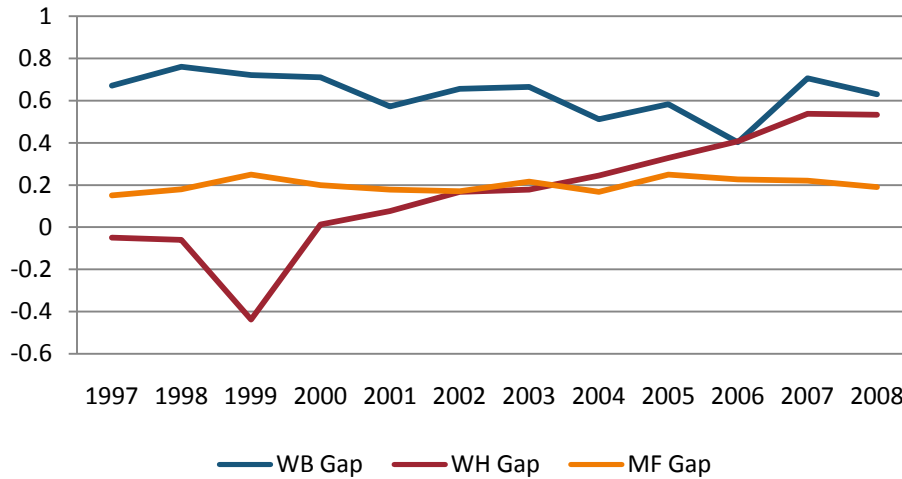
AZ AIMS-DPA Grade 4, 7 and AIMS-HS Grade 10 Reading Excellence Achievement Gaps on Race															
% At or Above Advanced Level	Grade 4					Grade 7					Grade 10				
	W	B	H	W-B	W-H	W	B	H	W-B	W-H	W	B	H	W-B	W-H
2003	Not Released in 2003 and 2004										15	4	4	11	11
2004	Not Released in 2003 and 2004										12	3	2	9	10
2005	16	5	4	11	12	12	4	3	8	9	13	4	3	9	10
2006	14	5	4	9	10	12	3	3	9	9	13	3	3	10	10
2007	16	5	5	11	11	14	5	4	9	10	11	3	3	8	8
2008	16	5	4	11	12	13	4	3	9	10	12	3	2	9	10

AZ AIMS-DPA Grade 4, 7 and AIMS-HS Grade 10 Mathematics Excellence Achievement Gaps on Race															
% At or Above Advanced Level	Grade 4					Grade 7					Grade 10				
	W	B	H	W-B	W-H	W	B	H	W-B	W-H	W	B	H	W-B	W-H
2003	Not Released in 2003 and 2004										20	6	6	14	14
2004	Not Released in 2003 and 2004										22	6	5	16	17
2005	31	11	12	20	19	20	6	6	14	14	25	8	8	17	17
2006	35	14	15	21	20	23	7	8	16	15	21	6	6	15	15
2007	40	17	18	23	22	27	9	10	18	17	20	5	6	15	14
2008	35	15	16	20	19	27	9	9	18	18	22	7	6	15	16

AZ AIMS-DPA Grade 4, 7 and AIMS-HS Grade 10 Reading Excellence Achievement Gaps on SES									
% At or Above Advanced Level	Grade 4			Grade 7			Grade 10		
	N	P	Gap	N	P	Gap	N	P	Gap
2007	16	4	12	14	3	11	9	2	7
2008	15	4	11	13	3	10	10	2	8

AZ AIMS-DPA Grade 4, 7 and AIMS-HS Grade 10 Mathematics Excellence Achievement Gaps on SES									
% At or Above Advanced Level	Grade 4			Grade 7			Grade 10		
	N	P	Gap	N	P	Gap	N	P	Gap
2007	38	16	22	27	8	19	17	5	12
2008	36	15	21	26	9	17	19	5	14

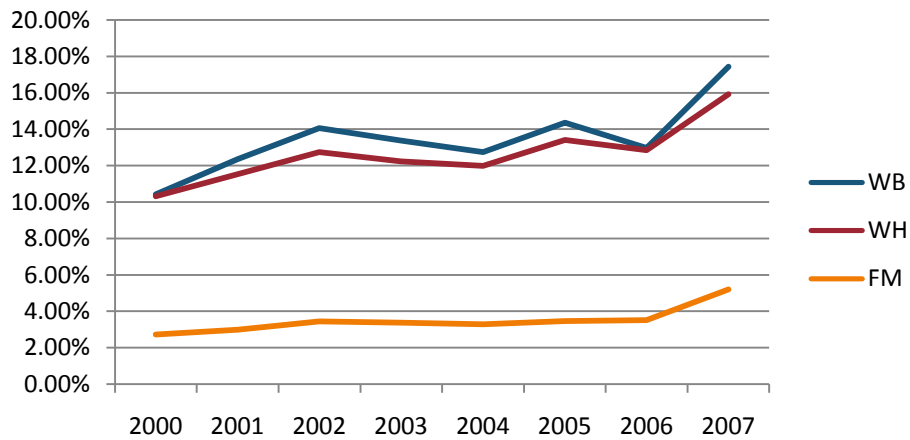
Gaps in Mean AP Scores



Gaps in the Percentage of Tests Taken Receiving a "5" on the AP Exam by Subgroup*												
	1997	1998	1999	2000	2001	2002	2003	2004	2005	2006	2007	2008
Male	14.22%	14.33%	10.47%	15.14%	14.08%	13.76%	14.78%	15.80%	14.91%	14.76%	13.30%	13.16%
Female	11.26%	10.33%	6.48%	11.21%	11.21%	10.42%	10.77%	12.15%	10.40%	9.98%	9.03%	9.91%
White	11.48%	10.88%	7.96%	12.58%	12.08%	12.15%	12.08%	13.54%	12.63%	12.21%	11.30%	11.95%
Black	0.83%	4.72%	0.96%	3.21%	5.15%	1.86%	1.95%	8.05%	5.94%	10.02%	3.61%	5.67%
Hispanic	19.85%	18.09%	21.57%	19.67%	17.27%	12.87%	17.31%	14.61%	9.84%	9.19%	7.57%	8.16%
M-F Gap	2.96%	4.00%	3.99%	3.93%	2.88%	3.34%	4.01%	3.65%	4.51%	4.78%	4.27%	3.25%
W-B Gap	10.65%	6.16%	7.00%	9.37%	6.92%	10.29%	10.13%	5.49%	6.68%	2.19%	7.69%	6.27%
W-H Gap	-8.37%	-7.20%	-13.61%	-7.09%	-5.19%	-0.72%	-5.23%	-1.07%	2.79%	3.02%	3.73%	3.78%

Gaps in the Percentage of Tests Taken Receiving a "5" on the AP Exam by Subgroup Weighted by Enrollment*									
	1999	2000	2001	2002	2003	2004	2005	2006	2007
Male		1.65%	1.72%	1.80%	1.88%	1.95%	2.10%	2.17%	2.49%
Female		1.53%	1.71%	1.72%	1.73%	1.90%	1.82%	1.82%	2.16%
White		1.87%	2.02%	2.23%	2.15%	2.39%	2.51%	2.47%	3.00%
Black		0.14%	0.22%	0.08%	0.09%	0.40%	0.33%	0.72%	0.33%
Hispanic		0.89%	0.89%	0.72%	0.97%	0.83%	0.64%	0.68%	0.80%
M-F Gap		0.12%	0.02%	0.08%	0.15%	0.05%	0.28%	0.35%	0.33%
W-B Gap		1.73%	1.79%	2.15%	2.07%	1.99%	2.18%	1.74%	2.67%
W-H Gap		0.98%	1.13%	1.51%	1.19%	1.56%	1.87%	1.79%	2.19%

**Gaps in the Number of Tests Taken Weighted by Subgroup
Enrollment***



*The unit of analysis for AP data is the test, not the student. AP test results are presented as the number of scores received by members of each subgroup, NOT the number of students who received a given score on any exam. These numbers are not equivalent because some students take multiple tests.